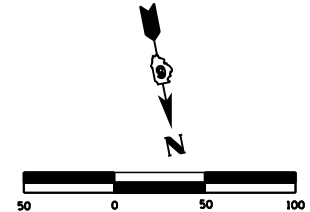


F.A.P. RTE.	SECTION	COUNTY	TOTAL SHEETS	SHEET NO.
310	69-3(3HB)	MORGAN	793	186
STA.		TO STA.		
FED. ROAD DIST. NO.		ILLINOIS	FED. AID PROJECT	

SEC 12, T 15 N, R 12 W, 3rd PM

SECTION LINE

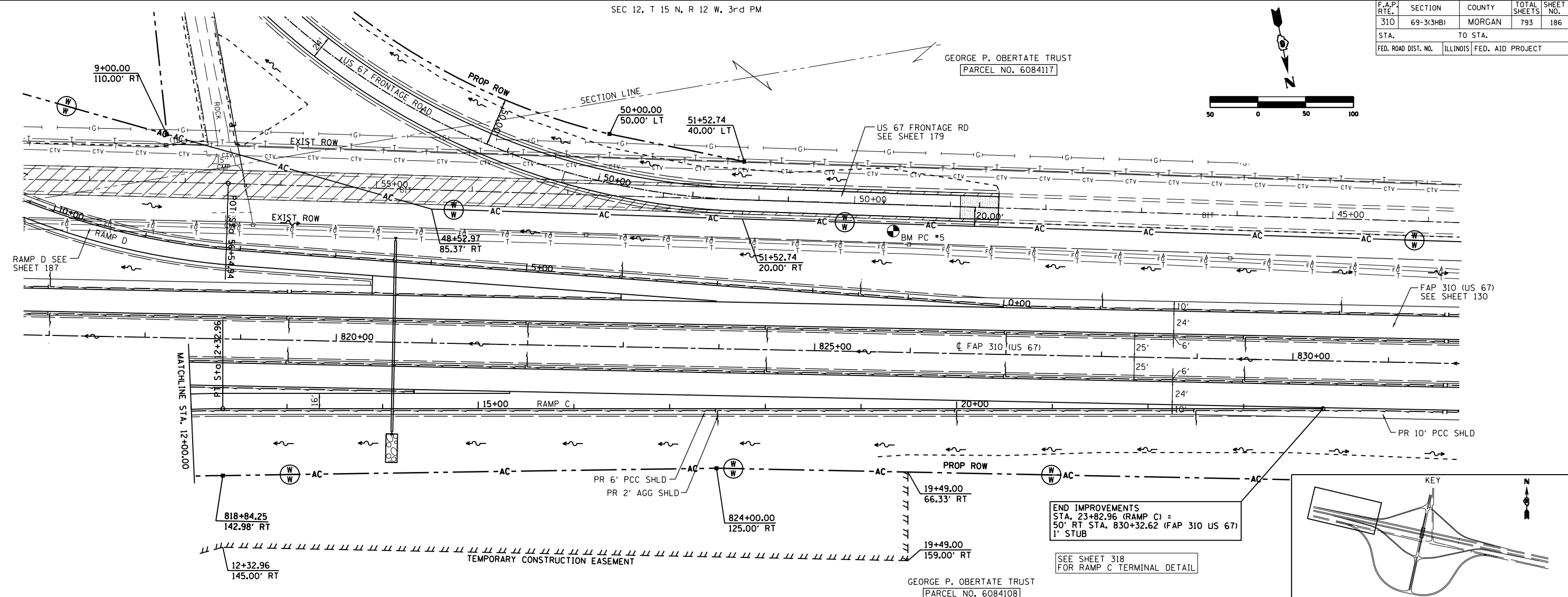
GEORGE P. OBERTATE TRUST
PARCEL NO. 6084117



1:18:26 PM

PLAN	DATE	BY
SURVEYED		
PLOTTED		
CHECKED		
NO. OF WAY CHECKED		
CADD FILE NAME		

PROFILE	DATE	BY
SURVEYED		
PLOTTED		
CHECKED		
NO. OF WAY CHECKED		
STRUCTURE NOTATIONS CHKD		



SEC 1, T 15 N, R 12 W, 3rd PM

GEORGE P. OBERTATE TRUST
PARCEL NO. 6084108

END IMPROVEMENTS
STA. 23+82.96 (RAMP C) =
50' RT STA. 830+32.62 (FAP 310 US 67)
1' STUB

SEE SHEET 318
FOR RAMP C TERMINAL DETAIL

BM PC #5
STA 825+90 @ 127' LT
60D NAIL IN POWER POLE
EL. = 619.070

