

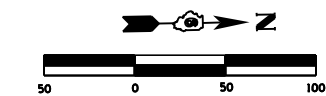
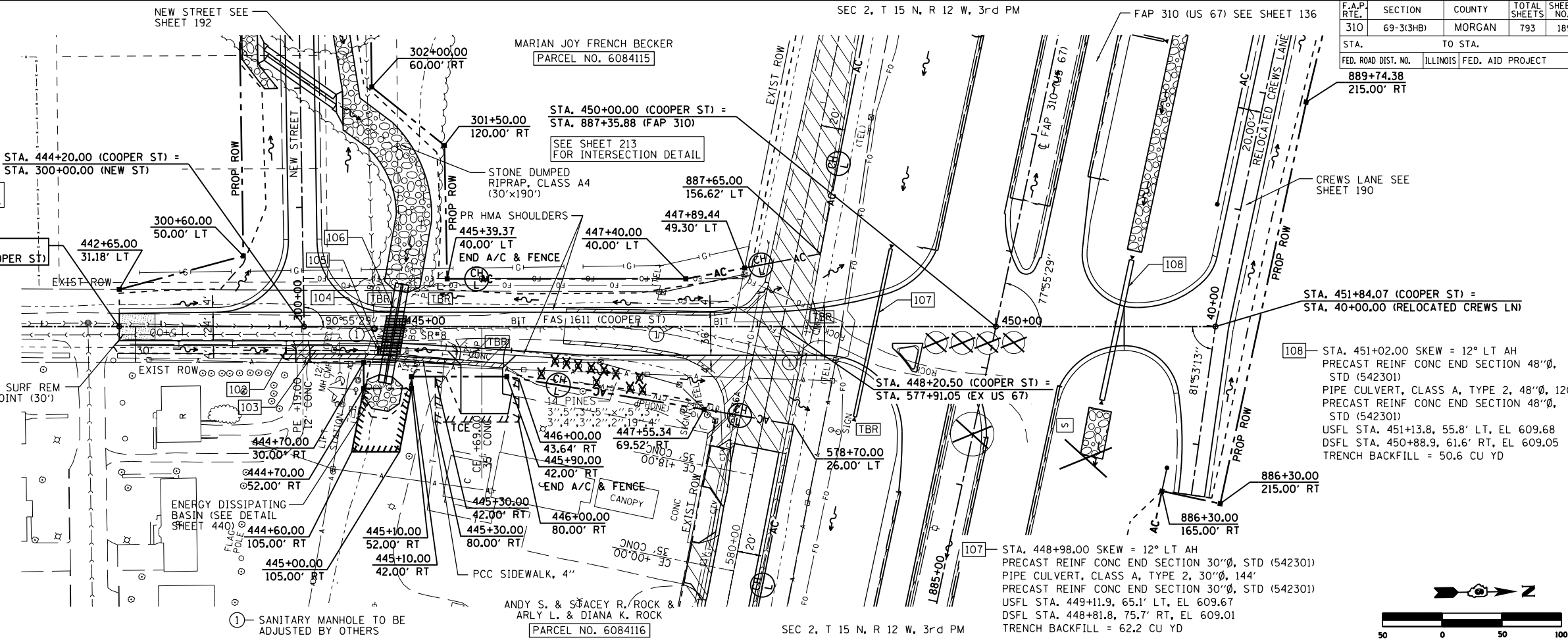
F.A.P. RTE.	SECTION	COUNTY	TOTAL SHEETS	SHEET NO.
310	69-3(3HB)	MORGAN	793	189

STA.	TO STA.
889+74.38	215.00' RT

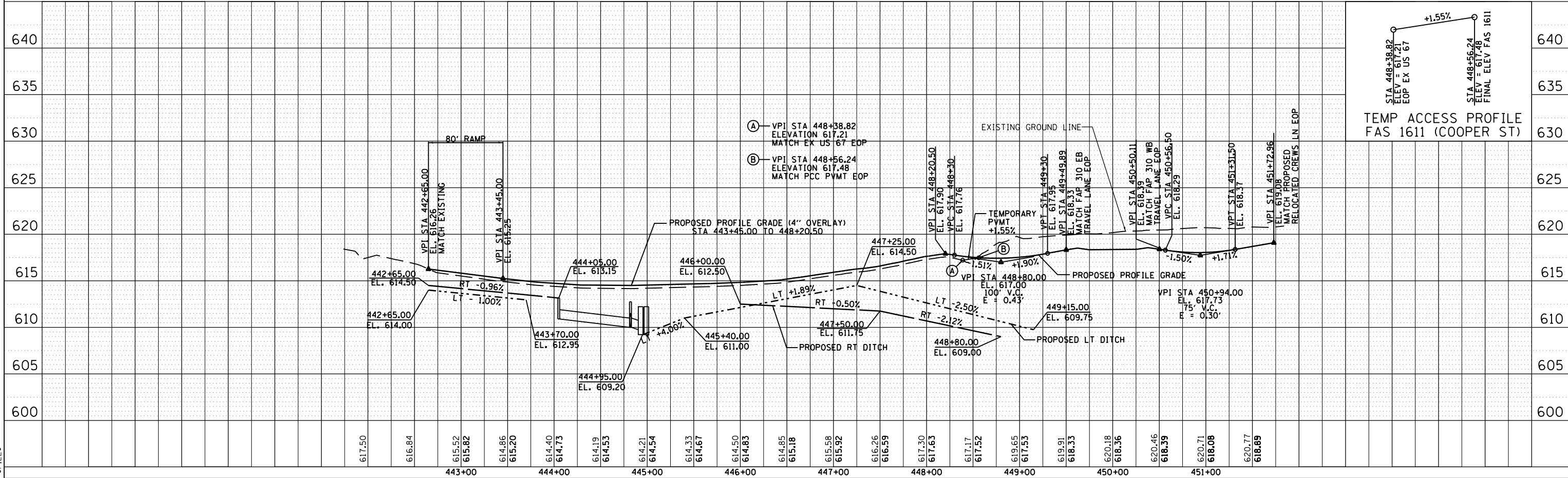
1:18:45 PM
MOR-29-2011-01:18:45PM

PLAN	SURVEYED	PLOTTED	CHECKED	DATE

- 102 - STA 444+05 20.0' RT
INLET TYPE A (STD. 602301)
W/ TY 8 GRATE (STD. 604036) - 1 EACH
INV EL = 610.90 TG = 613.15
- 103 - STORM SEWERS, CLASS A, TYPE 1 12", 75'
USFL = 610.90 DSFL = 610.00
SLOPE = 1.2%
TRENCH BACKFILL = 13.4 CU YD
- 104 - STA 444+82.0 20.2' RT
INLET TYPE A (STD. 602301)
W/ TY 8 GRATE (STD. 604036) - 1 EACH
INV EL = 610.0 TG = 612.75
- 105 - STORM SEWERS, CLASS A, TYPE 1 12", 4'
USFL = 610.00 DSFL = 609.70 (OUTLET INTO BOX)
SLOPE = 7.5%
TRENCH BACKFILL = 0.7 CU YD
- 106 - STA. 444+96 SKEW 10° LT AH
DOUBLE PRECAST CONCRETE BOX CULVERT, 5' X 3', TWO 72'
WITH CAST-IN-PLACE HEADWALLS - SEE DETAIL
USFL STA. 445+00.2, 23.6' LT, EL 609.10
DSFL STA. 444+88.7, 41.4' RT, EL 608.90
D.A.=164.3 ACRES Q50=166 CFS Q100=191 CFS



PROFILE	SURVEYED	PLOTTED	CHECKED	DATE



\$FILE\$