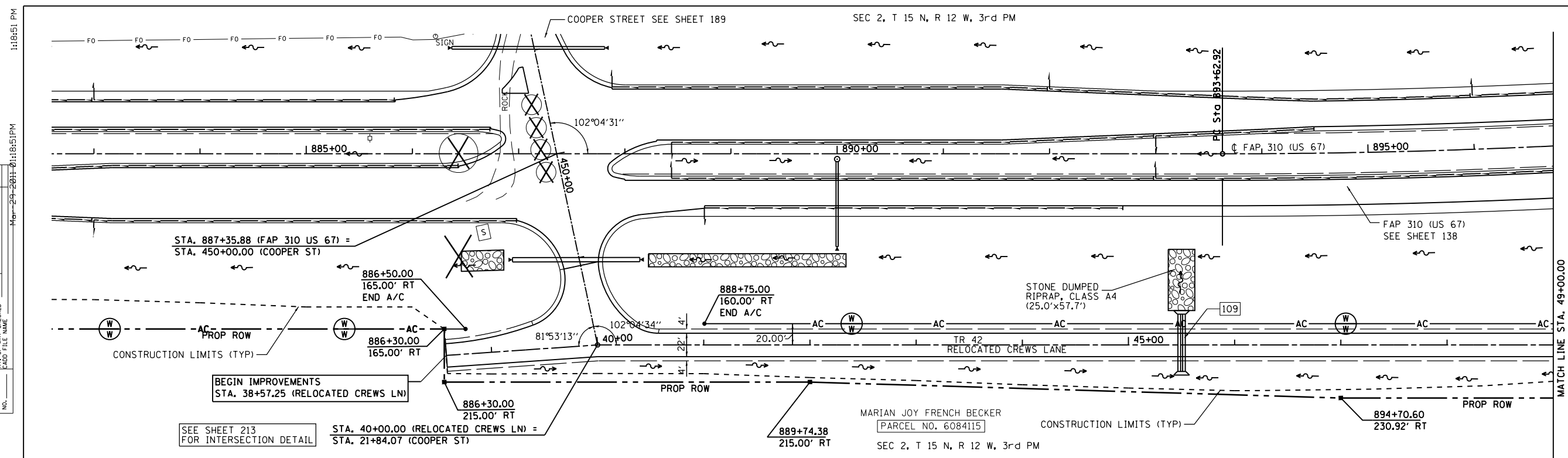
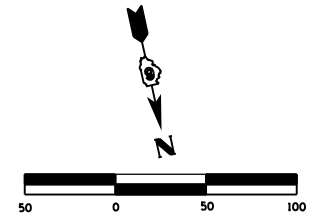


F.A.P. RTE.	SECTION	COUNTY	TOTAL SHEETS	SHEET NO.
310	69-3(3HB)	MORGAN	793	190
STA.		TO STA.		
FED. ROAD DIST. NO.		ILLINOIS	FED. AID PROJECT	



BEGIN IMPROVEMENTS  
STA. 38+57.25 (RELOCATED CREWS LN)

SEE SHEET 213  
FOR INTERSECTION DETAIL

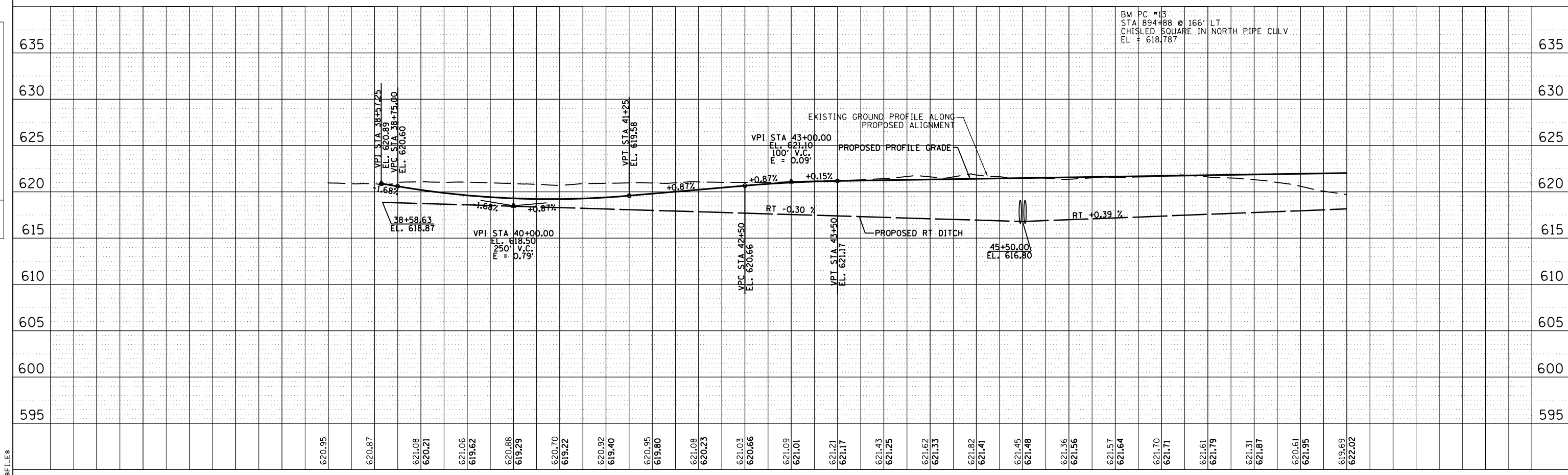
STA. 40+00.00 (RELOCATED CREWS LN) =  
STA. 21+84.07 (COOPER ST)

MARIAN JOY FRENCH BECKER  
[PARCEL NO. 6084115]  
SEC 2, T 15 N, R 12 W, 3rd PM

109- STA. 45+50.00  
CAST-IN-PLACE CONC END SECTION FOR DOUBLE 30"Ø, STD (542116)  
PIPE CULVERT, CLASS A, TYPE 2, 30"Ø, 54' (TWO BARRELS)  
CAST-IN-PLACE CONC END SECTION FOR DOUBLE 30"Ø, STD (542116)  
USFL STA. 49+50.0, 25.0' RT, EL 616.77  
DSFL STA. 49+50.0, 29.0' LT, EL 616.23  
D.A.=17.1 ACRES 050=49 CFS, 0100=58 CFS  
TRENCH BACKFILL = 15.4 CU YD

PLAN	SURVEYED	BY	DATE
	PLOTTED		
	CHECKED		
	NO. OF WAY CHECKED		
	CADD FILE NAME		

PROFILE	SURVEYED	BY	DATE
	PLOTTED		
	CHECKED		
	NO. OF WAY CHECKED		
	STRUCTURE NOTATIONS CHKD		



BM PC #13  
STA 894+88 @ 166' LT  
CHISLED SQUARE IN NORTH PIPE CULV  
EL = 618.787

\$FILE\$