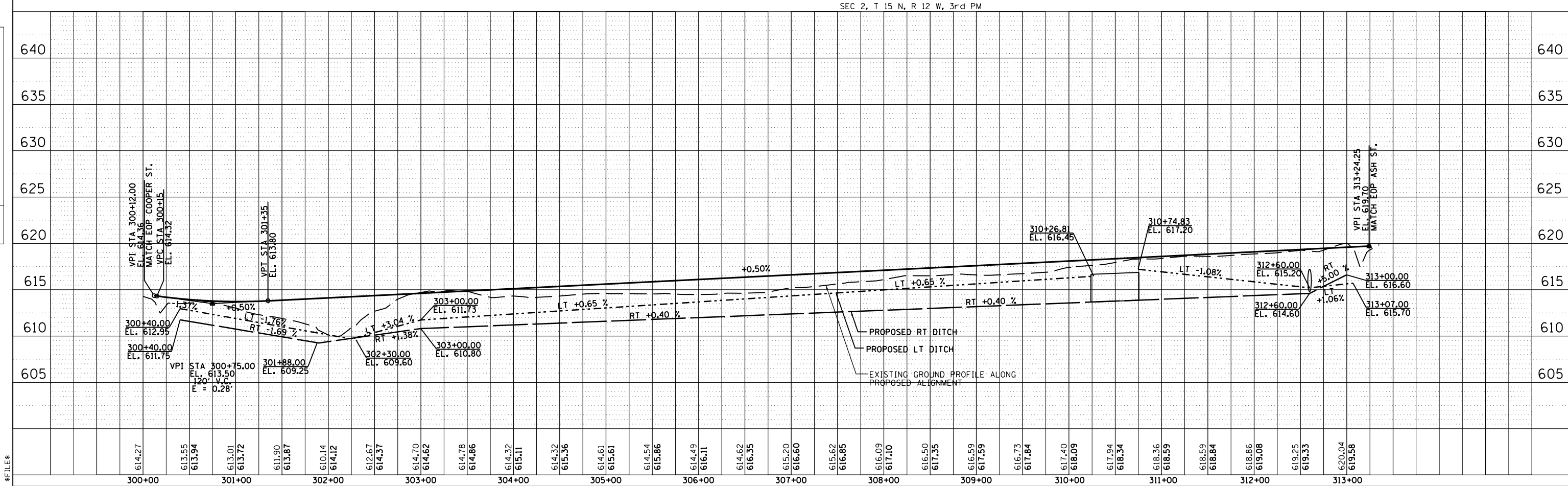
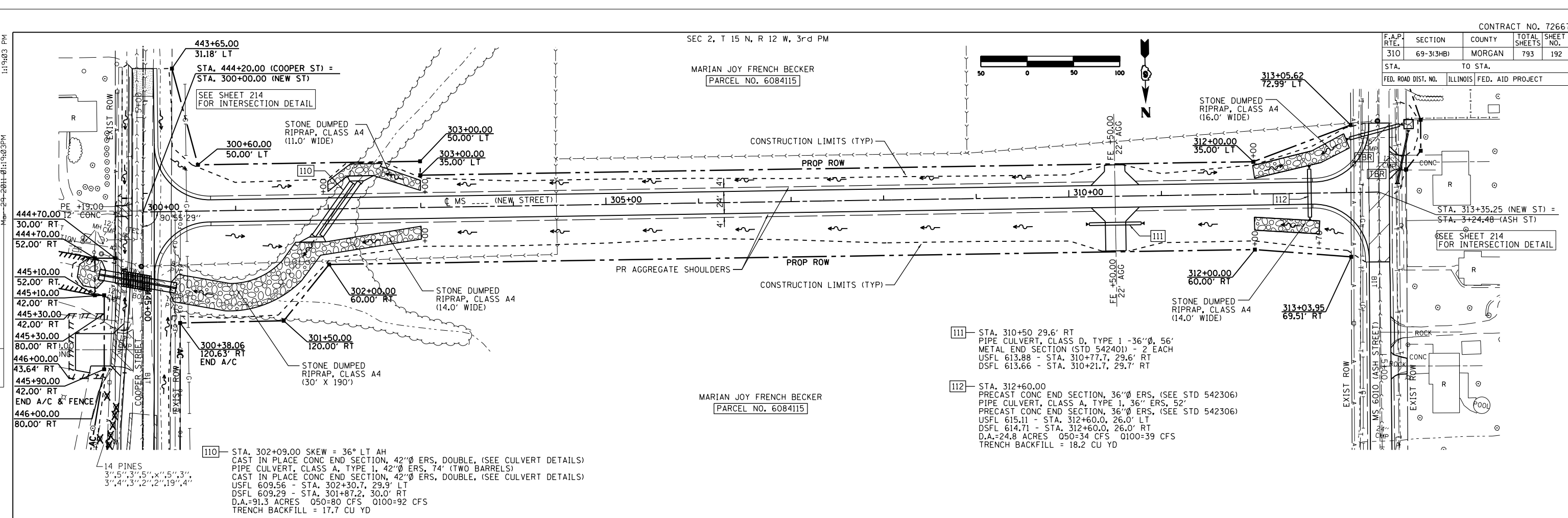


F.A.P. RTE.	SECTION	COUNTY	TOTAL SHEETS	SHEET NO.
310	69-3(3HB)	MORGAN	793	192

1:19.03 PM

DATE	BY	REVISION
		PLAN SURVEYED
		NOTED
		PLOTTED
		CHECKED
		DATE FILED

1:19.03 PM



\$FILE\$

DATE	BY	REVISION
		PROFILE SURVEYED
		NOTED
		PLOTTED
		CHECKED
		DATE FILED

1:19.03 PM

110 - STA. 302+09.00 SKEW = 36° LT AH
 CAST IN PLACE CONC END SECTION, 42" Ø ERS, DOUBLE, (SEE CULVERT DETAILS)
 PIPE CULVERT, CLASS A, TYPE 1, 42" Ø ERS, 74' (TWO BARRELS)
 CAST IN PLACE CONC END SECTION, 42" Ø ERS, DOUBLE, (SEE CULVERT DETAILS)
 USFL 609.56 - STA. 302+30.7, 29.9' LT
 DSFL 609.29 - STA. 301+87.2, 30.0' RT
 D.A.=91.3 ACRES 050=80 CFS 0100=92 CFS
 TRENCH BACKFILL = 17.7 CU YD

111 - STA. 310+50 29.6' RT
 PIPE CULVERT, CLASS D, TYPE 1 -36" Ø, 56'
 METAL END SECTION (STD 542401) - 2 EACH
 USFL 613.88 - STA. 310+77.7, 29.6' RT
 DSFL 613.66 - STA. 310+21.7, 29.7' RT

112 - STA. 312+60.00
 PRECAST CONC END SECTION, 36" Ø ERS, (SEE STD 542306)
 PIPE CULVERT, CLASS A, TYPE 1, 36" ERS, 52'
 PRECAST CONC END SECTION, 36" Ø ERS, (SEE STD 542306)
 USFL 615.11 - STA. 312+60.0, 26.0' LT
 DSFL 614.71 - STA. 312+60.0, 26.0' RT
 D.A.=24.8 ACRES 050=34 CFS 0100=39 CFS
 TRENCH BACKFILL = 18.2 CU YD

VPI STA. 300+12.00
 EL. 614.35
 MATCH TOP COOPER ST.
 VEC STA. 300+15
 EL. 614.32

VPI STA. 301+35
 EL. 613.80

VPI STA. 300+75.00
 EL. 613.50
 120' V.C.
 E = 0.28'

VPI STA. 313+24.25
 EL. 619.70
 MATCH TOP ASH ST.