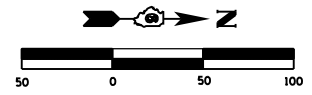


F.A.P. RTE.	SECTION	COUNTY	TOTAL SHEETS	SHEET NO.
310	69-3(3HB)	MORGAN	793	194
STA.		TO STA.		
FED. ROAD DIST. NO.		ILLINOIS	FED. AID PROJECT	



1:19:20 PM

PLAN	DATE
SURVEYED	
PLOTTED	
CHECKED	
BY	
NO. OF WAY CHECKED	
CADD FILE NAME	

PROP. CURVE C61  
 PI STA. = 76+30.32  
 $\Delta = 18^\circ 02' 28''$  (RT)  
 $D = 10^\circ 08' 27''$   
 $R = 565.00'$   
 $T = 89.70'$   
 $L = 177.91'$   
 $E = 7.08'$   
 $e = 0.040$

P.C. STA. = 75+40.63  
 P.T. STA. = 77+18.53  
 S.E. TRANSITION  
 STA 74+43.00 TO STA 75+68.00  
 STA 76+91.00 TO STA 78+16.00  
 EXIST ROW

BEGIN IMPROVEMENTS  
 STA. 72+70.40 (BETHEL LN)

STA. 73+92.41 (BETHEL LANE) =  
 STA. 510+13.39 (FRONTAGE RD) =  
 STA. 110+00.00 (RELOCATED CYLINDER HEAD RD)

SEE SHEET 218  
 FOR INTERSECTION DETAIL

JAMES A. & SUSAN LYNN LAKAMP  
 PARCEL NO. 6084120

JESSIE BERNICE HUTSON  
 PARCEL NO. 6084122

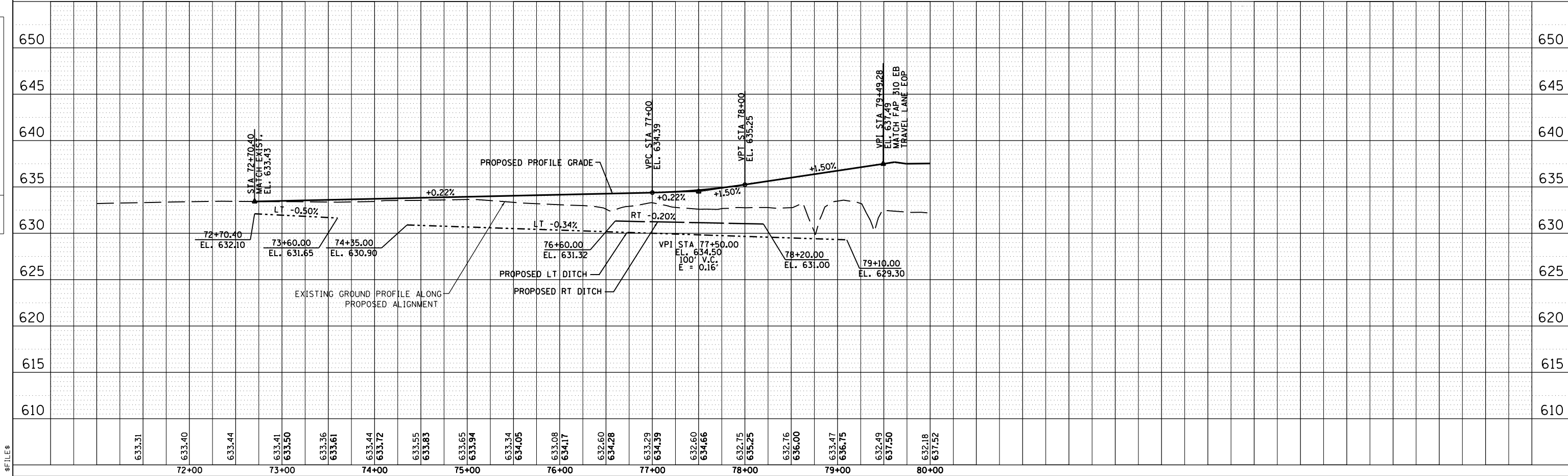
DOUGLAS E. & GLADYS H. BENNETT  
 PARCEL NO. 6084123

MORGAN COUNTY SERVICE COMPANY  
 PARCEL NO. 6084121

SEC 3, T 15 N, R 12 W, 3rd PM

- 115A - STA 76+20 23.5' RT  
 PIPE CULVERT, CLASS D, TYPE 1 -15"Ø ERS - x 60'  
 METAL END SECTION (STD. 542406) - 2 EACH  
 USFL 631.46 - STA. 75+90.2, 23.5' RT  
 DSFL 631.34 - STA. 76+50.2, 23.5' RT
- 115 - STA 77+48 35' LT  
 PIPE CULVERT, CLASS D, TYPE 1 -24"Ø - x 56'  
 METAL END SECTION (STD. 542401) - 2 EACH  
 USFL 629.94 - STA. 77+20.3, 34.6' LT  
 DSFL 629.75 - STA. 77+76.3, 34.6' LT

PROFILE	DATE
SURVEYED	
PLOTTED	
CHECKED	
BY	
NO. OF WAY CHECKED	
STRUCTURE NOTATIONS CHKD	



\$FILE\$