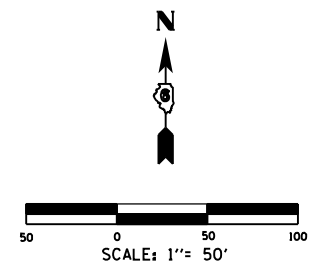


F.A.P. RTE.	SECTION	COUNTY	TOTAL SHEETS	SHEET NO.
310	69-3(3HB)	MORGAN	793	197
STA.		TO STA.		
FED. ROAD DIST. NO.		ILLINOIS FED. AID PROJECT		

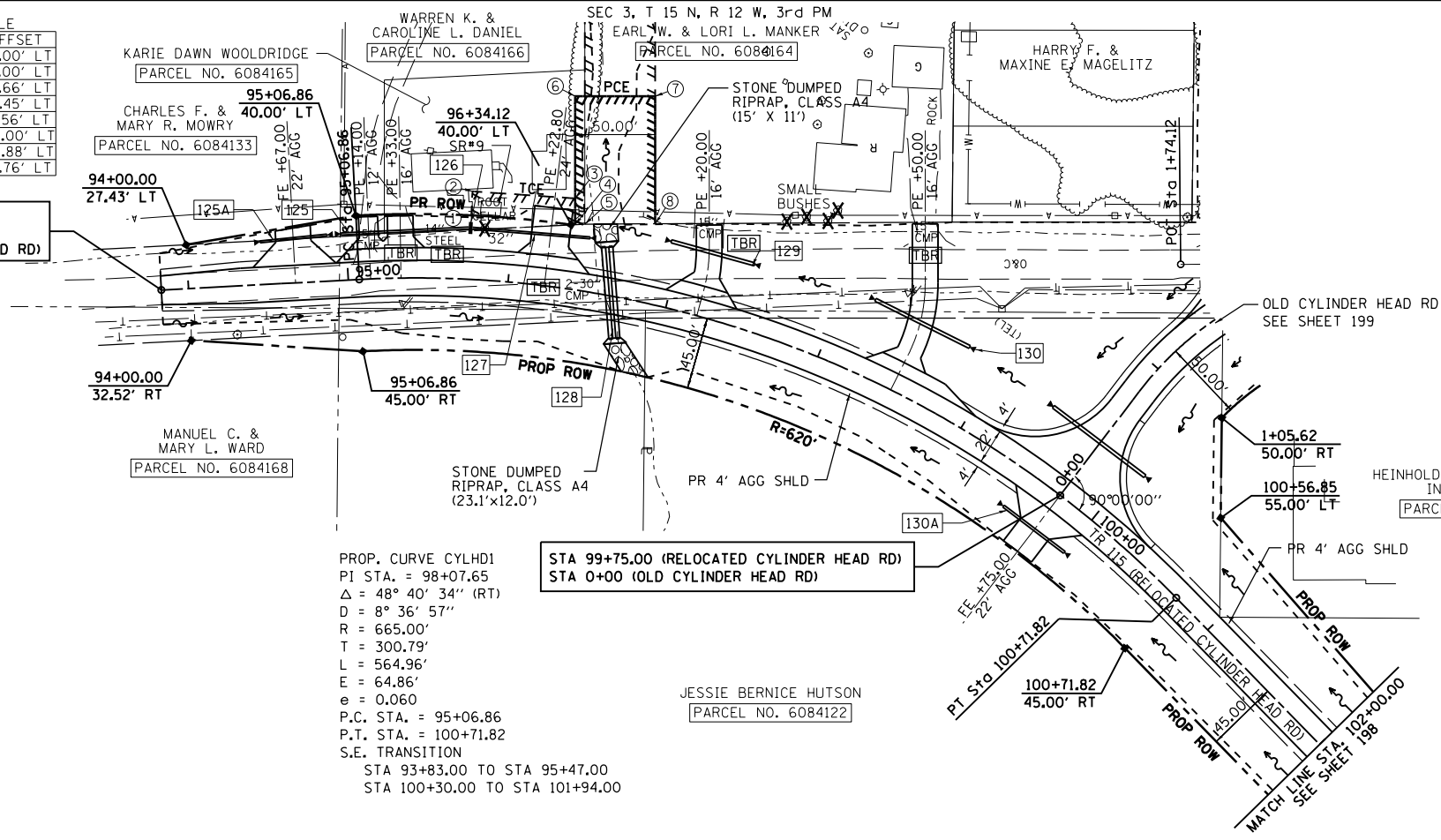


NUMBER	STATION	OFFSET
1	95+75.00	40.00' LT
2	95+75.00	55.00' LT
3	96+34.34	56.66' LT
4	96+36.46	40.45' LT
5	96+42.02	41.56' LT
6	96+26.88	120.00' LT
7	96+68.51	127.88' LT
8	96+82.28	50.76' LT

**BEGIN IMPROVEMENTS**  
**STA 93+83.00**  
**(RELOCATED CYLINDER HEAD RD)**

PROP. CURVE CYLHD1  
 PI STA. = 98+07.65  
 $\Delta = 48^\circ 40' 34''$  (RT)  
 $D = 8^\circ 36' 57''$   
 $R = 665.00'$   
 $T = 300.79'$   
 $L = 564.96'$   
 $E = 64.86'$   
 $e = 0.060$   
 P.C. STA. = 95+06.86  
 P.T. STA. = 100+71.82  
 S.E. TRANSITION  
 STA 93+83.00 TO STA 95+47.00  
 STA 100+30.00 TO STA 101+94.00

- 125A - STA 94+67.28' LT  
 PIPE CULVERT, CLASS D, TYPE 1, 15"Ø - x 42'  
 METAL END SECTION (STD 542406) - 2 EACH  
 USFL 626.08 - STA. 94+46.2, 26.7' LT  
 DSFL 625.96 - STA. 94+88.2, 28.8' LT
- 125 - STA 95+29.29' LT  
 PIPE CULVERT, CLASS D, TYPE 1, 15"Ø - x 80'  
 METAL END SECTION (STD 542406) - 1 EACH  
 USFL 625.93 - STA. 94+96.9, 29.0' LT  
 DSFL 625.70 - STA. 95+75.0, 32.0' LT
- 126 - STA 95+75.32' LT  
 TYPE B INLET (STD 602306) W FLAT SLAB TOP  
 W TYPE 8 GRATE (STD 604036)  
 TOP GRATE 628.40  
 FLOWLINE 625.10
- 127 - STA 96+22.8 32' LT  
 PIPE CULVERT, CLASS D, TYPE 1, 15"Ø - x 74'  
 METAL END SECTION (STD. 542401) - 1 EACH  
 USFL 625.60 - STA. 95+75.0, 32.0' LT  
 DSFL 625.41 - STA. 96+46.5, 33.6' LT
- 128 - STA. 96+65.00 SKEW= 15° RT AH  
 CAST-IN-PLACE CONC END SECTION FOR DOUBLE 30"Ø, STD (542116)  
 PIPE CULVERT, CLASS A, TYPE 1, 30"Ø, 58' (TWO BARRELS)  
 CAST-IN-PLACE CONC END SECTION FOR DOUBLE 30"Ø, STD (542116)  
 USFL STA. 96+72.3, 25.9' RT, EL 625.67  
 DSFL STA. 96+57.3, 30.1' LT, EL 625.38  
 TRENCH BACKFILL = 15.9 CU YD
- 129 - STA 97+20.0 41' LT  
 PIPE CULVERT, CLASS D, TYPE 1, 24"Ø - x 54'  
 METAL END SECTION (STD. 542401) - 2 EACH  
 USFL 626.04 - STA. 97+44.8, 41.0' LT  
 DSFL 625.66 - STA. 96+94.0, 41.2' LT
- 130 - STA 98+50.0 47' LT  
 PIPE CULVERT, CLASS D, TYPE 1, 24"Ø - x 66'  
 METAL END SECTION (STD. 542401) - 2 EACH  
 USFL 627.06 - STA. 98+80.1, 46.7' LT  
 DSFL 626.59 - STA. 98+18.5, 46.9' LT



130A - STA 99+75.0 26' RT  
 PIPE CULVERT, CLASS D, TYPE 1, 18"Ø - x 50'  
 METAL END SECTION (STD. 542401) - 2 EACH  
 USFL 629.23 - STA. 99+99.8, 26.4' RT  
 DSFL 629.10 - STA. 99+49.8, 26.4' RT

SEC 3, T 15 N, R 12 W, 3rd PM

DATE	BY

DATE	BY

DATE	BY

