

F.A.P. RTE.	SECTION	COUNTY	TOTAL SHEETS	SHEET NO.
310	69-3(3HB)	MORGAN	793	208
STA.		TO STA.		
FED. ROAD DIST. NO.		ILLINOIS FED. AID PROJECT		

	CONCORD ROAD	RAMP D	ELEVATION
A1	13+40.74	23.00' LT	631.61
A2	13+51.51	23.29' LT	631.86
A3	13+62.25	24.16' LT	632.10
A4	13+72.93	25.61' LT	632.35
A5	13+83.51	27.63' LT	632.59
A6	13+93.97	30.21' LT	632.84
A7	14+04.28	33.36' LT	633.08
A8	14+14.40	37.06' LT	633.31
A9	14+24.30	41.29' LT	633.48
A10	14+33.97	46.06' LT	633.60
A11	14+43.36	51.33' LT	633.66
A12	14+53.41	58.44' LT	633.65
A13	14+62.25	67.01' LT	633.58
A14	14+69.67	76.84' LT	633.43
A15	14+75.50	87.68' LT	633.23
A16	14+79.59	99.29' LT	633.03

PROP. CURVE COND-2  
 PI STA. = 17+30.96  
 $\Delta = 14^\circ 13' 15''$  (LT)  
 $D = 8^\circ 40' 52''$   
 $R = 660.00'$   
 $T = 82.33'$   
 $L = 163.81'$   
 $E = 5.12'$   
 $e = 0.058$   
 P.C. STA. = 16+48.63  
 P.T. STA. = 18+12.45  
**S.E. TRANSITION**  
 STA 15+69.00 TO STA 16+88.00  
 STA 17+73.00 TO STA 18+92.00

	CONCORD ROAD	RAMP D	ELEVATION
B1	14+97.49	104.29' LT	632.61
B2	14+95.66	95.84' LT	632.94
B3	14+94.64	87.24' LT	633.28
B4	14+94.46	78.59' LT	633.62
B5	14+95.11	69.96' LT	633.96
B6	14+96.58	61.43' LT	634.29
B7	14+98.87	53.08' LT	634.63
B8	15+01.94	44.99' LT	634.97
B9	15+05.78	37.23' LT	635.31
B10	15+10.35	29.88' LT	635.64
B11	15+15.61	23.00' LT	635.98

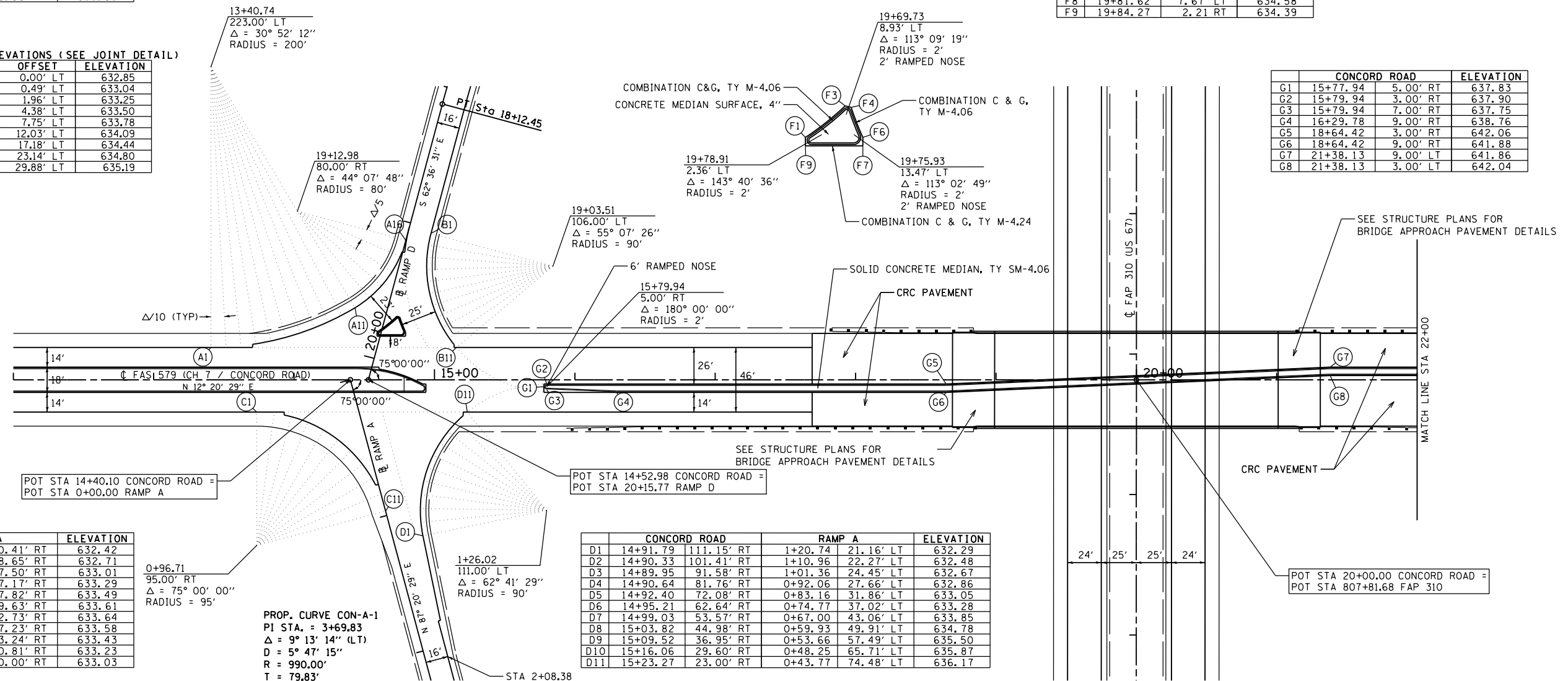
	RAMP D	ELEVATION	
F1	19+81.37	2.99' RT	634.30
F2	19+74.33	2.73' LT	634.30
F3	19+66.82	7.81' LT	634.29
F4	19+66.82	9.99' LT	634.39
F5	19+71.53	13.27' LT	634.54
F6	19+76.08	16.78' LT	634.70
F7	19+79.82	14.39' LT	634.75
F8	19+81.62	7.67' LT	634.58
F9	19+84.27	2.21' RT	634.39

	CONCORD ROAD	ELEVATION	
G1	15+77.94	5.00' RT	637.83
G2	15+79.94	3.00' RT	637.90
G3	15+79.94	7.00' RT	637.75
G4	16+29.78	9.00' RT	638.76
G5	18+64.42	3.00' RT	642.06
G6	18+64.42	9.00' RT	641.88
G7	21+38.13	9.00' LT	641.86
G8	21+38.13	3.00' LT	642.04

RAMP D CNTRL ELEVATIONS (SEE JOINT DETAIL)

STATION	OFFSET	ELEVATION
19+03.51	0.00' LT	632.85
19+13.70	0.49' LT	633.04
19+23.78	1.96' LT	633.25
19+33.68	4.38' LT	633.50
19+43.31	7.75' LT	633.78
19+52.56	12.03' LT	634.09
19+61.36	17.18' LT	634.44
19+69.63	23.14' LT	634.80
19+77.28	29.88' LT	635.19

ISLAND DETAIL



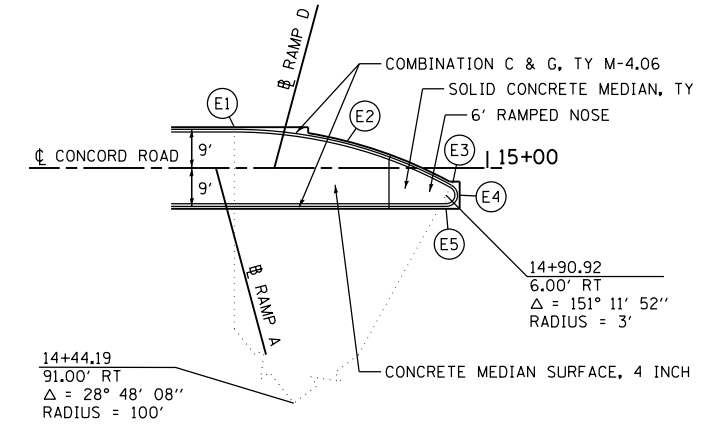
	CONCORD ROAD	RAMP A	ELEVATION		
C1	13+73.37	23.00' RT	0+04.94	70.41' RT	632.42
C2	13+85.77	23.81' RT	0+08.94	58.65' RT	632.71
C3	13+97.96	26.24' RT	0+14.43	47.50' RT	633.01
C4	14+09.73	30.23' RT	0+21.34	37.17' RT	633.29
C5	14+20.87	35.73' RT	0+29.53	27.82' RT	633.49
C6	14+31.20	42.63' RT	0+38.87	19.63' RT	633.61
C7	14+40.55	50.83' RT	0+49.21	12.73' RT	633.64
C8	14+48.74	60.17' RT	0+60.35	7.23' RT	633.58
C9	14+55.64	70.50' RT	0+72.12	3.24' RT	633.43
C10	14+61.14	81.65' RT	0+84.31	0.81' RT	633.23
C11	14+65.13	93.41' RT	0+96.71	0.00' RT	633.03

PROP. CURVE CON-A-1  
 PI STA. = 3+69.83  
 $\Delta = 9^\circ 13' 14''$  (LT)  
 $D = 5^\circ 47' 15''$   
 $R = 990.00'$   
 $T = 79.83'$   
 $L = 159.32'$   
 $E = 3.21'$   
 $e = 0.076$   
 P.C. STA. = 2+90.00  
 P.T. STA. = 4+49.32  
**S.E. TRANSITION**  
 STA 1+59.00 TO STA 3+55.00  
 STA 3+70.00 TO STA 6+62.00

	CONCORD ROAD	RAMP A	ELEVATION		
D1	14+91.79	111.15' RT	1+20.74	21.16' LT	632.29
D2	14+90.33	101.41' RT	1+10.96	22.27' LT	632.48
D3	14+89.95	91.58' RT	1+01.36	24.45' LT	632.67
D4	14+90.64	81.76' RT	0+92.06	27.66' LT	632.86
D5	14+92.40	72.08' RT	0+83.16	31.86' LT	633.05
D6	14+95.21	62.64' RT	0+74.77	37.02' LT	633.28
D7	14+99.03	53.57' RT	0+67.00	43.06' LT	633.85
D8	15+03.82	44.98' RT	0+59.93	49.91' LT	634.78
D9	15+09.52	36.95' RT	0+53.66	57.49' LT	635.50
D10	15+16.06	29.60' RT	0+48.25	65.71' LT	635.87
D11	15+23.27	23.00' RT	0+43.77	74.48' LT	636.17

RAMP A B & EOP ELEVATIONS				
STATION	OFFSET	ELEVATION	OFFSET	ELEVATION
0+28.10	0.00' LT	634.18	16.00' LT	634.66
0+50.00	0.00' LT	633.81	16.00' LT	634.13
0+75.00	0.00' LT	633.39	16.00' LT	633.51
1+00.00	0.00' LT	632.98	16.00' LT	632.90
1+20.74	0.00' LT	632.63	16.00' LT	632.39

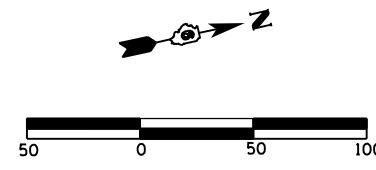
MEDIAN DETAIL



	CONCORD ROAD	ELEVATION	
E1	14+44.19	9.00' LT	634.41
E2	14+69.06	5.86' LT	635.07
E3	14+92.37	3.37' RT	635.69
E4	14+93.92	6.00' RT	635.69
E5	14+90.92	9.00' RT	635.57

REVISIONS	
NAME	DATE

ILLINOIS DEPARTMENT OF TRANSPORTATION  
 GEOMETRIC DETAILS  
 INTERSECTION OF CONCORD ROAD  
 RAMP A AND RAMP D  
 FAP 310 (US 67/IL 104)  
 SHEET 3 OF 23  
 DATE 5/06  
 DRAWN BY EBB  
 CHECKED BY



8:45:20 AM  
 Mar-30-2011 08:45:20 AM  
 \$FILE\$