

9:27:38 AM
May-19-2011 09:27:38AM

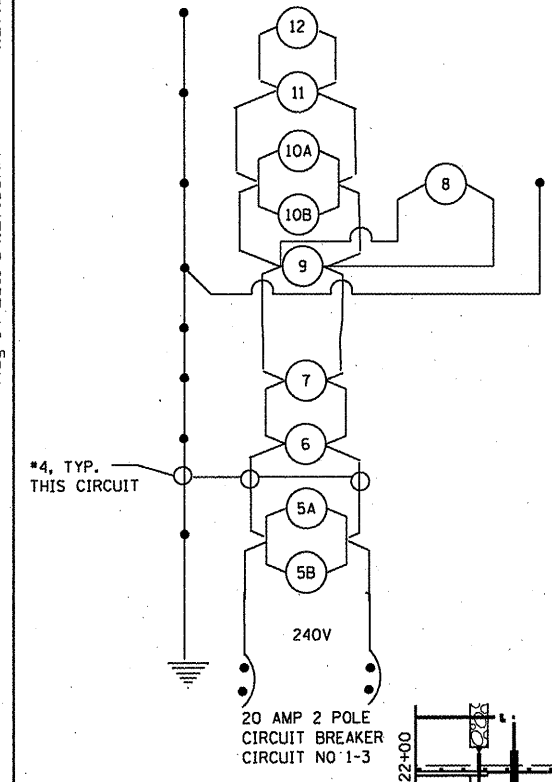
\$FILE\$

CONTRACT NO. 72667

F.A.P. RTE.	SECTION	COUNTY	TOTAL SHEETS	SHEET NO.
310	69-3(3HB)	MORGAN	793	309
STA.		TO STA.		
FED. ROAD DIST. NO.		ILLINOIS FED. AID PROJECT		

LIGHT POLE LOCATIONS

POLE	STATION	OFFSET
9	22+85	45' RT
10A 10B	24+70	55' RT
11	26+90	45' RT
12	28+80	45' RT



20 AMP 2 POLE CIRCUIT BREAKER CIRCUIT NO 1-3

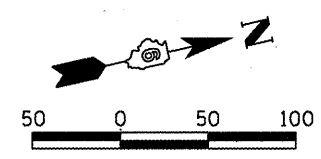
Sta 22+65
2" conduit (IMC), 80'

STA 18+30
2" CONDUIT (IMC), 40'

MATCH LINE STA 22+00

LEGEND

- Electric Service Installation, 60 Amp 120/240V Single Phase
- ⊠ Lighting Controller, Pole Mounted 60 amp., 240 Volt
- Light Pole, Weathering Steel, 45 Ft. M.H., Tenon Mount With 250W HPS Multi-Mount Luminaire
- Unit Duct, 600 v. Size as Indicated
- Conduit Length — XX' Type of Material Diameter — XX"



REVISIONS	
NAME	DATE

ILLINOIS DEPARTMENT OF TRANSPORTATION
LIGHTING DETAILS
CONCORD ROAD
FAP 310 (US 67)

DATE 9/09
 DRAWN BY BCG
 CHECKED BY

SECTION 69-3(3HB)

MORGAN COUNTY

SHEET 2 OF 8