

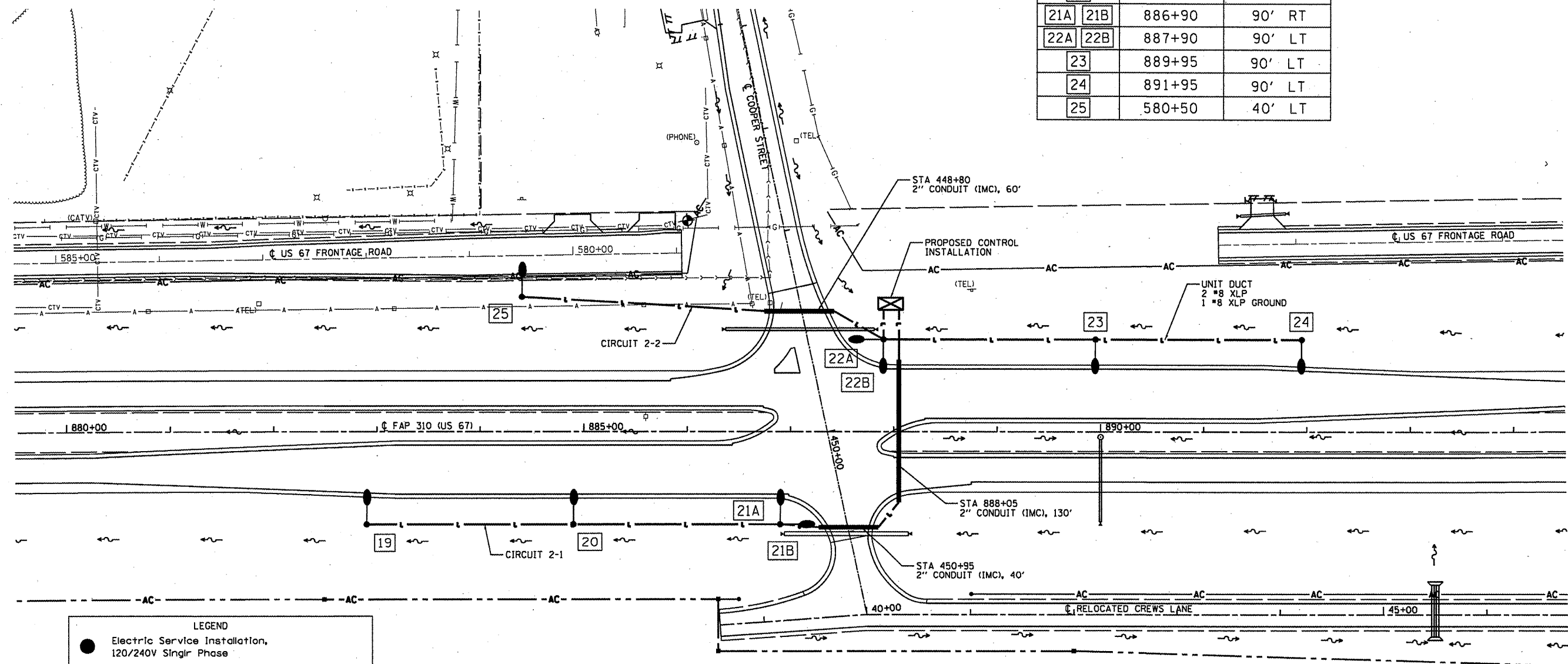
9:38:29 AM  
 Mar-30-2011 09:38:29AM

CONTRACT NO. 72667

F.A.P. RTE.	SECTION	COUNTY	TOTAL SHEETS	SHEET NO.
310	69-3(3HB)	MORGAN	793	312
STA. TO STA.		ILLINOIS FED. AID PROJECT		

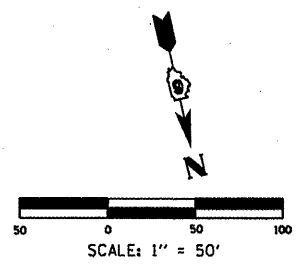
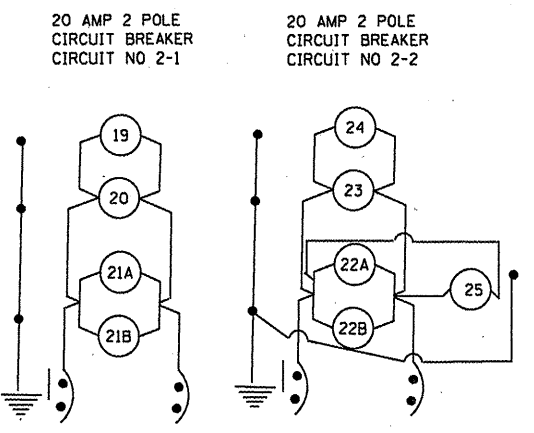
LIGHT POLE LOCATIONS

POLE	STATION	OFFSET
19	882+90	90' RT
20	884+90	90' RT
21A	886+90	90' RT
22A	887+90	90' LT
23	889+95	90' LT
24	891+95	90' LT
25	580+50	40' LT



**LEGEND**

- Electric Service Installation, 120/240V Single Phase
- ⊠ Lighting Controller, Relay 30 amp., 240 Volt
- LIGHT POLE, WEATHERING STEEL, 45 FT. M.H., TENON MOUNT W/ 250W HPS MULTI-MOUNT LUMINAIRE
- Unit Duct, 600 v. 2-1C no. 8 1/C No. 8 Ground, (XLP-Type use), 3-4" Polyethylene
- Conduit Length — XX' Type of Material Diameter — X"



REVISIONS	
NAME	DATE

ILLINOIS DEPARTMENT OF TRANSPORTATION  
**LIGHTING DETAILS**  
 COOPER ST & REL CREWS LN  
 FAP 310 (US 67)

DATE 9/09  
 DRAWN BY BGJ  
 CHECKED BY