

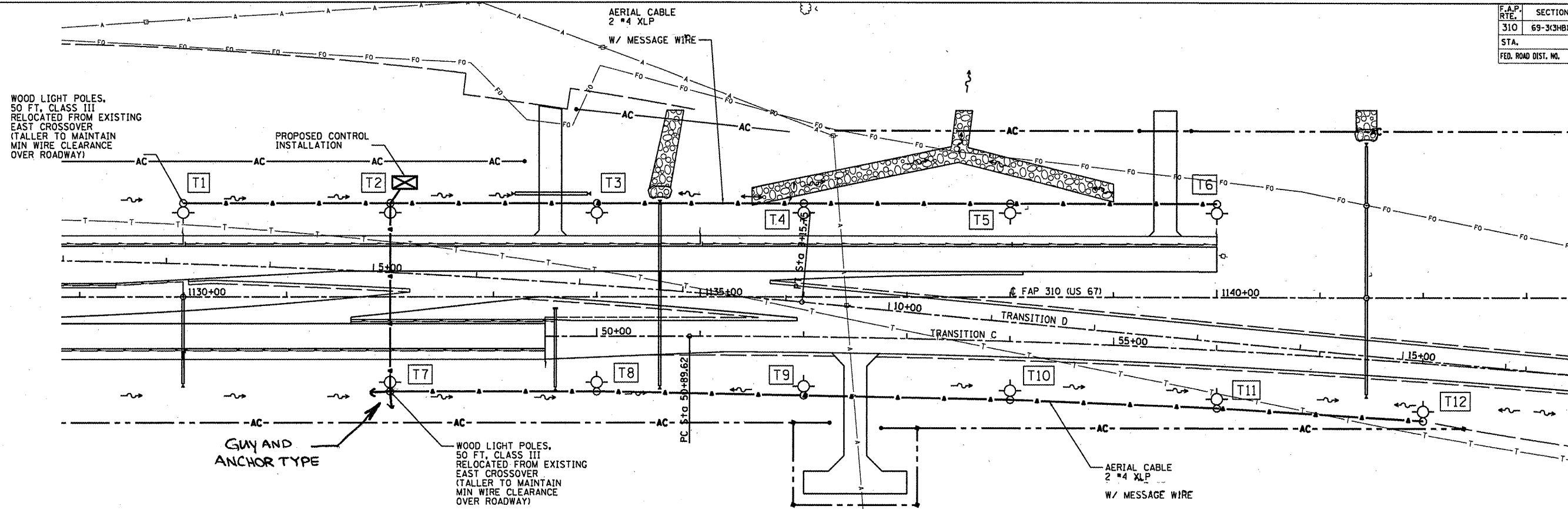
9:38:48 AM

Mar-30-2011 09:38:48AM

\$FILE\$

CONTRACT NO. 72667

F.A.P. RTE.	SECTION	COUNTY	TOTAL SHEETS	SHEET NO.
310	69-3(3HB)	MORGAN	793	315
STA.		TO STA.		
FED. ROAD DIST. NO.		ILLINOIS FED. AID PROJECT		



**NOTE:**

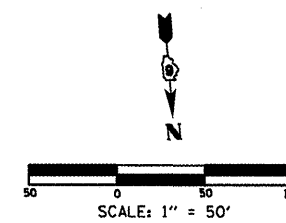
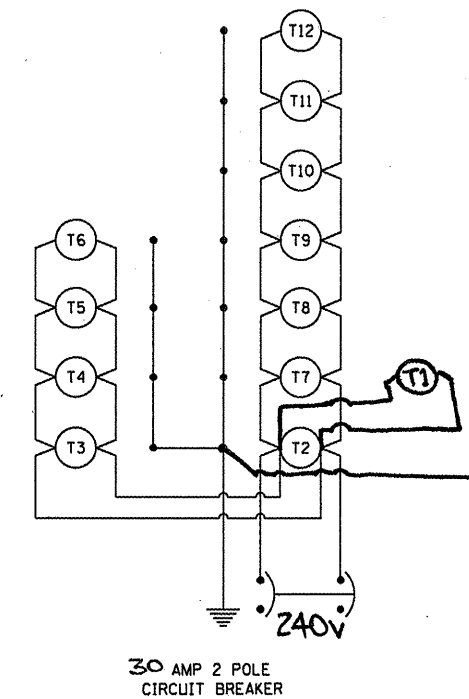
GUYS AND ANCHORS SHOWN AS AN EXAMPLE AND SHALL BE INSTALLED AS NECESSARY TO THE SATISFACTION OF THE ENGINEER.

**LEGEND**

- Electric Service Installation, 30 Amp 120/240V Single Phase
- ⊠ Lighting Controller, Relay 30 amp., 240 Volt
- Temporary Light pole, Wood, 50ft M.H., Class III
- Aerial Cable, 2 #4 XLP, 1 #4 XLP Ground W/ Message Wire
- Conduit Length — XX' Type of Material Diameter — X"

**LIGHT POLE LOCATIONS**

POLE	STATION	OFFSET
T1	1130+00	80' LT
T2	1132+00	80' LT
T3	1134+00	80' LT
T4	1136+00	80' LT
T5	1138+00	80' LT
T6	1140+00	80' LT
T7	1132+00	80' RT
T8	1134+00	80' RT
T9	1136+00	84' RT
T10	1138+00	98' RT
T11	1140+00	106' RT
T12	1142+00	118' RT



REVISIONS	
NAME	DATE

ILLINOIS DEPARTMENT OF TRANSPORTATION  
**LIGHTING DETAILS**  
**WEST CROSSOVER**  
**FAP 310 (US 67)**

DATE 9/09  
 DRAWN BY BGL  
 CHECKED BY