

Benchmark: BM#PC3 - 60d Spike in Power Pole at Northeast quad of U.S. 67/IL 104 and Arenzville/Concord Road. Sta. 804+42.4, 108.6' Lt. of Proposed C of Roadway. Elev. 615.941

Existing Structure: None

INDEX OF SHEETS

Sheet No.	Description
1	General Plan & Elevation
2-4	Top of Slab Elevations
5	Top of South Approach
6	Top of North Approach
7	Superstructure
8	Diaphragm Details
9	Superstructure Details
10-11	Bridge Approach Slab Details
12	54" PPC I-Beam Details
13	54" PPC I-Beam Details
14	Abutments
15	Pier
16	Pile Details
17	Bar Splicer Assembly Details
18-20	Boring Logs

ROUTE NO.	SECTION	COUNTY	TOTAL SHEETS	SHEET NO.
F.A.S. 579	69-3(3HB)	MORGAN	793	324A
FED. ROAD DIST. NO.	ILLINOIS	FED. AID PROJECT	SHEET NO. 1 OF 20 SHEETS	

Contract No. 72667

TOTAL BILL OF MATERIAL

ITEM	UNIT	SUPER	SUB	TOTAL
Porous Granular Embankment, Special	Cu. Yd.		322.3	322.3
Structure Excavation	Cu. Yd.		214.1	214.1
Concrete Structures	Cu. Yd.		240.6	240.6
Concrete Superstructure	Cu. Yd.	721.4		721.4
Bridge Deck Grooving	Sq. Yd.	1634		1634
Protective Coat	Sq. Yd.	2141		2141
F & E Precast Prestressed Conc. I-Beams, 54 In.	Foot	2200		2200
Reinforcement Bars, Epoxy Coated	Pound	161780	27520	189300
Slope Wall 4 Inch	Sq. Yd.	713		713
Furnishing Steel Piles, HP 12x63	Foot		1968	1968
Furnishing Steel Piles, HP 14x73	Foot		2448	2448
Driving Piles	Foot		4416	4416
Test Pile, HP 14x73	Each		2	2
Name Plate	Each	1		1
Bar Splicers	Each	138		138
Pipe Underdrains For Structures 4"	Foot		220	220
Concrete Encasement	Cu. Yd.		14.2	14.2

GENERAL NOTES

Reinforcement bars shall conform to the requirements of ASTM A 706 Grade 60. See Special Provisions.
 Reinforcement bars designated (E) shall be epoxy coated.
 The embankment configuration shown shall be the minimum that must be placed and compacted prior to construction of the abutments.
 All embedded and separate bearing plates, side retainers, anchor bolts, nuts, washers, and pintles shall be galvanized according to AASHTO M111 or M232 (as applicable).
 Slope wall shall be reinforced with welded wire fabric, 6" x 6" - W4.0 x W4.0, weighing 58 lbs. per 100 sq.ft.
 Slipforming of the parapets is not allowed.

LOADING HS20-44

Allow 50#/sq. ft. for future wearing surface.

DESIGN SPECIFICATIONS

2002 A.A.S.H.T.O. Specifications.

DESIGN STRESSES

FIELD UNITS

f'c = 3500 p.s.i.

f'y = 60000 p.s.i. (Reinforcement)

PRECAST PRESTRESSED UNITS

f'c = 6000 p.s.i.

f'ci = 5000 p.s.i.

f's = 270000 p.s.i. (1/2" low lax strands)

f'si = 201960 p.s.i. (1/2" low lax strands)

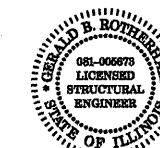
SEISMIC DATA

Seismic Performance Category (SPC) = A
 Bedrock Acceleration Coefficient (A) = 0.048g
 Site Coefficient (S) = 1.5

STA. 807+81.68
 BUILT BY
 STATE OF ILLINOIS
 F.A.S. RTE. 579 SECTION 69-3(3HB)
 LOADING HS20
 STR. NO. 069-0513

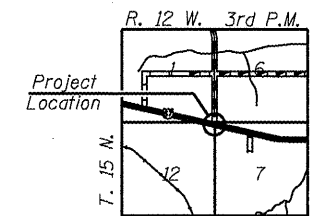
NAME PLATE

(Standard 515001)

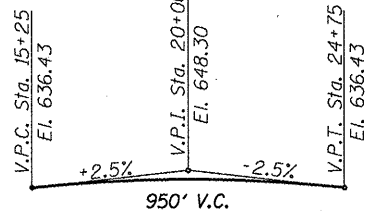
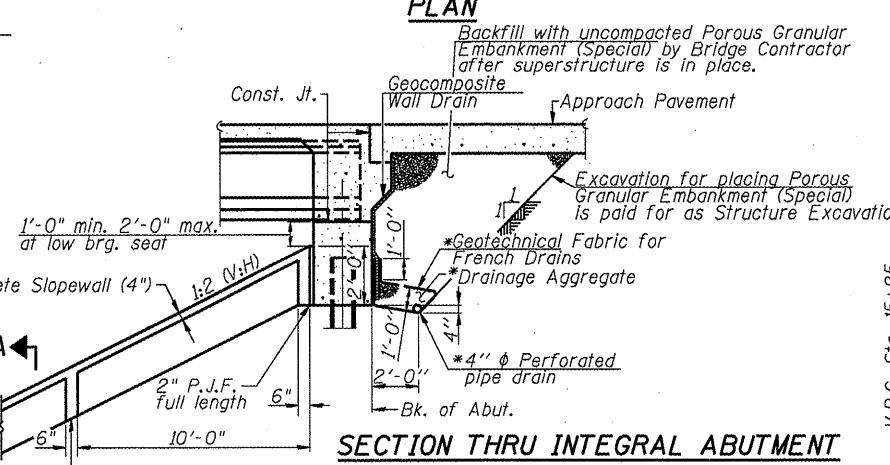
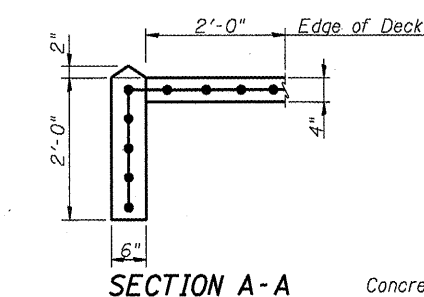
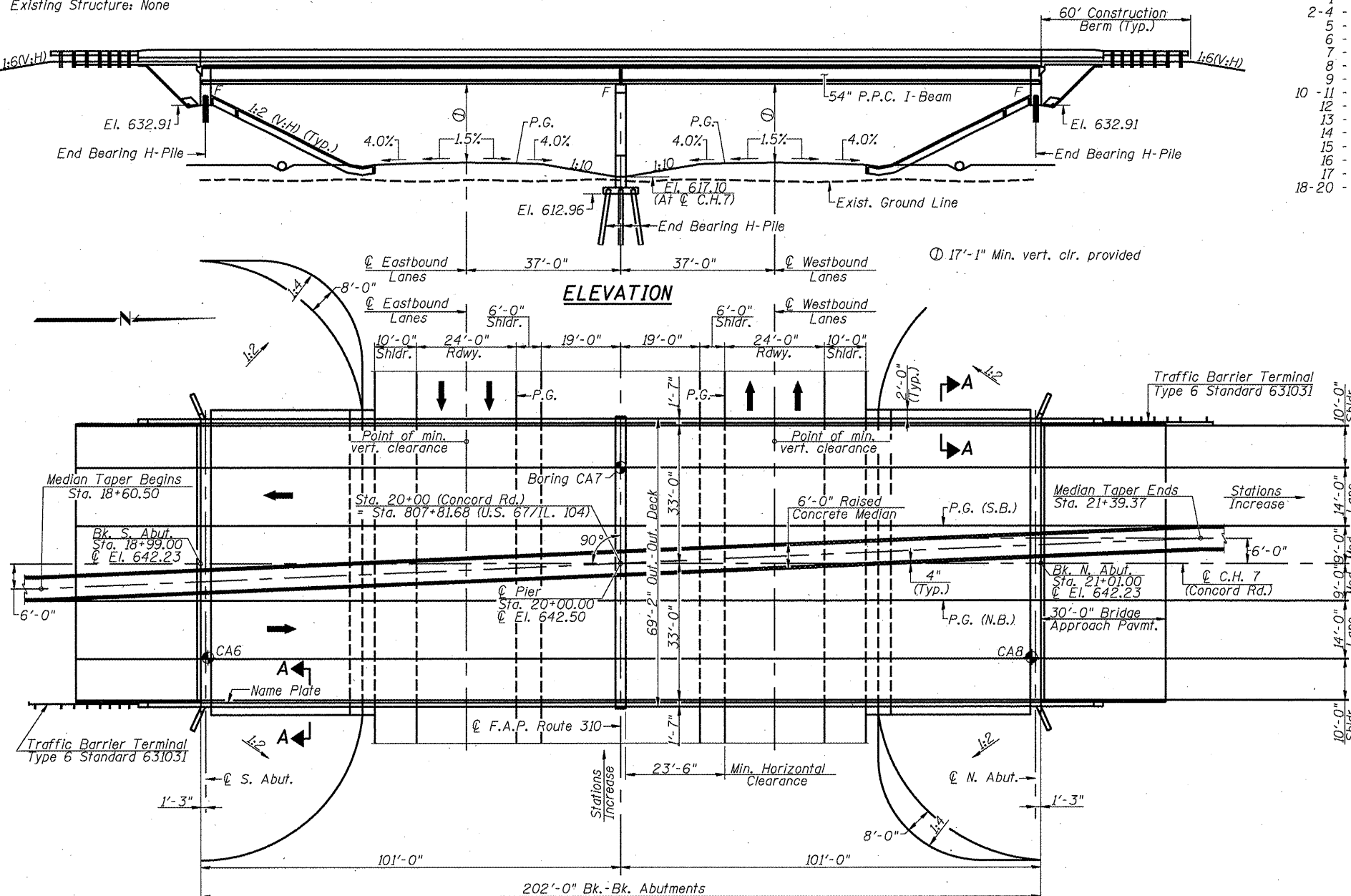


David B. Hoffmann 5/4/11
 Expiration: 11/30/2012

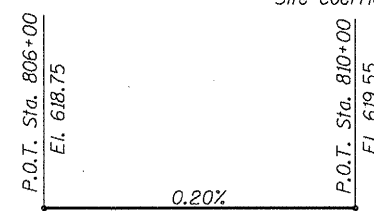
GENERAL PLAN AND ELEVATION
C.H. 7 (CONCORD RD.) (F.A.S. 579)
OVER U.S. 67/IL 104 (F.A.P. 310)
MORGAN COUNTY
STA. 807+81.68 - SECTION 69-3(3HB)
S.N. 069-0513



LOCATION SKETCH



PROFILE GRADE
 F.A.S. 579/C.H. 7
 (Median edge of pavement)



PROFILE GRADE
 U.S. 67/IL 104

Designed: F.L.L.
 Checked: G.B.R.
 Drawn: F.L.L.
 Checked: G.B.R.

Note: * Included in the cost of Pipe Underdrains for Structures.
 All drainage system components shall extend to 2'-0" from the end of each wingwall except an outlet pipe shall extend until intersecting with the side slopes. The pipes shall drain into concrete headwalls. (See Article 601.05 of the Standard Specifications and Highway Standard 601101).