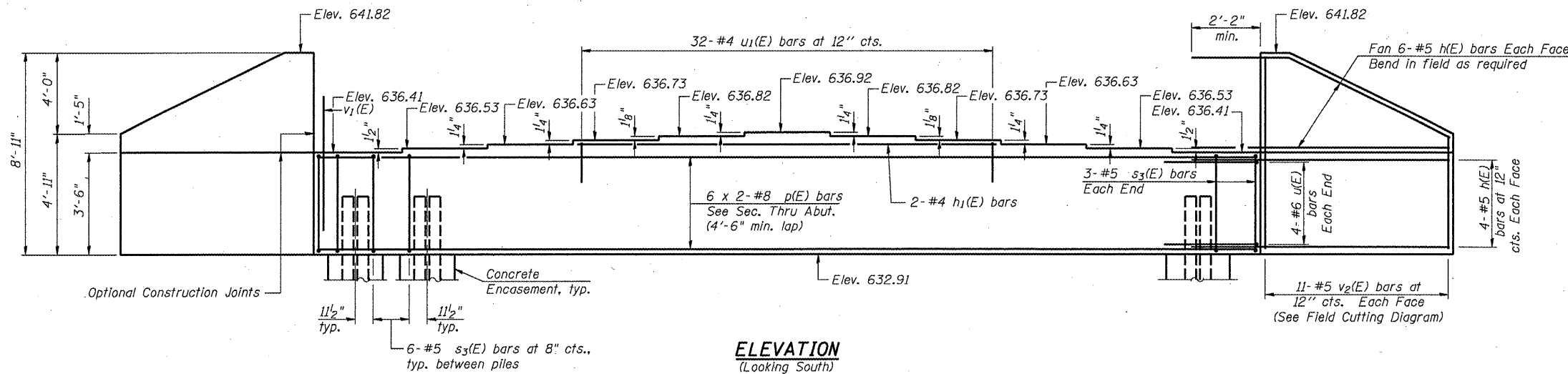


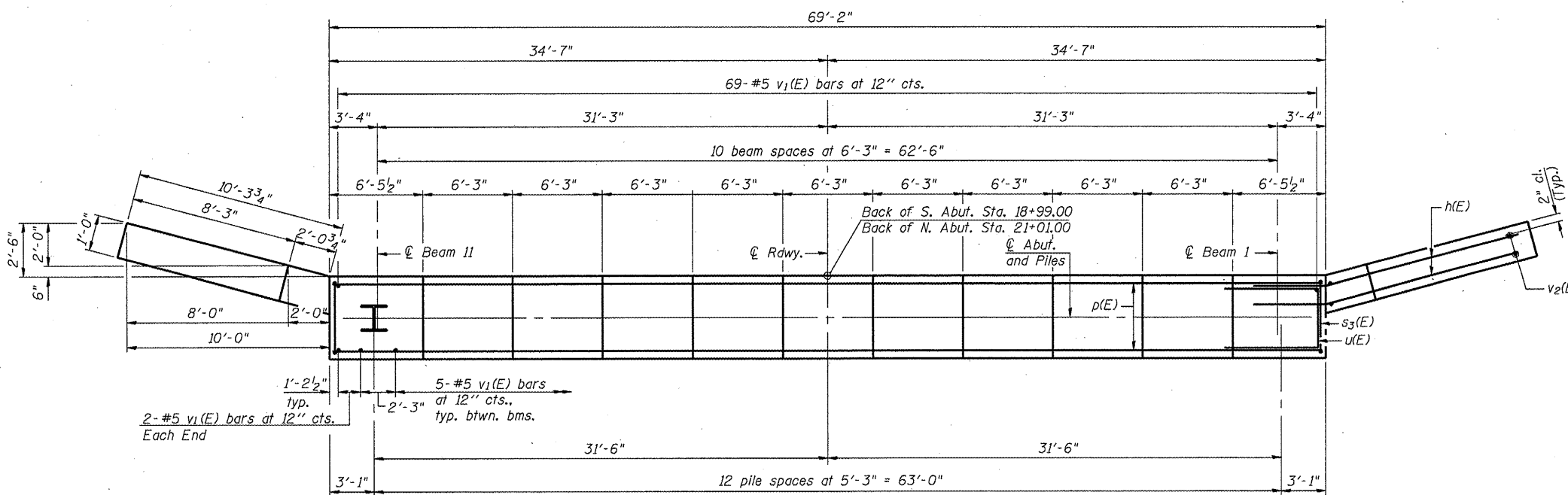
Notes: Pour steps monolithically with cap.

|                     |           |                  |                    |           |
|---------------------|-----------|------------------|--------------------|-----------|
| ROUTE NO.           | SECTION   | COUNTY           | TOTAL SHEETS       | SHEET NO. |
| F.A.S. 579          | 69-3(3HB) | MORGAN           | 793                | 337       |
| FED. ROAD DIST. NO. | ILLINOIS  | FED. AID PROJECT | Contract No. 72667 |           |

SHEET NO. 14  
OF 20 SHEETS



**ELEVATION**  
(Looking South)



**PLAN**

(S. Abut. shown, N. Abut. is mirror image)

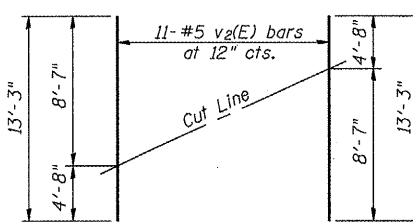
**SOUTH ABUTMENT PILE DATA**

Type: HP 14x73  
Nominal Required Bearing: 578 kips  
Allowable Resistance Available: 141 kips  
Est. Length: 102 ft.  
No. Production Piles: 12  
No. Test Piles: 1

**NORTH ABUTMENT PILE DATA**

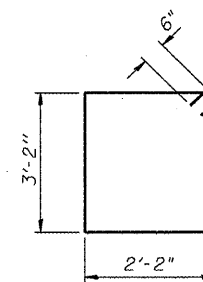
Type: HP 14x73  
Nominal Required Bearing: 578 kips  
Allowable Resistance Available: 129 kips  
Est. Length: 102 ft.  
No. Production Piles: 12  
No. Test Piles: 1

Note: Piles shall be driven through 18" diameter precored holes extending to elevation 612 ft. according to Article 512.09(c) of the Standard Specifications. Cost Included in Driving Piles.

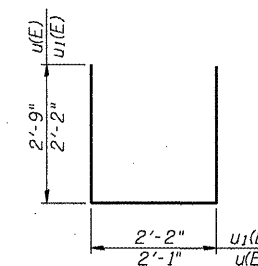


**FIELD CUTTING DIAGRAM**

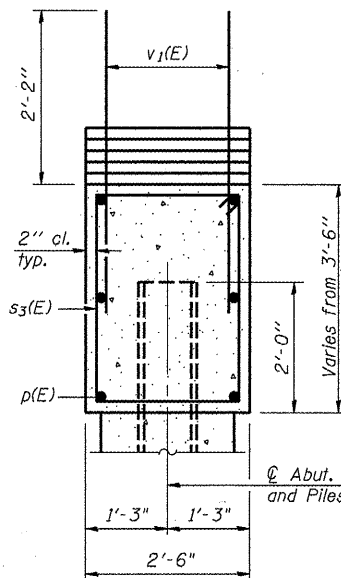
Order v2(E) full length. Cut as shown and use remainder of bars in opposite face.



**BAR s3(E)**



**BAR u(E) & u1(E)**



**SEC. THRU ABUT.**

**BILL OF MATERIAL  
TWO ABUTMENTS**

| Bar                              | No.     | Size | Length  | Shape |
|----------------------------------|---------|------|---------|-------|
| h(E)                             | 80      | #5   | 13'-3"  | —     |
| h1(E)                            | 4       | #4   | 30'-11" | —     |
| p(E)                             | 24      | #8   | 36'-8"  | —     |
| s3(E)                            | 156     | #5   | 11'-8"  | □     |
| u(E)                             | 16      | #6   | 7'-7"   | —     |
| u1(E)                            | 64      | #4   | 6'-6"   | —     |
| v1(E)                            | 246     | #5   | 4'-4"   | —     |
| v2(E)                            | 44      | #5   | 13'-3"  | —     |
| Structure Excavation             | Cu. Yd. | 83.4 |         |       |
| Concrete Structures              | Cu. Yd. | 59.2 |         |       |
| Reinforcement Bars, Epoxy Coated | Pound   | 7620 |         |       |
| Furnishing Steel                 | Foot    | 2448 |         |       |
| Piles, HP 14x73                  | Foot    | 2448 |         |       |
| Driving Piles                    | Foot    | 2448 |         |       |
| Test Pile, HP 14x73              | Each    | 2    |         |       |
| Concrete Encasement              | Cu. Yd. | 14.2 |         |       |

For details of Bar Splicers, see sheet 17 of 20.  
For details of piles and Concrete Encasement, see sheet 16 of 20.

**SOUTH AND NORTH ABUTMENTS  
C.H. 7 (CONCORD RD.) (F.A.S. 579)  
OVER U.S. 67/IL 104 (F.A.P. 310)  
MORGAN COUNTY  
STA. 807+81.68 - SECTION 69-3(3HB)  
S.N. 069-0513**