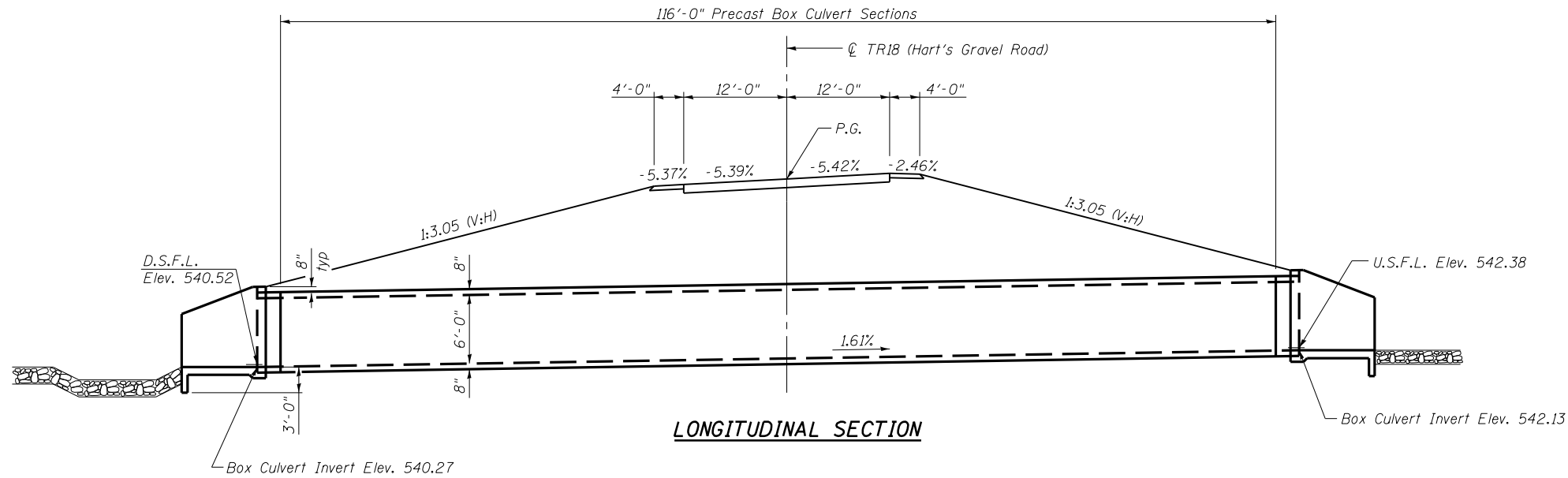


9:40:59 AM

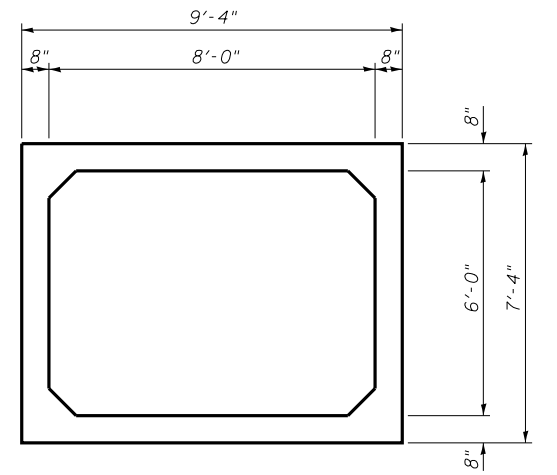
Mar-30-2011 09:40:59AM

CONTRACT NO. 72667

F.A.P. RTE.	SECTION	COUNTY	TOTAL SHEETS	SHEET NO.
310	69-3(3HB)	MORGAN	793	361
STA.		TO STA.		
FED. ROAD DIST. NO.	ILLINOIS	FED. AID PROJECT		



LONGITUDINAL SECTION



SECTION THRU BARREL

LOADING HS20-44

Allow 50#/sq. ft. for future wearing surface.

DESIGN SPECIFICATIONS

2002 AASHTO Standard Specifications

DESIGN STRESSES

FIELD UNITS

$f'_c = 3,500$ psi

$f_y = 60,000$ psi (Reinforcement)

PRECAST UNITS

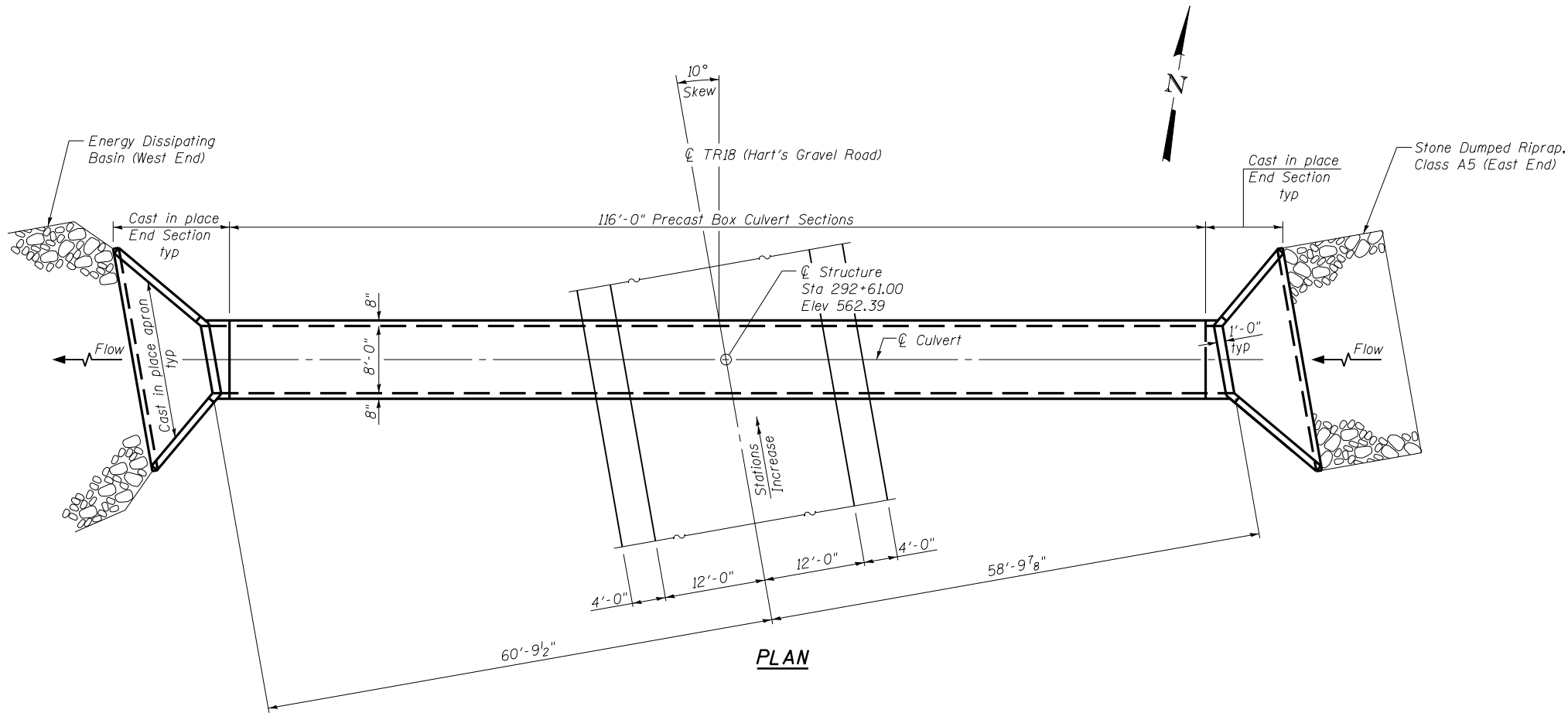
$f'_c = 5,000$ psi

$f_y = 65,000$ psi (Welded Wire Fabric)

Note:
The precast concrete box culverts shall conform to the requirements of AASHTO M 259.

TOTAL BILL OF MATERIAL

ITEM	UNIT	TOTAL
Concrete Box Culverts	Cu. Yd.	29.5
Granular Culvert Backfill	Cu. Yd.	421
Precast Concrete Box Culvert 8'x6' (M259)	Foot	116.0
Reinforcement Bars	Pound	2,390



PLAN

\$FILE\$

REVISIONS	
NAME	DATE

ILLINOIS DEPARTMENT OF TRANSPORTATION
**GENERAL PLAN & ELEVATION
 STATION 292+61.00**
 TR 18 (HART'S GRAVEL ROAD)
 DRAWN BY
 CHECKED BY
 DATE