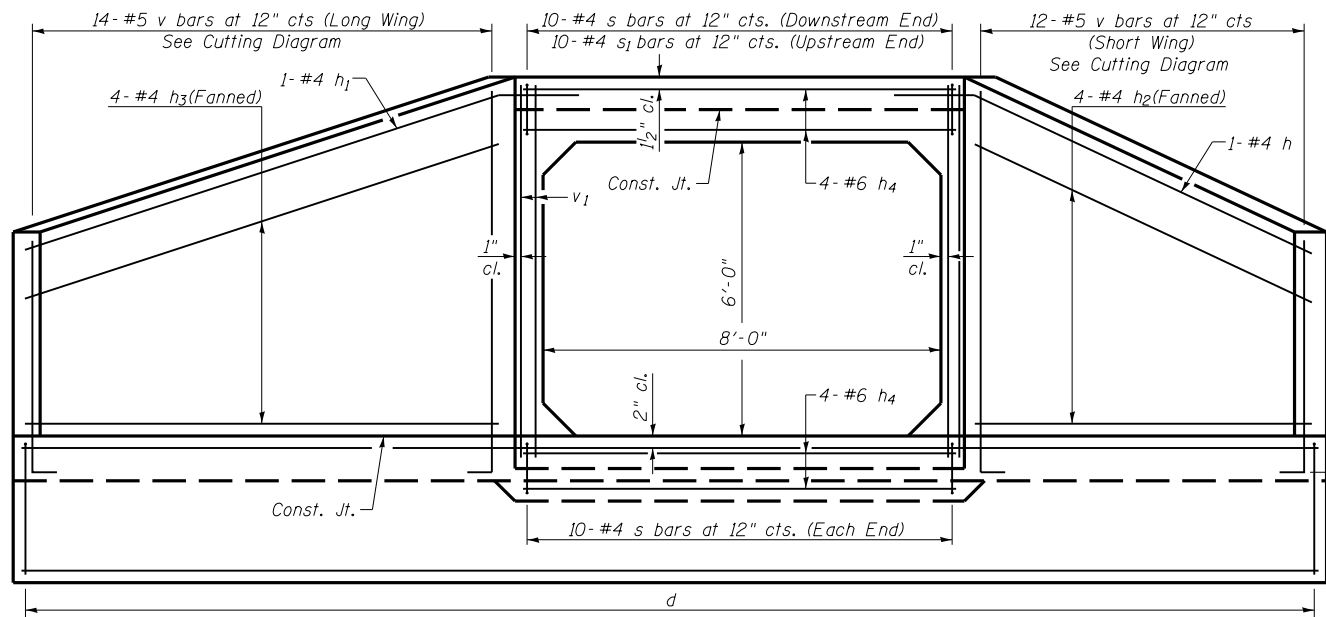
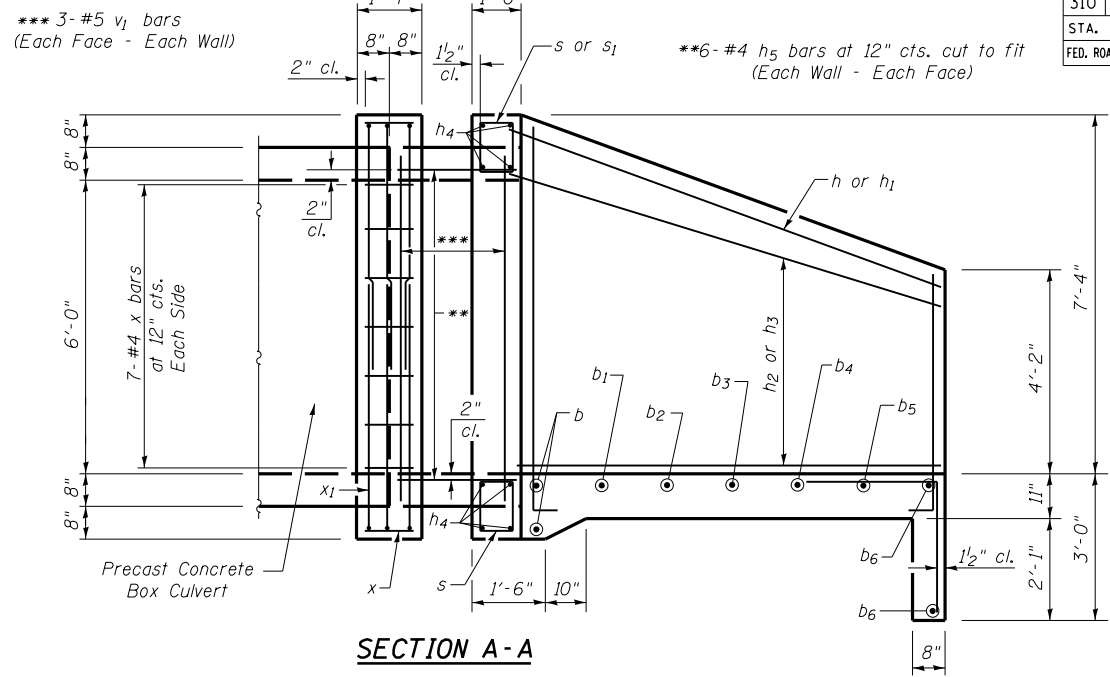


F.A.P. RTE.	SECTION	COUNTY	TOTAL SHEETS	SHEET NO.
310	69-3(3HB)	MORGAN	793	362
STA.		TO STA.		
FED. ROAD DIST. NO.		ILLINOIS FED. AID PROJECT		

Mar-30-2011 09:41:00AM



END ELEVATION



SECTION A-A

NOTES:

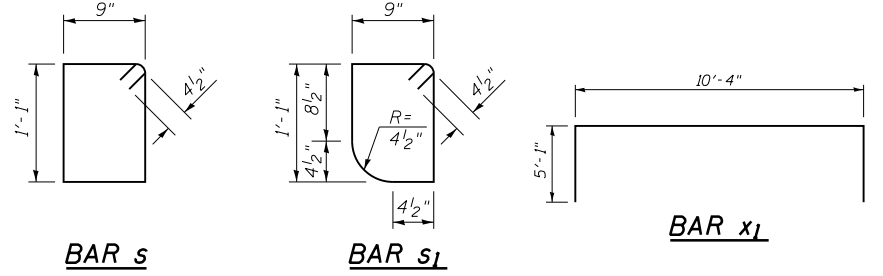
- Bill of Material for 2 end sections.
- Bar dimensions are out to out.
- Not to scale or proper orientation.
- Exposed edges shall be beveled 3/4".
- Reinforcement bars shall conform to the requirements of ASTM A706 Gr 60. See Special Provisions.
- Headwall at 10° skew to culvert centerline.
- Minimum bar laps:
#4 bar = 1'-9"

BILL OF MATERIAL

Bar	No.	Size	Length	Shape
a	12	#6	9'-0"	—
b	4	#4	10'-3"	—
b1	2	#4	13'-2"	—
b2	2	#4	16'-0"	—
b3	2	#4	18'-11"	—
b4	2	#4	21'-9"	—
b5	2	#4	24'-8"	—
b6	4	#4	26'-6"	—
d	38	#4	5'-4"	┘
h	2	#4	14'-0"	┘
h1	2	#4	16'-3"	┘
h2	8	#4	11'-10"	┘
h3	8	#4	13'-11"	┘
h4	16	#6	8'-9"	┘
h5	32	#4	3'-2"	┘
s	30	#4	4'-5"	□
s1	10	#4	4'-3"	□
v	52	#5	16'-8"	┘
v1	24	#5	7'-0"	┘
x	72	#4	1'-0"	┘
x1	12	#4	20'-6"	┘
Reinforcement Bars			Pound	2,390

*10- #4 h5 bars at 12" cts. cut to fit Bottom (Top Slab) Top (Bottom Slab)

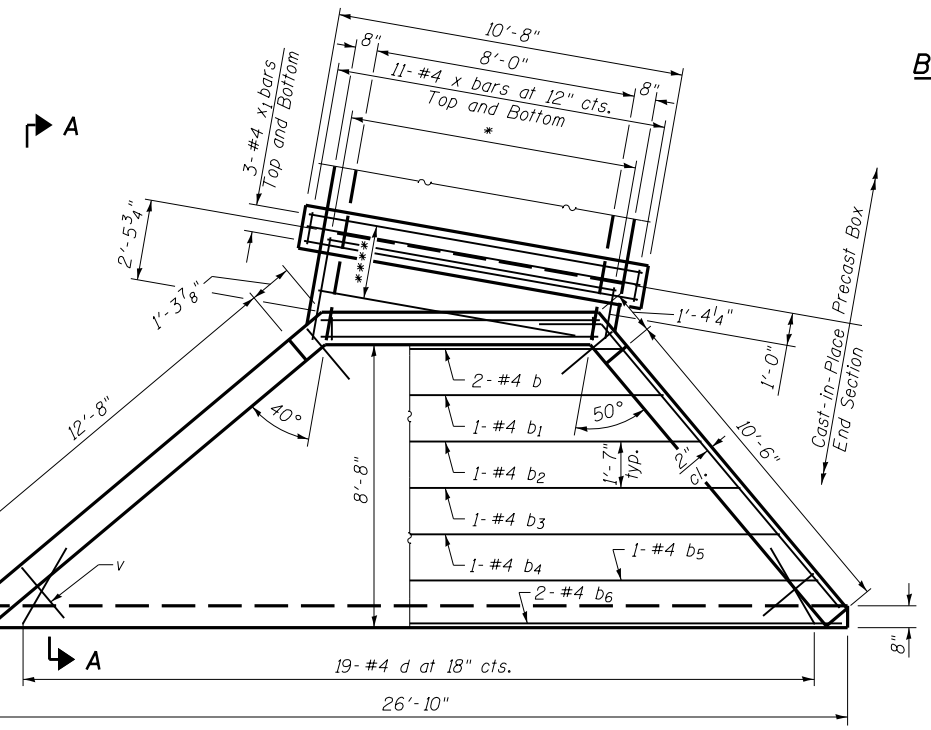
**** 3- #6 a bars cut to fit Bottom (Top Slab) Top (Bottom Slab)



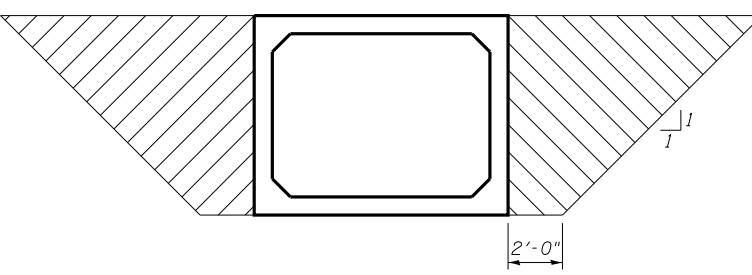
BAR s

BAR s1

BAR x1

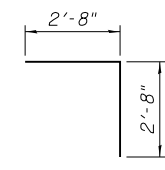


PLAN

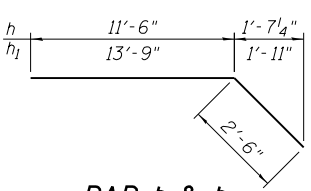


GRANULAR CULVERT BACKFILL DETAIL

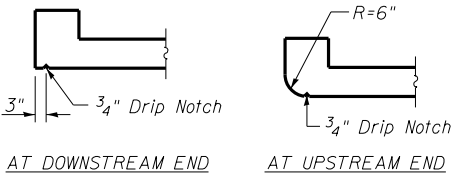
Note:
The Granular Culvert backfill shall extend 2'-0" from the end of each wingwall.



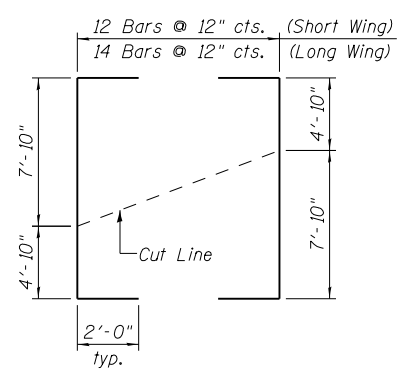
BAR d



BAR h & h1
(Bend in field)



SECTION THRU HEADWALL



FIELD CUTTING DIAGRAM
BAR v

REVISIONS	
NAME	DATE

ILLINOIS DEPARTMENT OF TRANSPORTATION
CULVERT DETAILS
 STATION 292+61.00
 TR 18 (HART'S GRAVEL ROAD)
 DRAWN BY
 CHECKED BY
 DATE

\$ FILE \$