

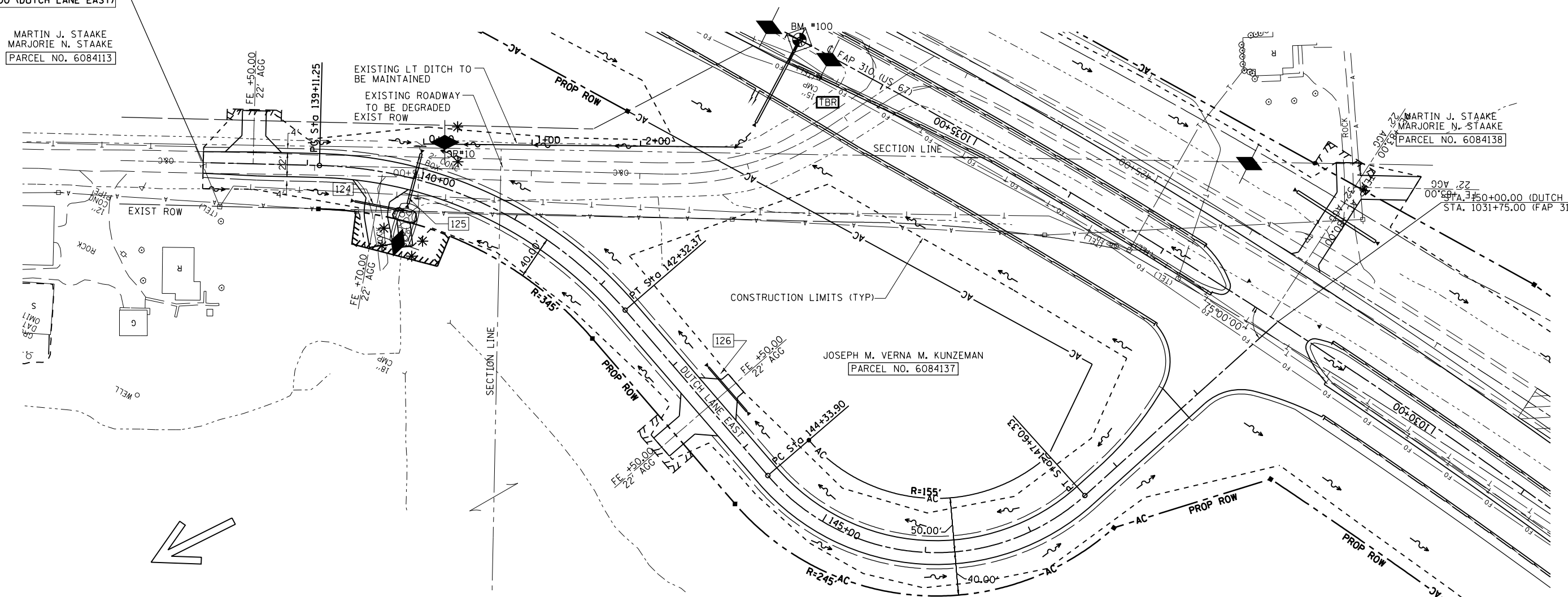
BEGIN IMPROVEMENTS
STA. 138+04.00 (DUTCH LANE EAST)

MARTIN J. STAAKE
MARJORIE N. STAAKE
PARCEL NO. 6084113

MARTIN J. STAAKE
MARJORIE N. STAAKE
PARCEL NO. 6084138

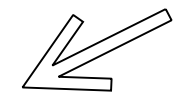
JOSEPH M. VERNA M. KUNZEMAN
PARCEL NO. 6084137

STA. 150+00.00 (DUTCH LANE EAST)
STA. 1031+75.00 (FAP 310 US 67)



PROP. CURVE C40
PI STA. = 140+81.82
 $\Delta = 47^\circ 47' 21''$ (RT)
D = 14' 52' 55"
R = 385.00'
T = 170.57'
L = 321.12'
E = 36.09'
e = 0.060
P.C. STA. = 139+11.25
P.T. STA. = 142+32.37
S.E. TRANSITION
STA 138+04.00 TO STA 139+47.00
STA 141+97.00 TO STA 143+40.00

PROP. CURVE C41
PI STA. = 146+43.37
 $\Delta = 91^\circ 14' 04''$ (LT)
D = 27' 56' 57"
R = 205.00'
T = 209.47'
L = 326.43'
E = 88.09'
e = 0.040
P.C. STA. = 144+33.90
P.T. STA. = 147+60.33
S.E. TRANSITION
STA 143+60.00 TO STA 144+55.00
STA 147+39.00 TO STA 148+34.00



SCALE: 1" = 50'

FILE NAME =	USER NAME = Sparksgw	DESIGNED -	REVISED -
c:\pwwork\pwwork\sparksgw\10264875\EC...	sideroads1-14.dgn	DRAWN -	REVISED -
PLOT SCALE = 100.0000' / in.	CHECKED -	REVISED -	REVISED -
PLOT DATE = Mar-30-2011 09:45:06AM	DATE -	REVISED -	REVISED -

STATE OF ILLINOIS
DEPARTMENT OF TRANSPORTATION

STORM WATER POLLUTION
PREVENTION PLAN

SCALE: SHEET NO. OF SHEETS STA. TO STA.

F.A.P. RTE.	SECTION	COUNTY	TOTAL SHEETS	SHEET NO.
310	69-3	MORGAN	793	425
CONTRACT NO. 72667				
FED. ROAD DIST. NO. ILLINOIS FED. AID PROJECT				