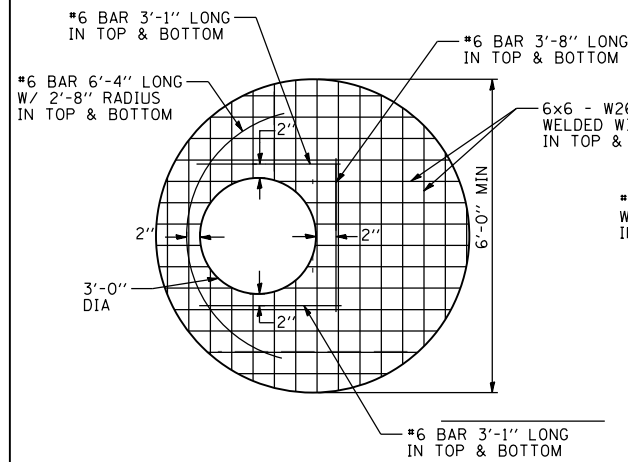
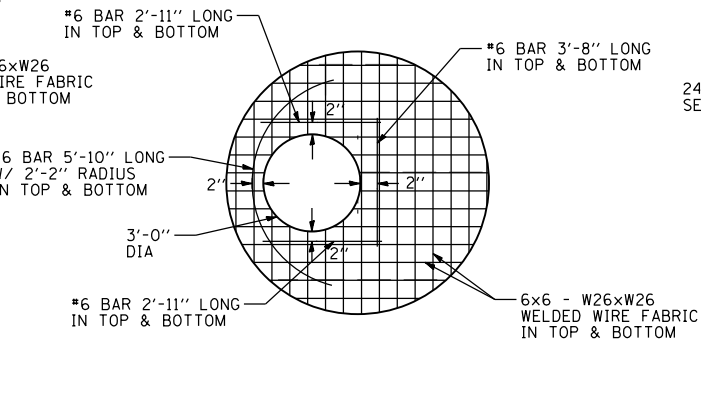


F.A.P. RTE.	SECTION	COUNTY	TOTAL SHEETS	SHEET NO.
310	69-3(3HB)	MORGAN	793	438
STA.		TO STA.		
FED. ROAD DIST. NO.	ILLINOIS	FED. AID PROJECT		

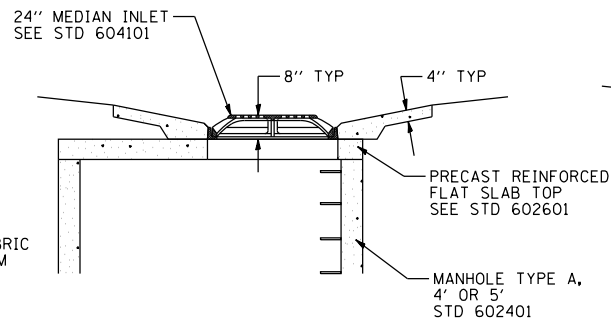
9:45:38 AM  
Mar-30-2011 09:45:38AM



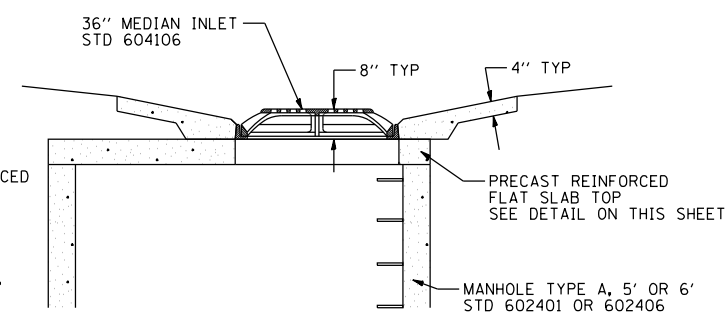
**6' FLAT SLAB TOP DETAIL WITH 36" OPENING**



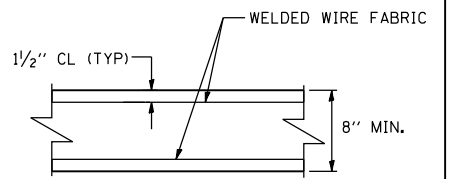
**5' FLAT SLAB TOP DETAIL WITH 36" OPENING**



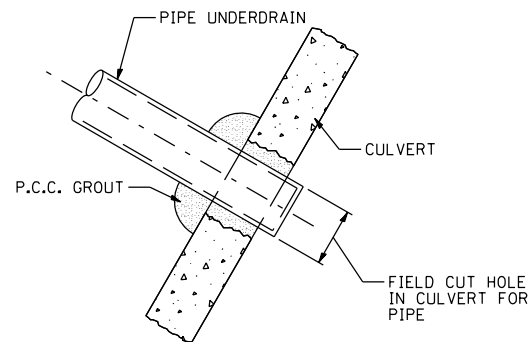
**DETAIL OF STANDARD 24" MEDIAN INLET OF FLAT SLAB TOP**



**DETAIL OF STANDARD 36" MEDIAN INLET OF FLAT SLAB TOP**

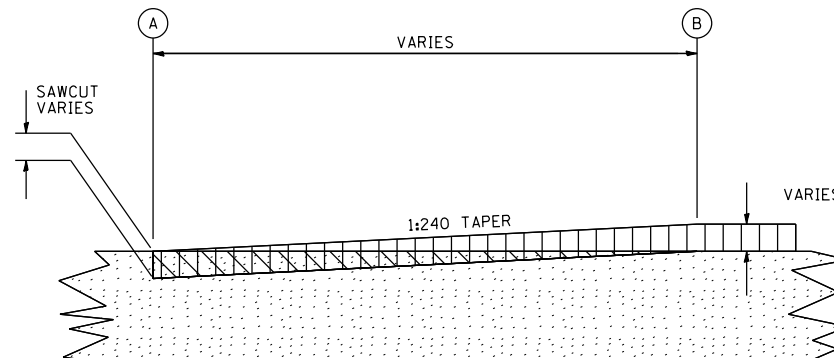


**TYPICAL SLAB TOP SECTION FOR 5' OR 6' MANHOLES**



**DETAIL OF PLACING PIPE IN CULVERT**

NOTE: COST OF PLACING PIPE IN CULVERT SHALL BE INCLUDED IN THE PAY ITEM FOR THE PIPE UNDERDRAIN.



- PROPOSED HOT-MIX ASPHALT SURFACE REMOVAL - BUTT JOINT
- PROPOSED HOT-MIX ASPHALT SURFACE COURSE
- EXISTING HOT-MIX ASPHALT PAVEMENT OR OVERLAY

LOCATION	A	B
EX US 67 / IL 104	97+55.0	97+85.0
EX US 67 / IL 104	2+55.0	3+00.0
EX US 67 / IL 104	556+00.0	556+45.0
TRANSITION C	61+20.4	61+75.4
US 67 FRONTAGE RD	53+65.0	54+20.0
COOPER STREET	442+65.0	443+45.0

**BUTT JOINT DETAIL**

REVISIONS	
NAME	DATE

ILLINOIS DEPARTMENT OF TRANSPORTATION  
MISCELLANEOUS DETAILS  
FAP 310 (US 67/IL 104)

DATE 9/06  
DRAWN BY EBB  
CHECKED BY

\$FILE\$