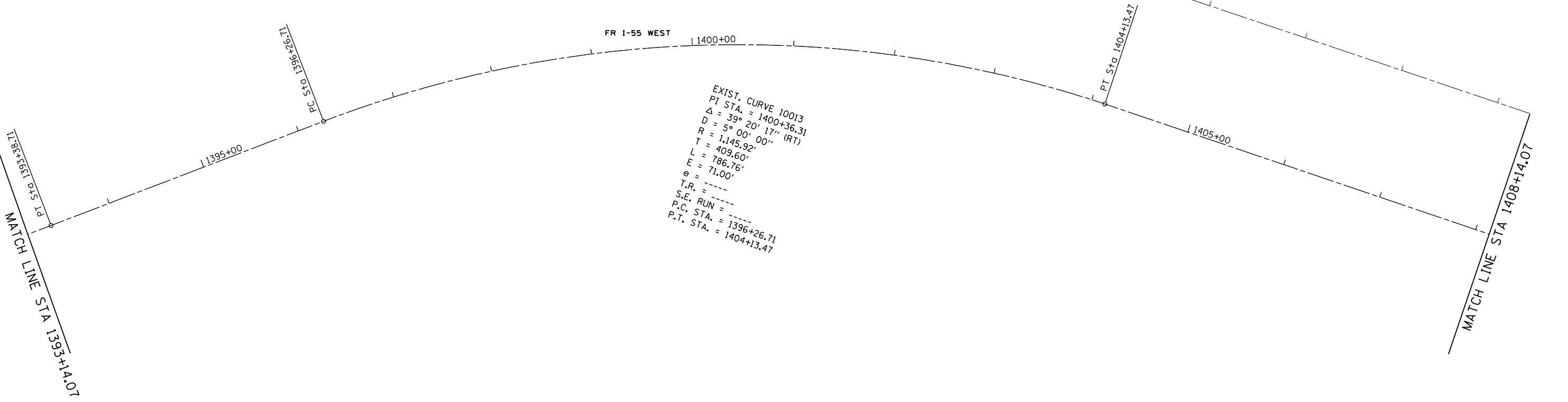
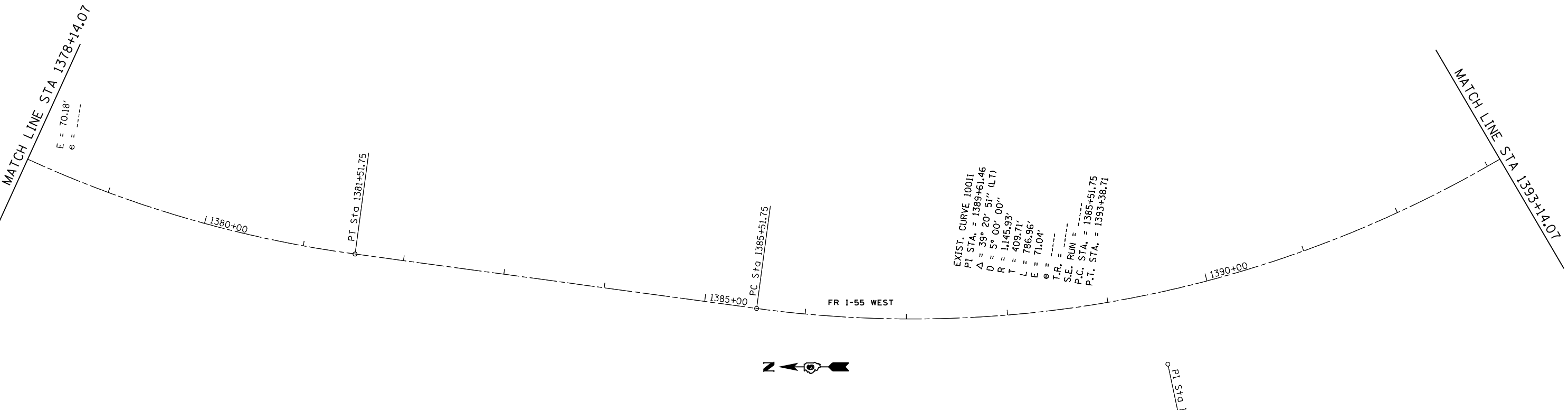


MATCH LINE STA 1378+14.07
 E = 70.18'
 e = -----

MATCH LINE STA 1393+14.07

EXIST. CURVE 10011
 PI STA. = 1389+61.46
 Δ = 39° 20' 51" (L.T)
 D = 5° 00' 00"
 R = 1,145.93'
 T = 409.71'
 L = 786.96'
 E = 71.04'
 e = -----
 T.R. = -----
 S.E. RUN = -----
 P.C. STA. = 1385+51.75
 P.T. STA. = 1393+38.71



EXIST. CURVE 10013
 PI STA. = 1400+36.31
 Δ = 39° 20' 17" (RT)
 D = 5° 00' 00"
 R = 1,145.92'
 T = 409.60'
 L = 786.76'
 E = 71.00'
 e = -----
 T.R. = -----
 S.E. RUN = -----
 P.C. STA. = 1396+26.71
 P.T. STA. = 1404+13.47

FILE NAME =	USER NAME = Sparksgw	DESIGNED -	REVISED -
ei:\pwork\pwork\pwork\sparksgw\10229974\10672093-sht-plan41.dgn		DRAWN -	REVISED -
PLOT SCALE = 100.0000' / in.		CHECKED -	REVISED -
PLOT DATE = Apr-26-2011 11:02:00AM		DATE -	REVISED -

**STATE OF ILLINOIS
 DEPARTMENT OF TRANSPORTATION**

PLAN SHEET			
SCALE:	SHEET NO.	OF SHEETS	STA. TO STA.

F.A.S RTE.	SECTION	COUNTY	TOTAL SHEETS	SHEET NO.
1741	1120	MONTGOMERY	24	10
CONTRACT NO. 72D93				
ILLINOIS FED. AID PROJECT				