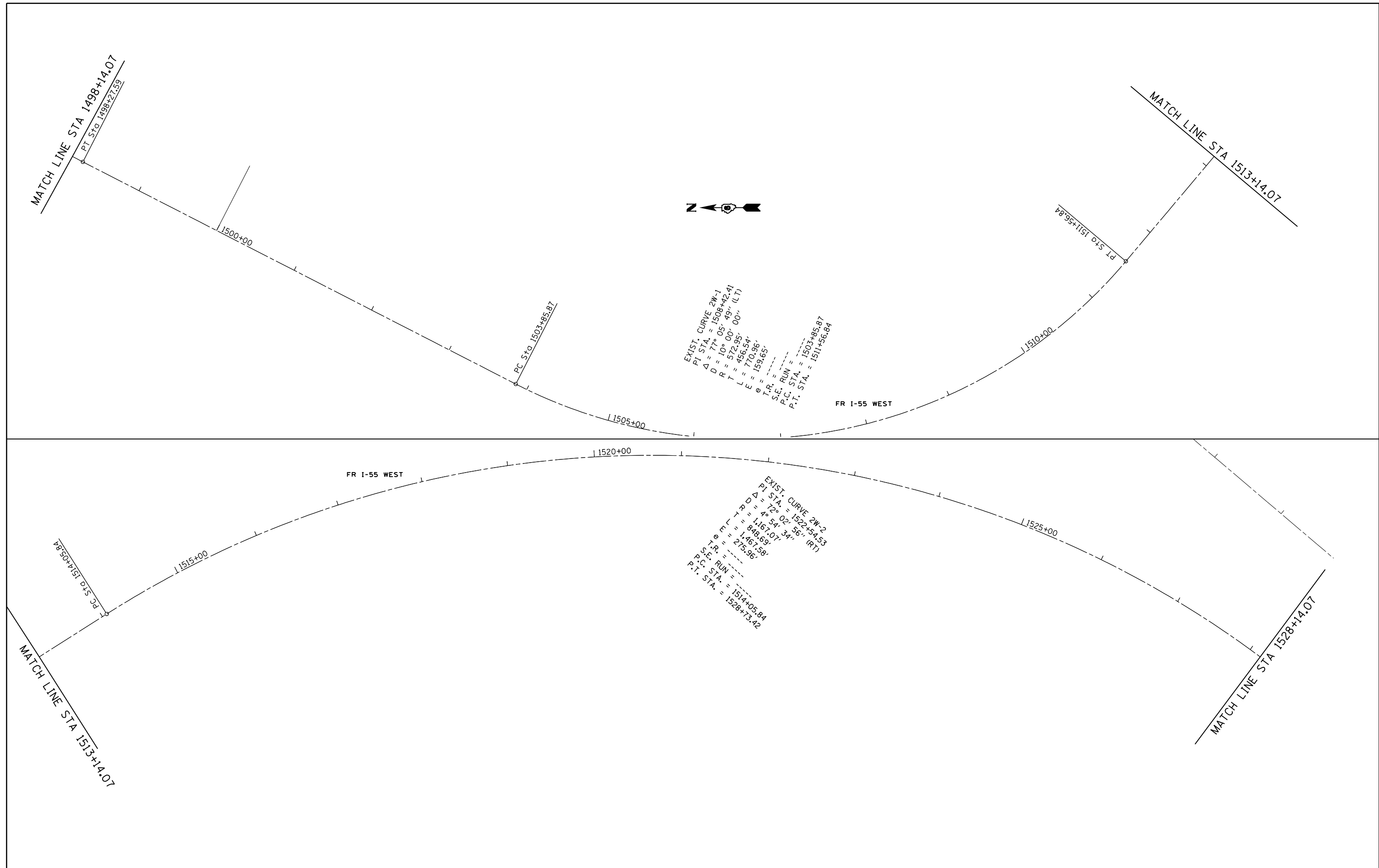




EXIST. CURVE 2W-1
 PI STA. = 1508+42.41
 $\Delta = 7^\circ 05' 49''$ (LT)
 $R = 10^\circ 00' 00''$
 $T = 572.95'$
 $L = 456.34'$
 $E = 153.65'$
 $\theta = 153.65'$
 S.E. RUN =
 P.C. STA. = 1503+85.87
 P.T. STA. = 1511+56.84

EXIST. CURVE 2W-2
 PI STA. = 1522+54.53
 $\Delta = 7^\circ 02' 56''$ (RT)
 $R = 10^\circ 00' 00''$
 $T = 848.69'$
 $L = 1467.07'$
 $E = 275.96'$
 $\theta = 1467.07'$
 S.E. RUN =
 P.C. STA. = 1514+05.84
 P.T. STA. = 1528+73.42



FILE NAME =	USER NAME = sparksgw	DESIGNED -	REVISED -
ei:\pw\work\p1dot\sparksgw\10229974\0672093-sht-plan41.dgn		DRAWN -	REVISED -
PLOT SCALE = 100.0000' / in.		CHECKED -	REVISED -
PLOT DATE = Apr-26-2011 11:02:03AM		DATE -	REVISED -

**STATE OF ILLINOIS
 DEPARTMENT OF TRANSPORTATION**

PLAN SHEET			
SCALE:	SHEET NO.	OF SHEETS	STA. TO STA.

F.A.S. RTE.	SECTION	COUNTY	TOTAL SHEETS	SHEET NO.
1741	1120	MONTGOMERY	24	14
CONTRACT NO. 72D93				
ILLINOIS FED. AID PROJECT				