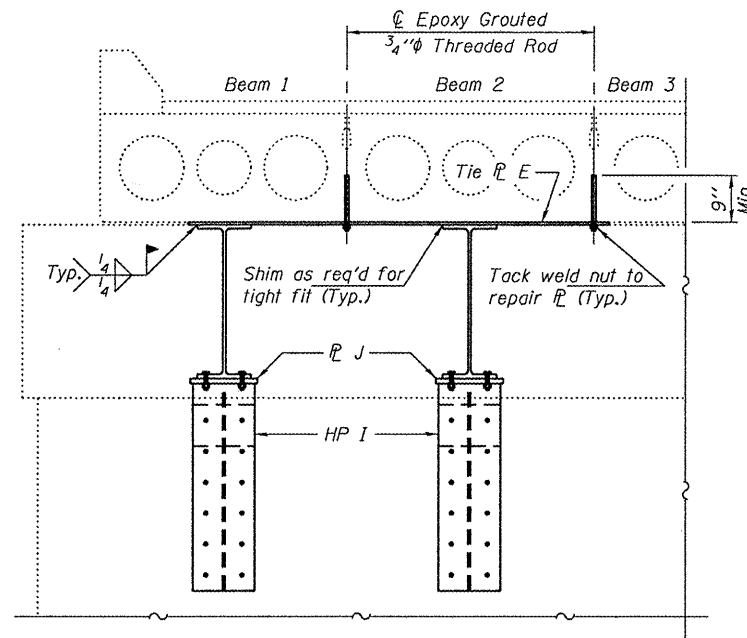
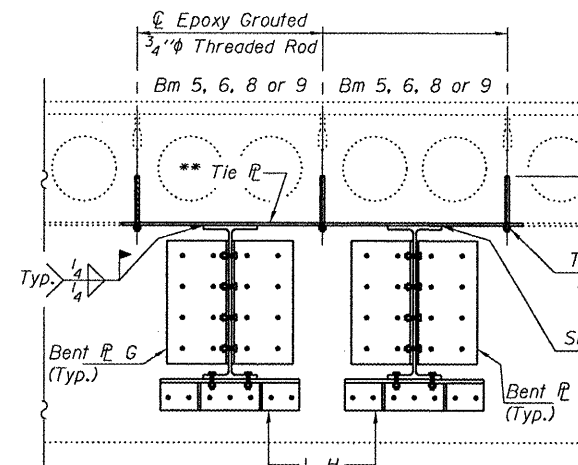


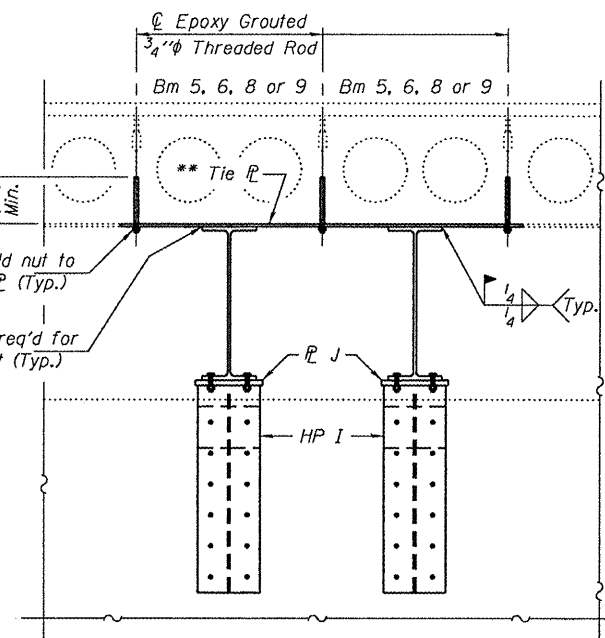
**SECTION THRU SPAN 1,
BEAMS 1 & 2 AT W. ABUT.**



**SECTION THRU SPAN 1,
BEAMS 1 & 2 AT PIER 1**



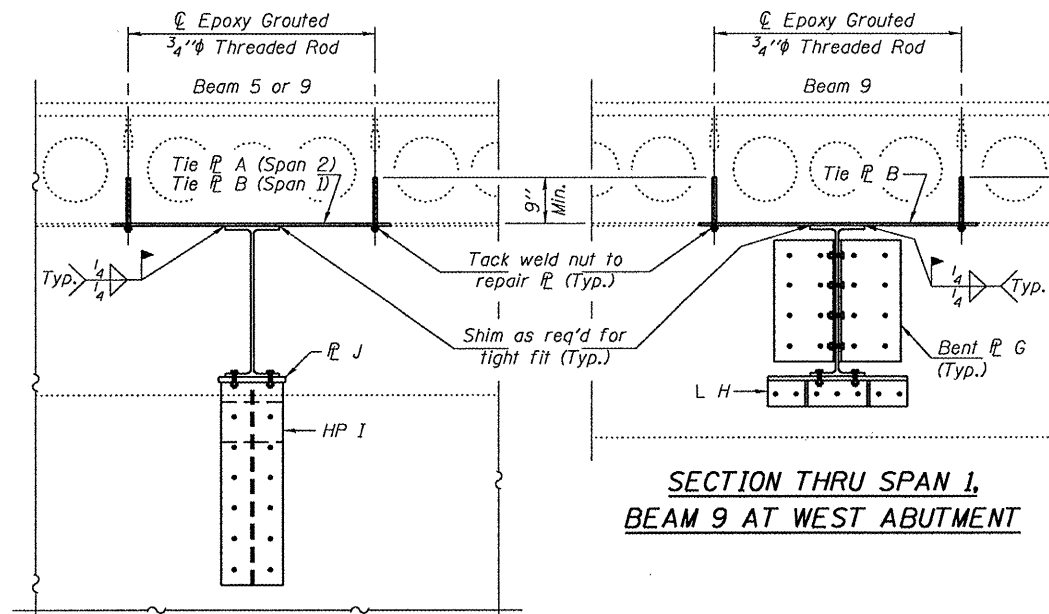
**SECTION THRU SPAN 1, BEAMS 5 & 6
AND SPAN 3, BEAMS 5 & 6 AND
BEAMS 8 & 9 AT ABUTMENTS**



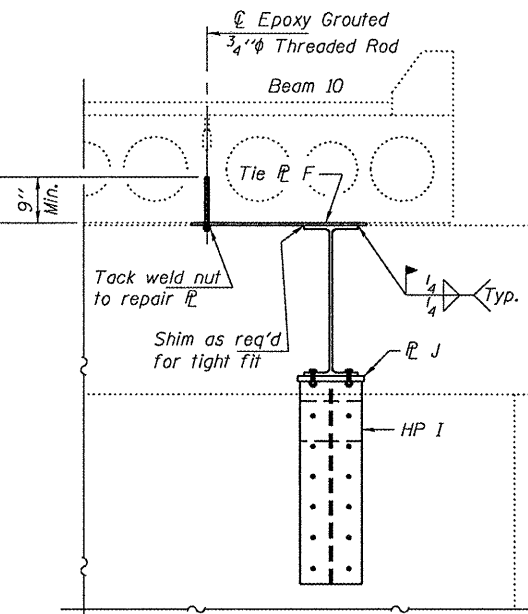
**SECTION THRU SPAN 1, BEAMS 5 & 6
AND SPAN 3, BEAMS 5 & 6 AND
BEAMS 8 & 9 AT PIERS**

* Use holes in Support Beam to field drill holes in L H & R J.

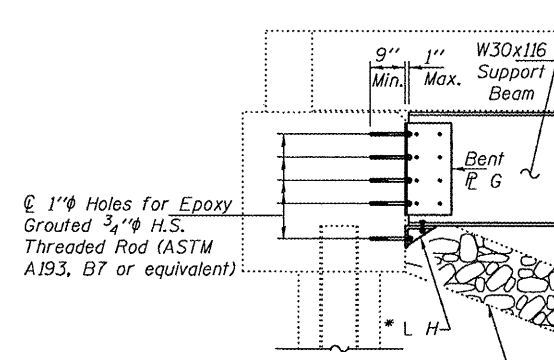
** Tie R C (Spans 1 & 3, Beams 5 & 6)
Tie R D (Span 3, Beams 8 & 9)



**SECTION THRU SPAN 1, BEAM 9
& SPAN 2, BEAM 5 AT PIERS**

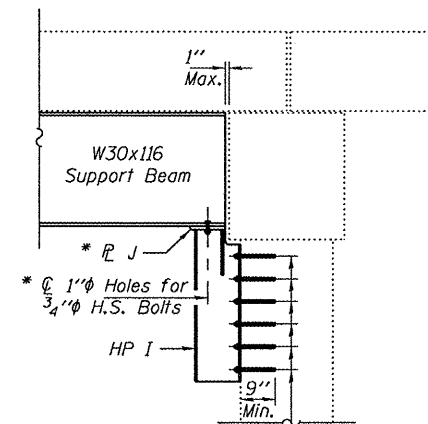


**SECTION THRU SPAN 2,
BEAM 10 AT PIERS**



Excavate riprap as required to facilitate installation of W30x116 Support Beam. Cost included with Furnishing & Erecting Structural Steel. (Typical at each abutment.)

TYPICAL SECTION THRU ABUT.



Excavate riprap as required to facilitate installation of W30x116 Support Beam. Cost included with Furnishing & Erecting Structural Steel. (Typical at each pier.)

TYPICAL SECTION THRU PIERS

DESIGNED - ADY	EXAMINED	DATE - MAY 9, 2011
CHECKED - ATH	<i>Jaime F. Jaffe</i> ACTING ENGINEER OF STRUCTURAL SERVICES	
DRAWN - Kyle M. Steffen	PASSED	
CHECKED - ADY ATH	<i>Carl Pappas</i> ACTING ENGINEER OF BRIDGES AND STRUCTURES	

**STATE OF ILLINOIS
DEPARTMENT OF TRANSPORTATION**

**P.P.C. DECK BEAM SUPPORT DETAILS
SN 054-0008**

SHEET NO. 2 OF 3 SHEETS

F.A.P. RTE.	SECTION	COUNTY	TOTAL SHEETS	SHEET NO.
717	D6 BRIDGE SUPPORT 2011	LOGAN	6	5
CONTRACT NO. 72E50			ILLINOIS FED. AID PROJECT	