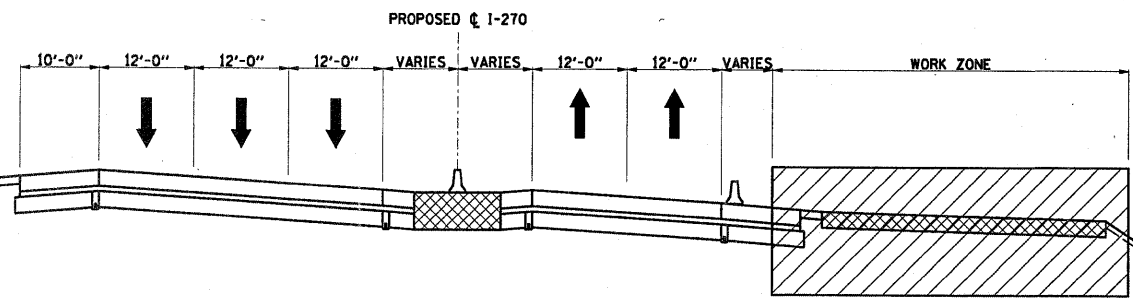
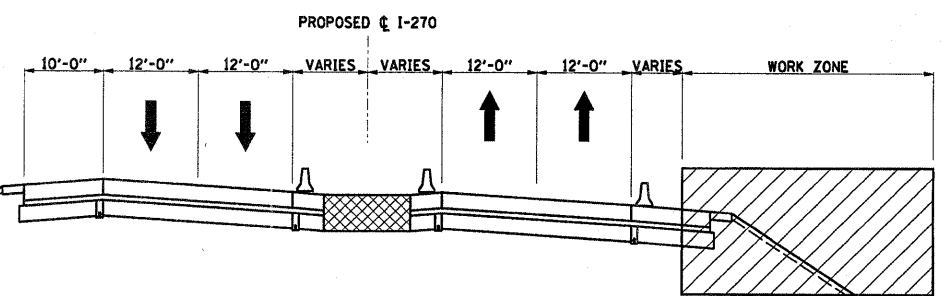


ALL REFERENCES TO PROPOSED WATERWORKS ROAD SHALL BE DELETED FROM THIS PROJECT. SEE SPECIAL PROVISION "TEMPORARY ACCESS TO WATERWORKS ROAD" FOR DETAILS.



PROPOSED I-270 STAGE 6
EAST END SECTION
APPROXIMATE STA 1223+00 TO STA 1234+00



PROPOSED I-270 STAGE 7
EAST END SECTION
APPROXIMATE STA 1121+00 TO STA 1234+00

- MOT LEGEND**
- WORK ZONE AREA
 - TEMPORARY PAVEMENT
 - DIRECTION OF TRAFFIC
 - MOVEABLE CONCRETE BARRIER
 - TYPE II WITH STEADY BURNING MONODIRECTIONAL LIGHT

- EXISTING LEGEND**
- ① EX HOT-MIX ASPHALT OVERLAY
 - ② EX PCC PAVEMENT, 10"
 - ③ EX HOT-MIX ASPHALT SHOULDER
 - ④ EX AGGREGATE SHOULDER
 - ⑤ EX STEEL PLATE BEAM GUARDRAIL
 - ⑥ EX CABLE ROAD GUARD

NOTE:
SEE SUGGESTED MAINTENANCE OF TRAFFIC PLANS FOR ADDITIONAL INFORMATION.

FILE NAME = 0876A91-Sht-MOTYP08.DGN	USER NAME = molopez	DESIGNED - SJM	REVISED - 06-30-10	STATE OF ILLINOIS DEPARTMENT OF TRANSPORTATION	SUGGESTED MAINTENANCE OF TRAFFIC TYPICAL SECTIONS - STAGE 6 AND 7	F.A.I. RTE. 270	SECTION 60-1B-1	COUNTY MADISON	TOTAL SHEETS 712	SHEET NO. 96A	
PLOT SCALE = \$SCALE\$	CHECKED - SJM	REVISED - 6/7/11 ADD Δ	SCALE:			SHEET NO. 8 OF 8 SHEETS	STA.	TO STA.	CONTRACT NO. 76A91		
PLOT DATE = 3/16/2011	DATE - 06-30-10	REVISED -	ILLINOIS FED. AID PROJECT								