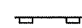



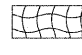

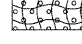
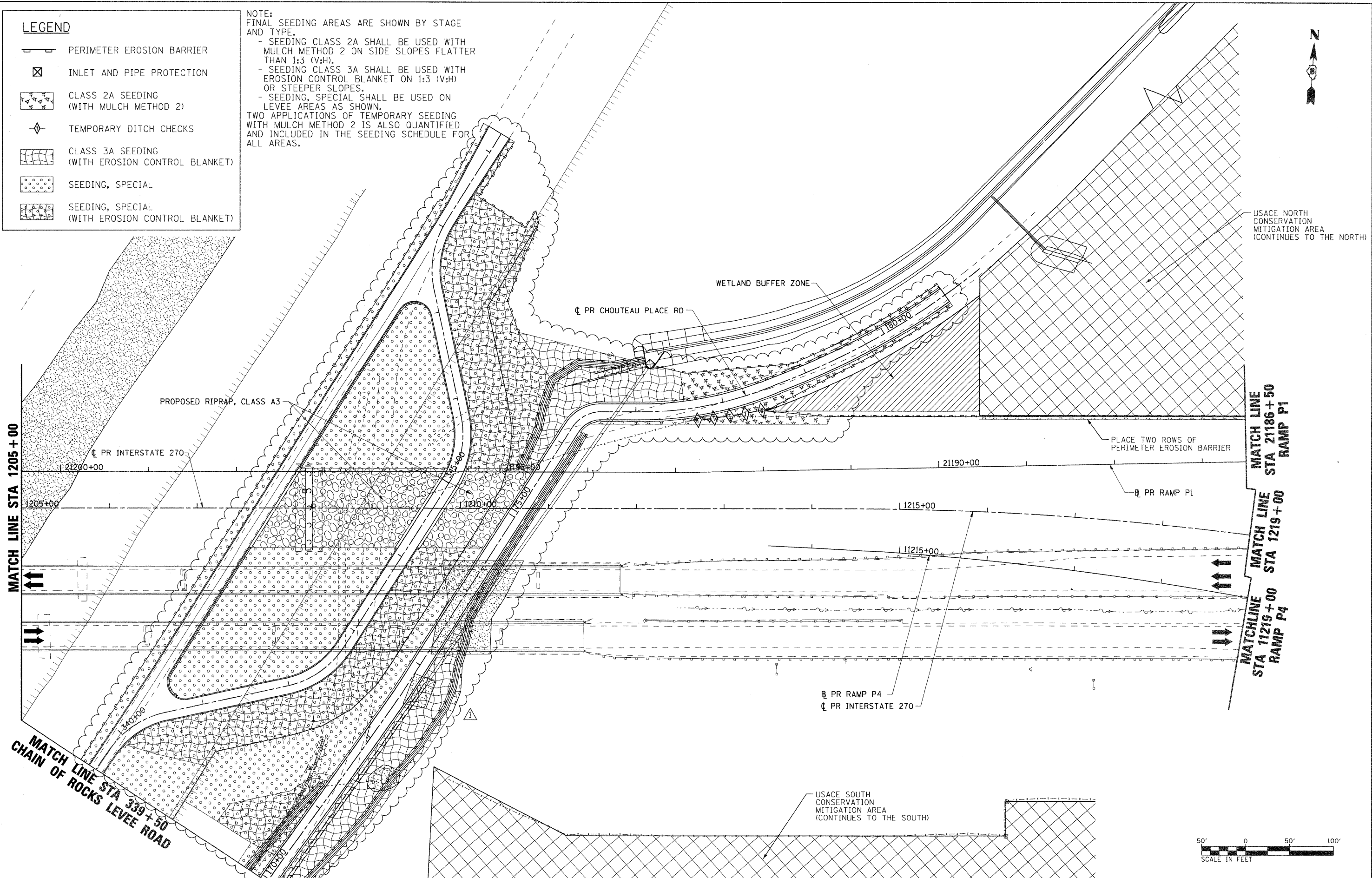


LEGEND

-  PERIMETER EROSION BARRIER
-  INLET AND PIPE PROTECTION
-  CLASS 2A SEEDING
(WITH MULCH METHOD 2)
-  TEMPORARY DITCH CHECKS
-  CLASS 3A SEEDING
(WITH EROSION CONTROL BLANKET)
-  SEEDING, SPECIAL
-  SEEDING, SPECIAL
(WITH EROSION CONTROL BLANKET)

NOTE:
FINAL SEEDING AREAS ARE SHOWN BY STAGE AND TYPE.
- SEEDING CLASS 2A SHALL BE USED WITH MULCH METHOD 2 ON SIDE SLOPES FLATTER THAN 1:3 (V:H).
- SEEDING CLASS 3A SHALL BE USED WITH EROSION CONTROL BLANKET ON 1:3 (V:H) OR STEEPER SLOPES.
- SEEDING, SPECIAL SHALL BE USED ON LEVEE AREAS AS SHOWN.
TWO APPLICATIONS OF TEMPORARY SEEDING WITH MULCH METHOD 2 IS ALSO QUANTIFIED AND INCLUDED IN THE SEEDING SCHEDULE FOR ALL AREAS.



FILE NAME = 0876A91-Sh-Eros-01-05.dgn
VOLKERT

USER NAME = unstitled
DESIGNED - MPW
DRAWN - CJS
CHECKED - PMK
PLOT SCALE = 50.0000' / IN.
PLOT DATE = 5/19/2011

REVISIONS:
- 6/7/11 ADDENDUM
-
-
-
-
DATE - 5/16/2011

**STATE OF ILLINOIS
DEPARTMENT OF TRANSPORTATION**

EROSION CONTROL PLAN - STAGE 1

SCALE: 1" = 50' SHEET NO. 5 OF 38 SHEETS STA. 1205+00 TO STA. 1219+00

F.A.I. RTE. 270	SECTION 60-19-1	COUNTY MADISON	TOTAL SHEETS 712	SHEET NO. 216
CONTRACT NO. 76A91				
ILLINOIS FED. AID PROJECT				