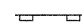

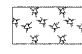
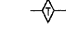
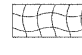

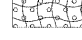
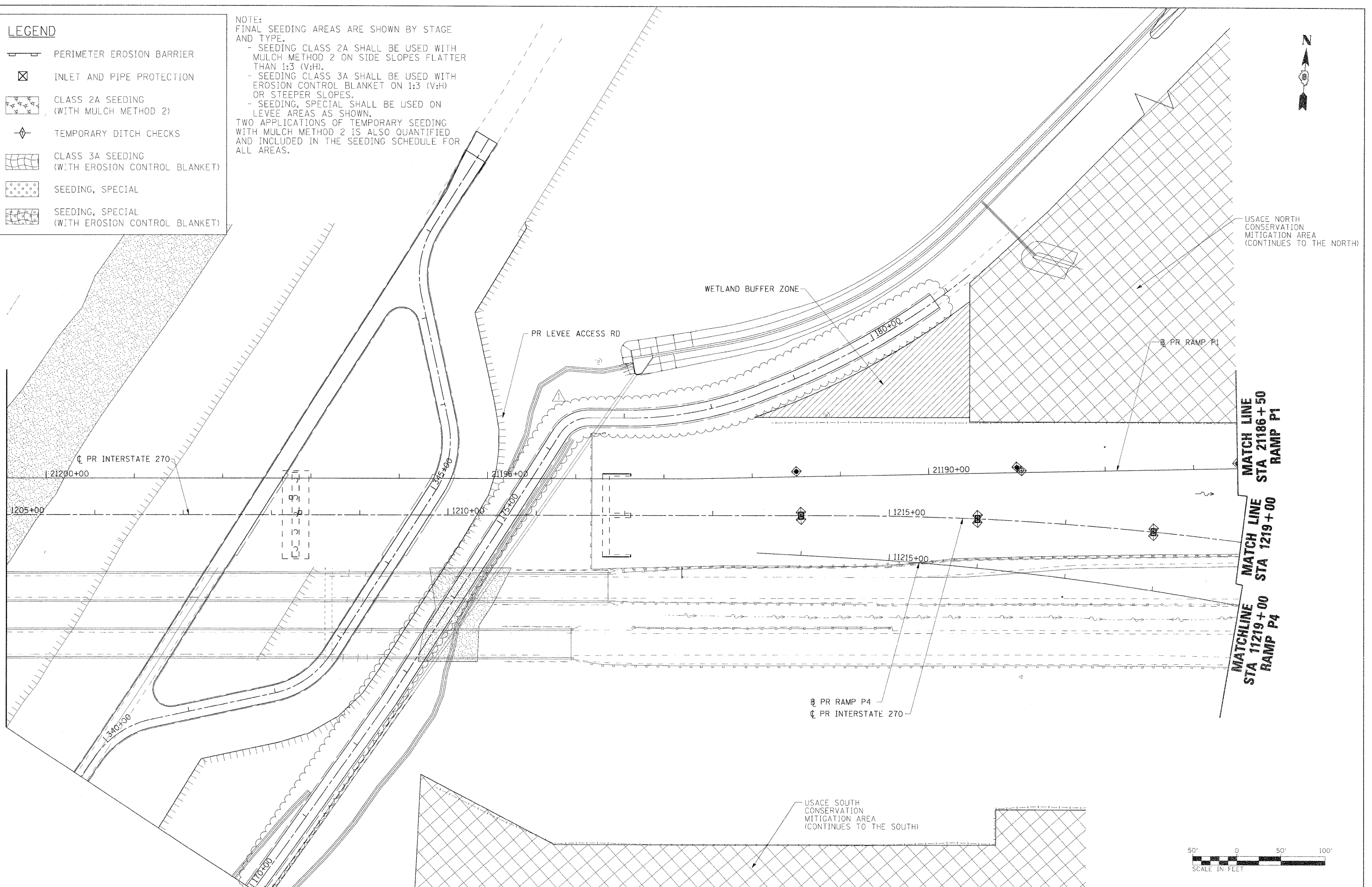


**LEGEND**

-  PERIMETER EROSION BARRIER
-  INLET AND PIPE PROTECTION
-  CLASS 2A SEEDING  
(WITH MULCH METHOD 2)
-  TEMPORARY DITCH CHECKS
-  CLASS 3A SEEDING  
(WITH EROSION CONTROL BLANKET)
-  SEEDING, SPECIAL
-  SEEDING, SPECIAL  
(WITH EROSION CONTROL BLANKET)

NOTE:  
FINAL SEEDING AREAS ARE SHOWN BY STAGE AND TYPE.  
- SEEDING CLASS 2A SHALL BE USED WITH MULCH METHOD 2 ON SIDE SLOPES FLATTER THAN 1:3 (V:H).  
- SEEDING CLASS 3A SHALL BE USED WITH EROSION CONTROL BLANKET ON 1:3 (V:H) OR STEEPER SLOPES.  
- SEEDING, SPECIAL SHALL BE USED ON LEVEE AREAS AS SHOWN.  
TWO APPLICATIONS OF TEMPORARY SEEDING WITH MULCH METHOD 2 IS ALSO QUANTIFIED AND INCLUDED IN THE SEEDING SCHEDULE FOR ALL AREAS.



FILE NAME =  
D878A91-Sht-Eros-02-05.dgn  
**VOLKERT**

USER NAME = untitled  
DESIGNED - MPW  
DRAWN - CJS  
CHECKED - PMK  
DATE - 5/16/2011

REVISED - 6/7/11 ADDENDUM  
REVISED -  
REVISED -  
REVISED -

**STATE OF ILLINOIS  
DEPARTMENT OF TRANSPORTATION**

**EROSION CONTROL PLAN - STAGE 2**

SCALE: 1" = 50' | SHEET NO. 12 OF 38 SHEETS | STA. 1205+00 TO STA. 1219+00

F.A.I. RTE. 270	SECTION 60-1B-1	COUNTY MADISON	TOTAL SHEETS 712	SHEET NO. 223
CONTRACT NO. 76A91				
ILLINOIS FED. AID PROJECT				