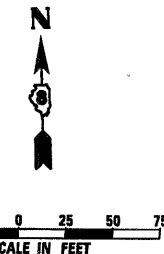
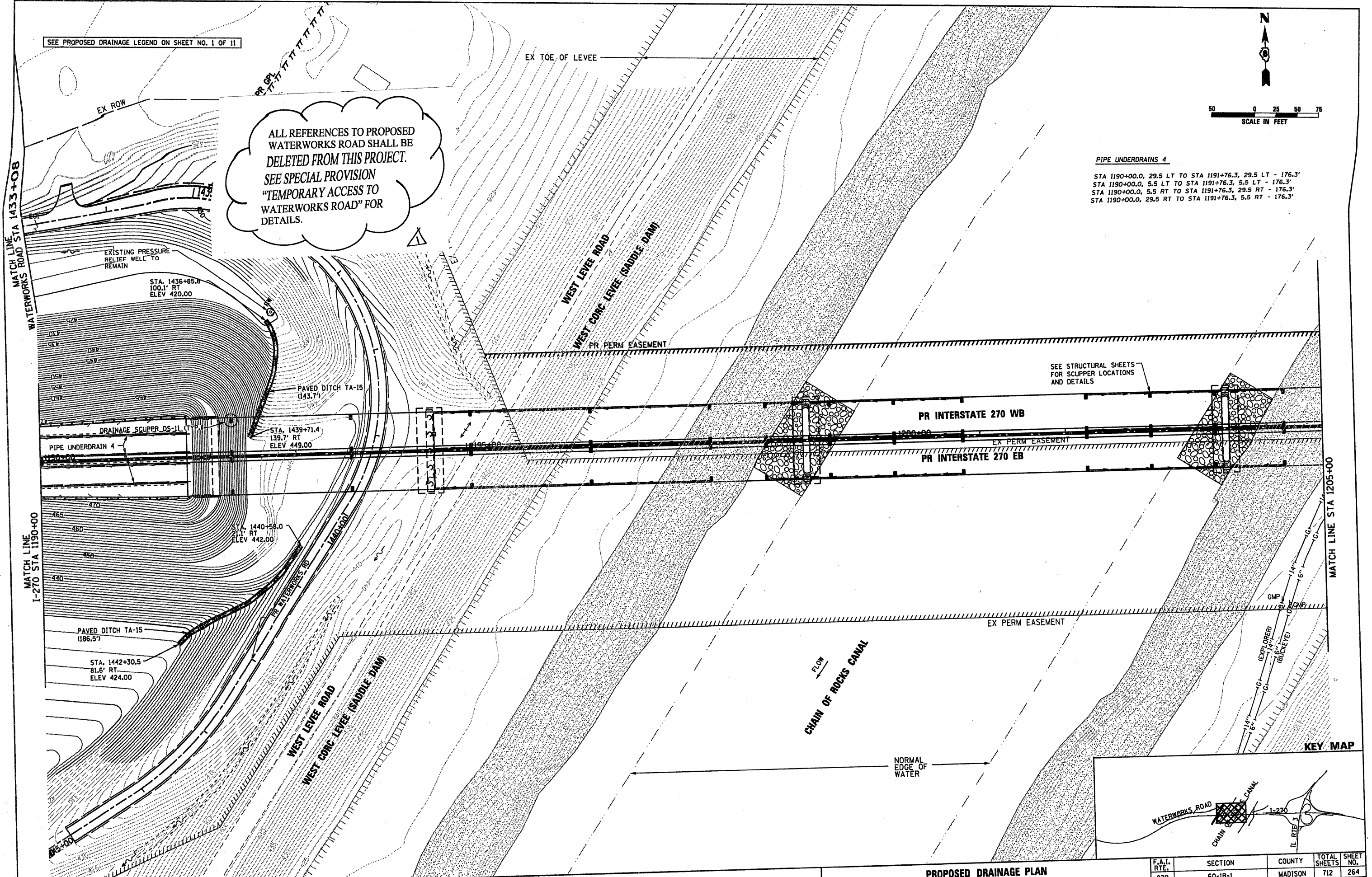


SEE PROPOSED DRAINAGE LEGEND ON SHEET NO. 1 OF 11



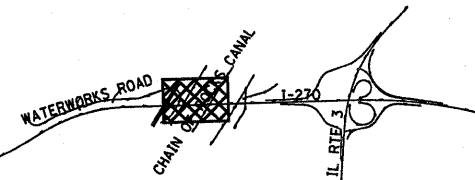
ALL REFERENCES TO PROPOSED WATERWORKS ROAD SHALL BE DELETED FROM THIS PROJECT. SEE SPECIAL PROVISION "TEMPORARY ACCESS TO WATERWORKS ROAD" FOR DETAILS.

PIPE UNDERDRAINS 4
 STA 1190+00.0, 29.5 LT TO STA 1191+76.3, 29.5 LT - 176.3'
 STA 1190+00.0, 5.5 LT TO STA 1191+76.3, 5.5 LT - 176.3'
 STA 1190+00.0, 5.5 RT TO STA 1191+76.3, 29.5 RT - 176.3'
 STA 1190+00.0, 29.5 RT TO STA 1191+76.3, 5.5 RT - 176.3'



SEE STRUCTURAL SHEETS FOR SCUPPER LOCATIONS AND DETAILS

KEY MAP



FILE NAME = 0876A91-Sht-Pr-Drain04.dgn	USER NAME = EDean	DESIGNED - JM	REVISED - 6/7/11 ADD. A
		DRAWN - JM	REVISED -
		CHECKED - MBL	REVISED -
		DATE - 3/18/11	REVISED -

**STATE OF ILLINOIS
 DEPARTMENT OF TRANSPORTATION**

**PROPOSED DRAINAGE PLAN
 INTERSTATE 270**

SCALE: 1" = 50' SHEET NO. 4 OF 11 SHEETS STA. 1190+00 TO STA. 1205+00

F.A.I. RTE. 270	SECTION 60-1B-1	COUNTY MADISON	TOTAL SHEETS 712	SHEET NO. 264
CONTRACT NO. 76A91				
ILLINOIS FED. AID PROJECT				