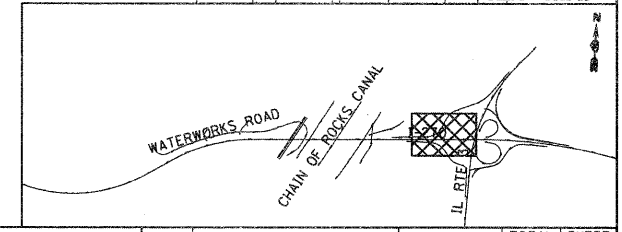
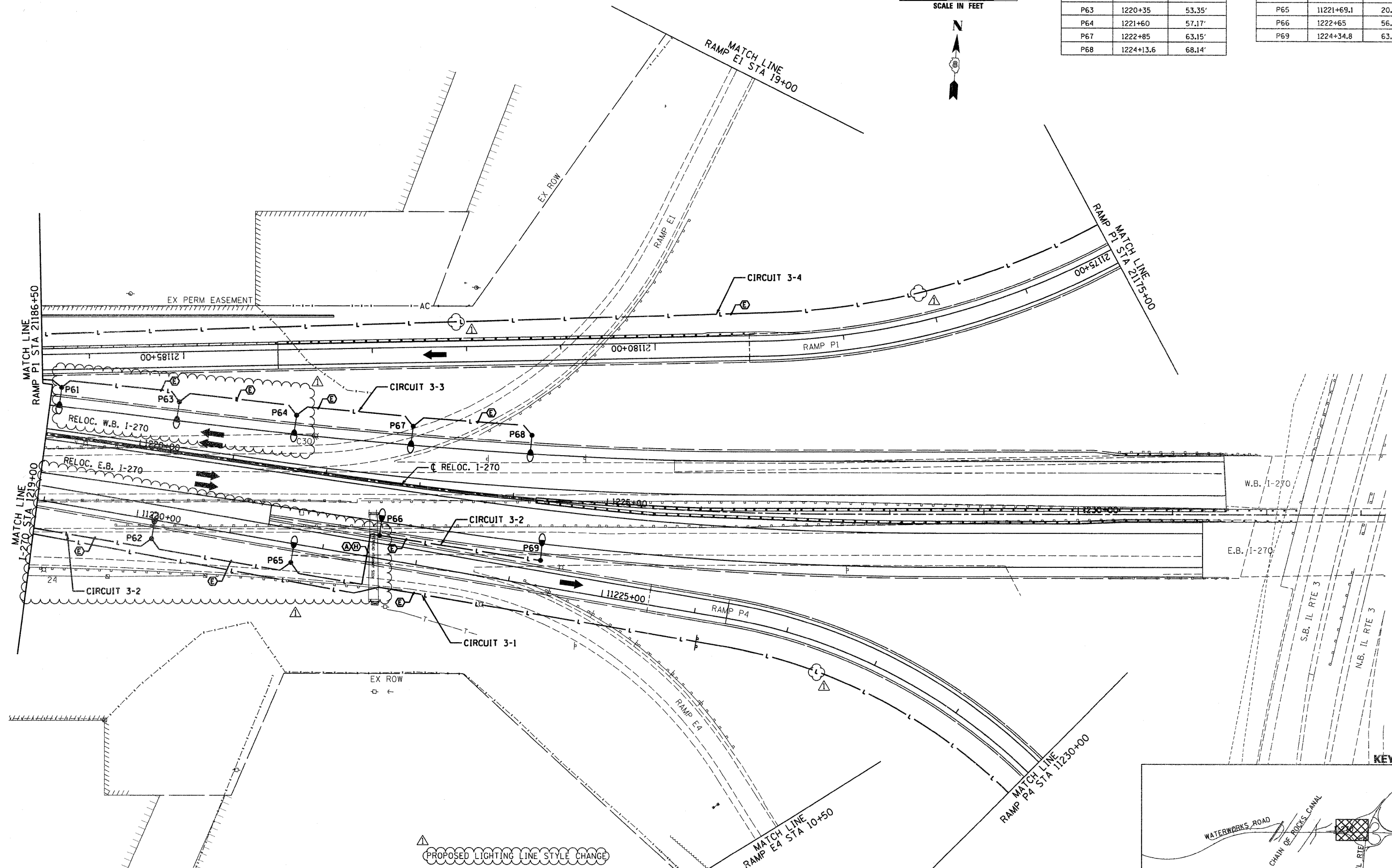
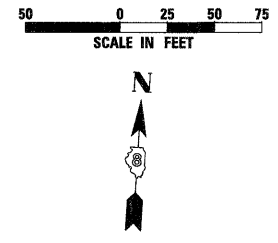


LEFT SIDE LIGHTS		
POLE NO.	STATION	OFFSET
P61	1219+10	50.85'
P63	1220+35	53.35'
P64	1221+60	57.17'
P67	1222+85	63.15'
P68	1224+13.6	68.14'

RIGHT SIDE LIGHTS		
POLE NO.	STATION	OFFSET
P62	11220+19.3	20.00'
P65	11221+69.1	20.00'
P66	1222+65	56.66'
P69	1224+34.8	63.55'



FILE NAME =	USER NAME = #USER#	DESIGNED - FSM	REVISED -	<b>STATE OF ILLINOIS DEPARTMENT OF TRANSPORTATION</b>	<b>HIGHWAY LIGHTING PLANS INTERSTATE 270</b>		FAI	SECTION	COUNTY	TOTAL SHEETS	SHEET NO.	
#FILE#		DRAWN - MNR	REVISED -		270	60-1B-1	MADISON	712	335			
	PLOT SCALE = #SCALE#	CHECKED - AAB	REVISED - 6/7/11 ADDENDUM		SCALE: 1" = 50'		SHEET NO. 7 OF 10 SHEETS		STA. 1219+00 TO STA. 1233+00		CONTRACT NO. 76A91	
	PLOT DATE = #DATE#	DATE - 3/18/11	REVISED -		ILLINOIS FED. AID PROJECT							