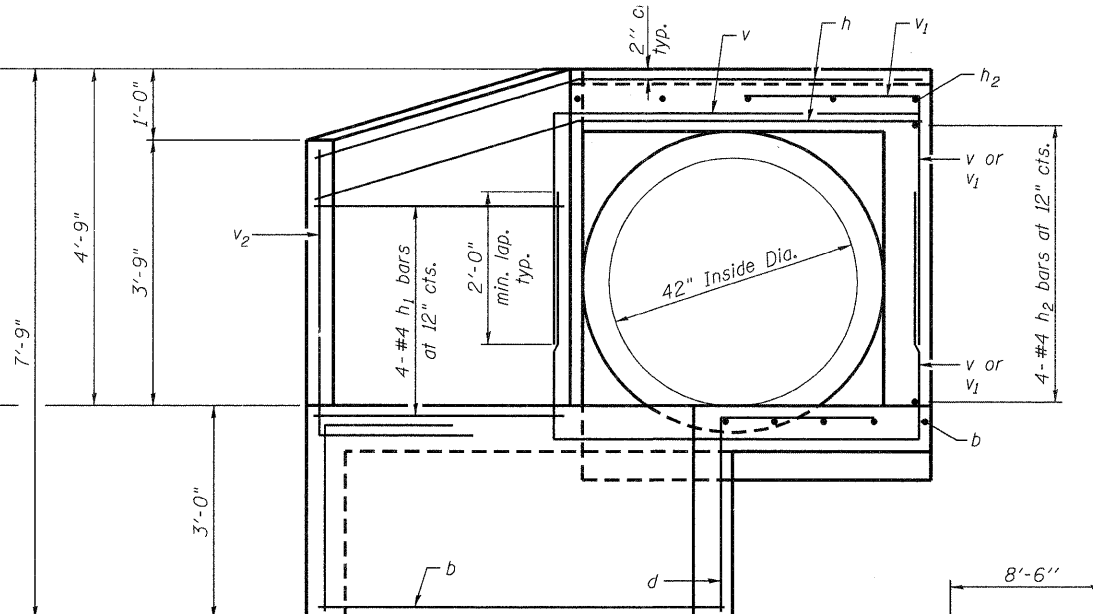
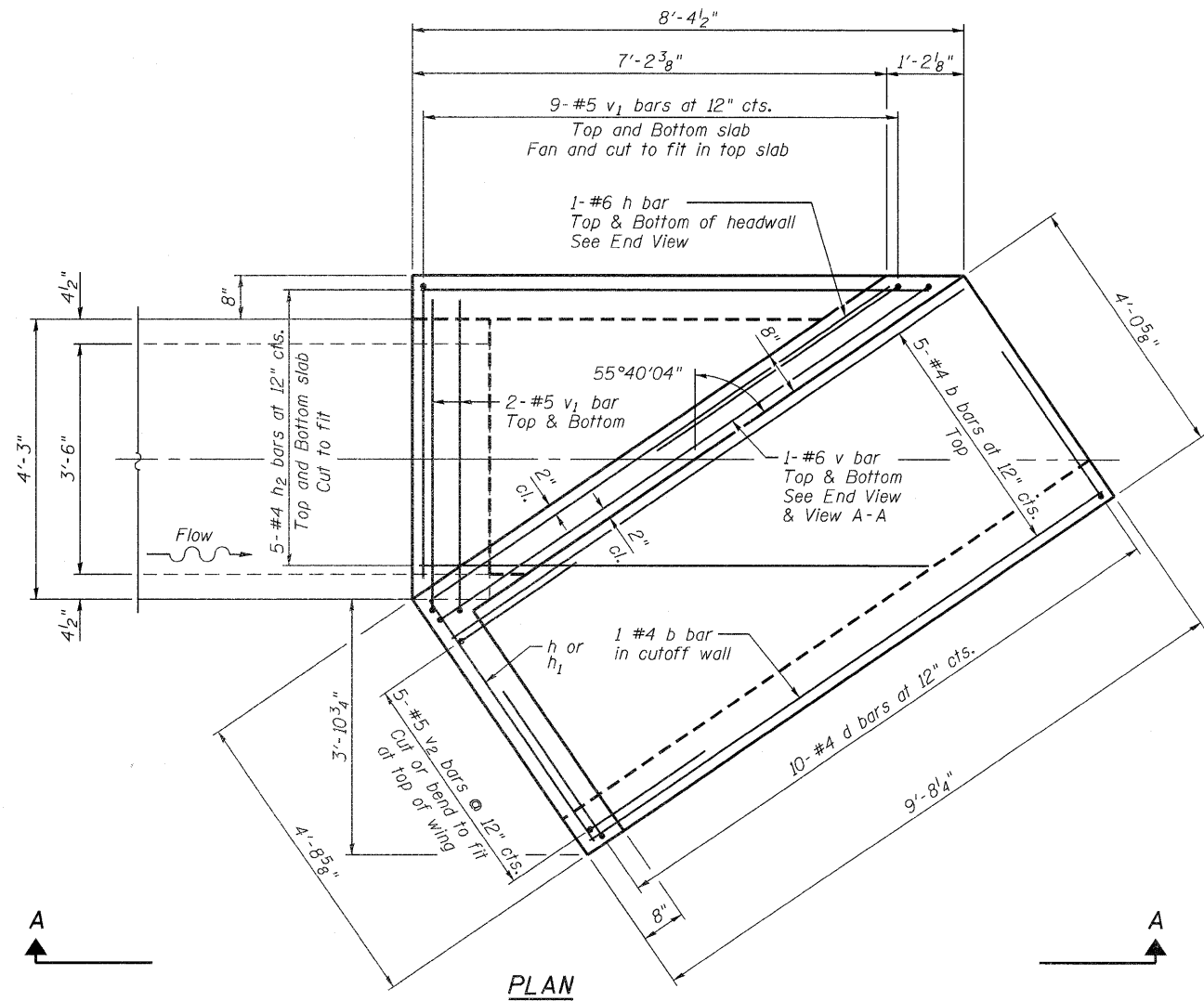


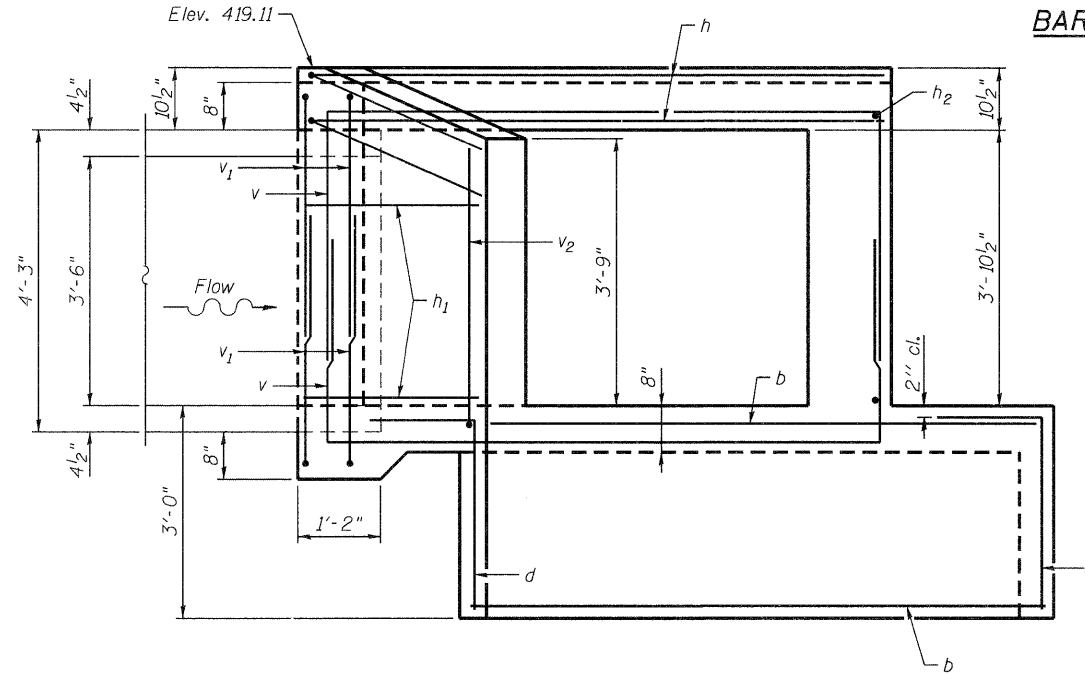
LONGITUDINAL SECTION



END VIEW



PLAN



VIEW A-A

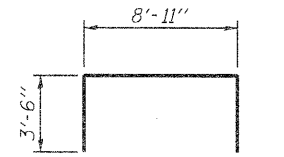
NOTES

Reinforcement bars shall conform to the requirements of ASTM A 706 Gr 60. See Special Provisions.

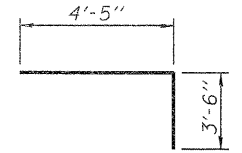
DESIGN STRESSES

$f_y = 60,000$ psi
 $f'_c = 3,500$ psi

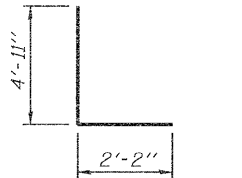
LOADING HS 20-44



BAR v

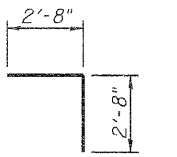


BAR v1



BAR h

BAR v2



BAR d

BILL OF MATERIAL

Bar	No.	Size	Length	Shape
b	6	#4	9'-4"	—
d	10	#4	5'-4"	└
h	2	#6	12'-10"	└
h1	4	#4	4'-4"	—
h2	14	#4	7'-7"	—
v	4	#6	12'-5"	└
v1	22	#5	7'-11"	└
v2	5	#5	7'-1"	L
Reinforcement Bars		Pound	490	
Concrete Box Culverts		Cu. Yd.	4.1	

FILE NAME = ...\\DB76A91-537A-culv.169.50.dgn	USER NAME = .MML.	DESIGNED - MCB	REVISED - 6/7/11 ADDENDUM 1
PLOT SCALE = 2x8 1/4" / IN.	DRAWN - MML	CHECKED - MCB	REVISED -
PLOT DATE = 5/12/2011	CHECKED - MCB	REVISED -	

STATE OF ILLINOIS
DEPARTMENT OF TRANSPORTATION

END SECTION DETAILS - CHOUTEAU PLACE ROAD
STATION 169 + 50

SHEET NO. 1 OF 1 SHEETS

CB Coombe-Bloxdorf P.C.
 - CIVIL ENGINEERS -
 - STRUCTURAL ENGINEERS -
 - LAND SURVEYORS -
 Design Firm License No. 184-002703

F.A.I. RTE. 270	SECTION 60-1B-1	COUNTY MADISON	TOTAL SHEETS 712	SHEET NO. 537A
			CONTRACT NO. 76A91	

ILLINOIS FED. AID PROJECT