



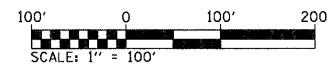
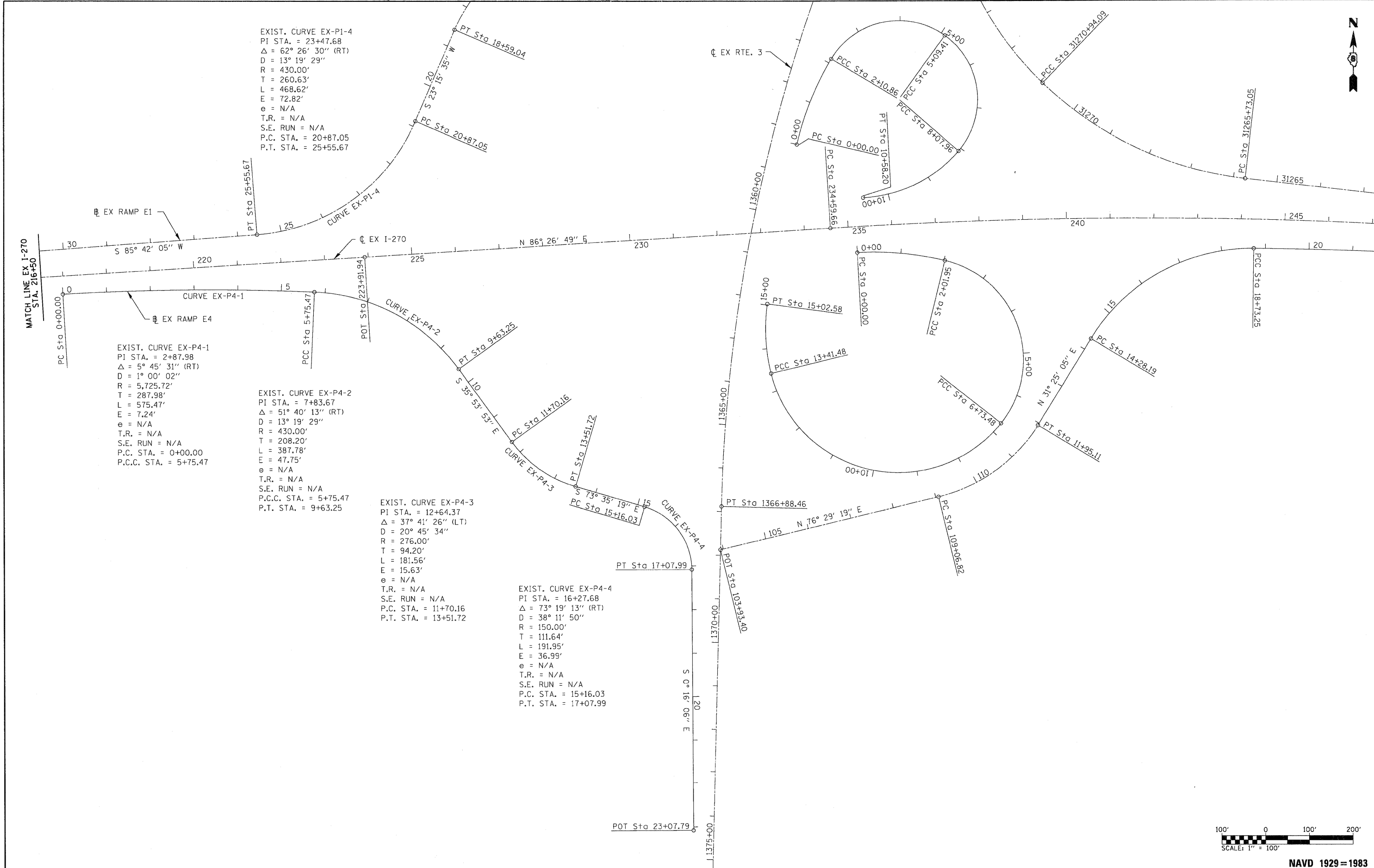
EXIST. CURVE EX-P1-4
 PI STA. = 23+47.68
 $\Delta = 62^\circ 26' 30''$ (RT)
 D = 13° 19' 29"
 R = 430.00'
 T = 260.63'
 L = 468.62'
 E = 72.82'
 e = N/A
 T.R. = N/A
 S.E. RUN = N/A
 P.C. STA. = 20+87.05
 P.T. STA. = 25+55.67

EXIST. CURVE EX-P4-1
 PI STA. = 2+87.98
 $\Delta = 5^\circ 45' 31''$ (RT)
 D = 1° 00' 02"
 R = 5,725.72'
 T = 287.98'
 L = 575.47'
 E = 7.24'
 e = N/A
 T.R. = N/A
 S.E. RUN = N/A
 P.C. STA. = 0+00.00
 P.C.C. STA. = 5+75.47

EXIST. CURVE EX-P4-2
 PI STA. = 7+83.67
 $\Delta = 51^\circ 40' 13''$ (RT)
 D = 13° 19' 29"
 R = 430.00'
 T = 208.20'
 L = 387.78'
 E = 47.75'
 e = N/A
 T.R. = N/A
 S.E. RUN = N/A
 P.C. STA. = 5+75.47
 P.T. STA. = 9+63.25

EXIST. CURVE EX-P4-3
 PI STA. = 12+64.37
 $\Delta = 37^\circ 41' 26''$ (LT)
 D = 20° 45' 34"
 R = 276.00'
 T = 94.20'
 L = 181.56'
 E = 15.63'
 e = N/A
 T.R. = N/A
 S.E. RUN = N/A
 P.C. STA. = 11+70.16
 P.T. STA. = 13+51.72

EXIST. CURVE EX-P4-4
 PI STA. = 16+27.68
 $\Delta = 73^\circ 19' 13''$ (RT)
 D = 38° 11' 50"
 R = 150.00'
 T = 111.64'
 L = 191.95'
 E = 36.99'
 e = N/A
 T.R. = N/A
 S.E. RUN = N/A
 P.C. STA. = 15+16.03
 P.T. STA. = 17+07.99



NAVD 1929 = 1983

FILE NAME = 0876A91-Sht-ATB09.dgn
VOLKERT

USER NAME = mmconachis	DESIGNED - CLS	REVISED -
PLOT SCALE = 100.0000' / IN.	DRAWN - MAM	REVISED -
PLOT DATE = 3/15/2011	CHECKED - CLS	REVISED -
	DATE - 3/18/2011	REVISED -

**STATE OF ILLINOIS
 DEPARTMENT OF TRANSPORTATION**

EXISTING ALIGNMENTS

SCALE: 1" = 100' SHEET NO. 9 OF 10 SHEETS STA. EX 216+50 TO STA. EX 247+00

F.A.I. RTE.	SECTION	COUNTY	TOTAL SHEETS	SHEET NO.
270	60-1B-1	MADISON	712	36
			CONTRACT NO. 76A91	
ILLINOIS FED. AID PROJECT				