

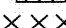
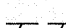



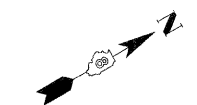


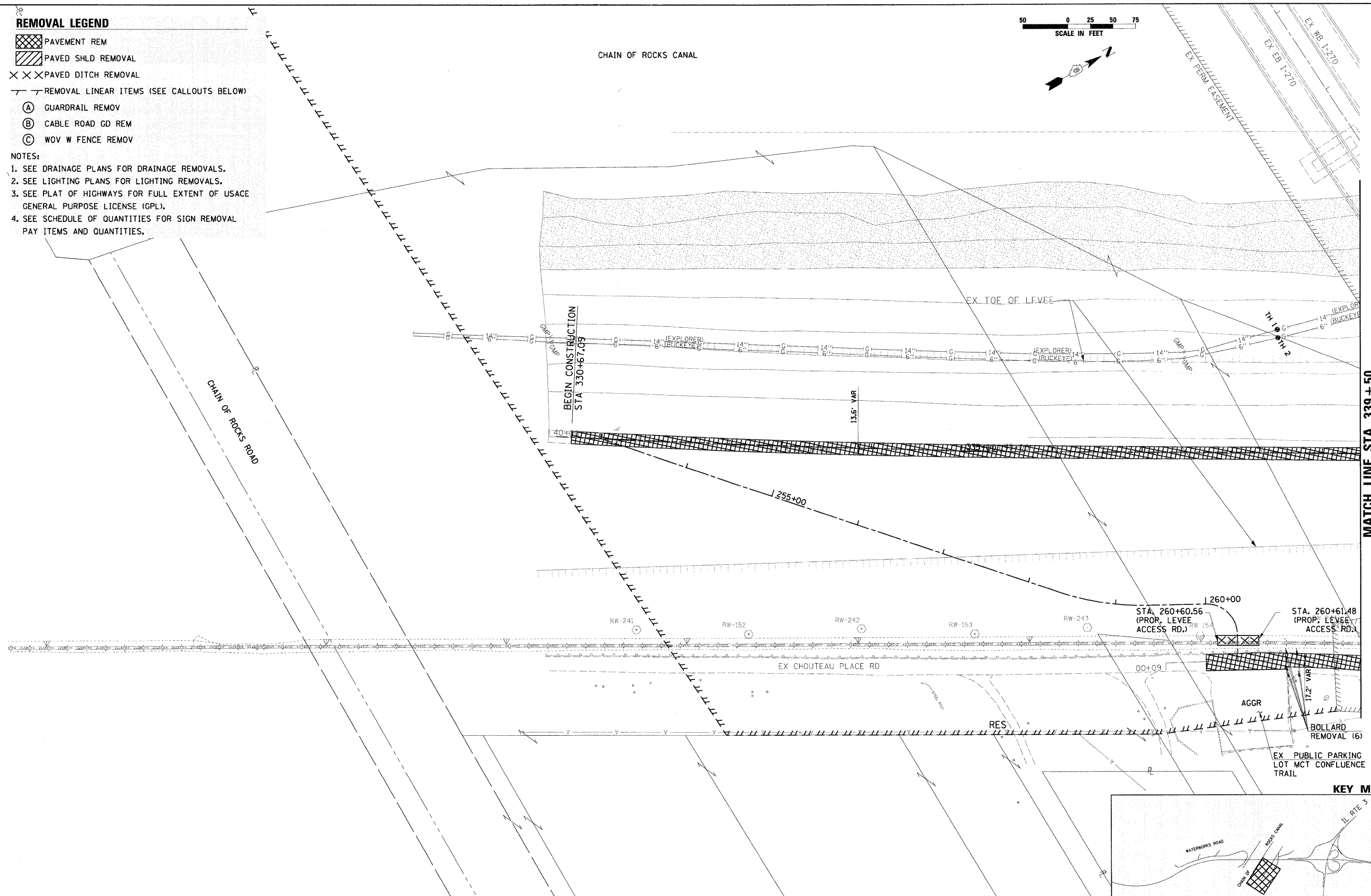
REMOVAL LEGEND

-  PAVEMENT REM
-  PAVED SHLD REMOVAL
-  PAVED DITCH REMOVAL
-  REMOVAL LINEAR ITEMS (SEE CALLOUTS BELOW)
-  GUARDRAIL REMOV
-  CABLE ROAD GD REM
-  WOV W FENCE REMOV

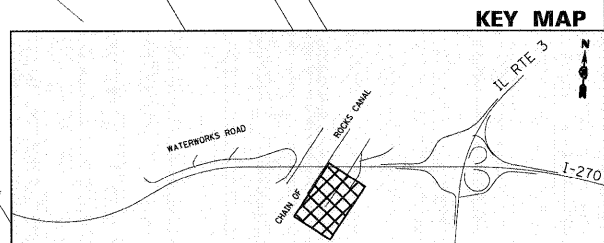
- NOTES:**
1. SEE DRAINAGE PLANS FOR DRAINAGE REMOVALS.
 2. SEE LIGHTING PLANS FOR LIGHTING REMOVALS.
 3. SEE PLAT OF HIGHWAYS FOR FULL EXTENT OF USACE GENERAL PURPOSE LICENSE (GPL).
 4. SEE SCHEDULE OF QUANTITIES FOR SIGN REMOVAL PAY ITEMS AND QUANTITIES.



CHAIN OF ROCKS CANAL



MATCH LINE STA 339+50



FILE NAME = 0876A91-Sht-Rem11.dgn	USER NAME = melopez	DESIGNED - SJM	REVISED - 01-04-11	STATE OF ILLINOIS DEPARTMENT OF TRANSPORTATION	REMOVAL PLANS CHAIN OF ROCKS LEVEE ROAD	F.A.I. RTE. 270	SECTION 60-1B-1	COUNTY MADISON	TOTAL SHEETS 712	SHEET NO. 48	
PLOT SCALE = #SCALE#					SCALE: 1" = 50'	SHEET NO. 11 OF 12 SHEETS	STA. 140+00 TO STA. 149+00		CONTRACT NO. 76A91		
PLOT DATE = 3/16/2011					DATE - 06-30-10		ILLINOIS FED. AID PROJECT				