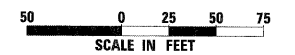


MATCH EXISTING STA. 60+45.00

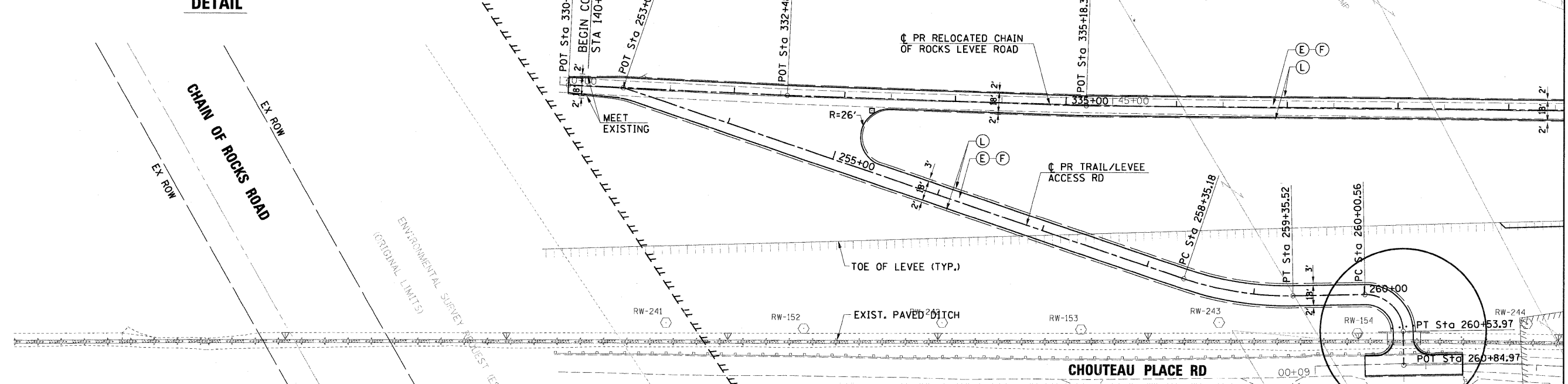
**DETAIL**

MATCH EXISTING STA. 61+33.00

PROP. CURVEPR-CPRN-1	PROP. CURVEPR-CPRN-2	PROP. CURVEPR-CPRN-3
PI STA. =253+35.86	PI STA. =261+11.47	PI STA. =261+95.34
$\Delta = 15^\circ 53' 07''$ (RT)	$\Delta = 19^\circ 28' 11''$ (LT)	$\Delta = 4^\circ 37' 09''$ (RT)
D =54° 34' 03"	D =54° 34' 03"	D =3° 29' 25"
R =105.00'	R =105.00'	R =1,641.60'
T =14.65'	T =18.01'	T =66.21'
L =29.11'	L =35.68'	L =132.35'
E =1.02'	E =1.53'	E =1.33'
e = -----	e = -----	e = -----
T.R. = -----	T.R. = -----	T.R. = -----
S.E. RUN = -----	S.E. RUN = -----	S.E. RUN = -----
P.C. STA. =253+21.21	P.C. STA. =260+93.45	P.C. STA. =261+29.13
P.T. STA. =253+50.32	P.T. STA. =261+29.13	P.T. STA. =262+61.48
DESIGN SPEED = 20 MPH	DESIGN SPEED = 20 MPH	DESIGN SPEED = 20 MPH



**CHAIN OF ROCKS CANAL**



MATCH LINE STA 339 + 50

**PROPOSED ROADWAY LEGEND**

(A) CONT REINF PCC PVT 12	(M) TOPSOIL EXC & PLAC
(B) HMA SC "D" N50	(N) CONC BAR 2F 42HT
(C) HMA BC IL-12.5 N50	(O) CONC BAR 1F 42HT SPL
(D) STABILIZED SUBBASE 4"	(P) MECH ST EARTH RET WL
(E) BIT SURF TREAT CL A-3	(R) SPBGR TY A 6FT POSTS
(F) AGG BASE CSE A 8	(S) PCC PVT 12 JOINTED
(G) SUB GRAN MAT A 12	(T) HMA PAVT FD 13
(H) PCC SHOULDERS 12	(U) PROCESS MOD SOIL 12 AND LIME
(I) PCC SHOULDERS 12 SPL	(W) SUB GRAN MAT C
(J) HMA SHOULDERS 10 1/2	(X) WOV W FENCE 4
(K) SHLDR STABILIZATION (NOTE 1)	(Y) SPBGR TY A 9FT POST
(L) AGGREGATE SHLDS A 6	(AA) SHOULDER RUMBLE STRIP

NOTE 1: (K) PAID FOR AS (H) OR (J) TO MATCH ADJACENT SHOULDER  
 NOTE 2: SEE PLAT OF HIGHWAY FOR FULL EXTENT OF GENERAL PURPOSE LICENSE. (GPL)