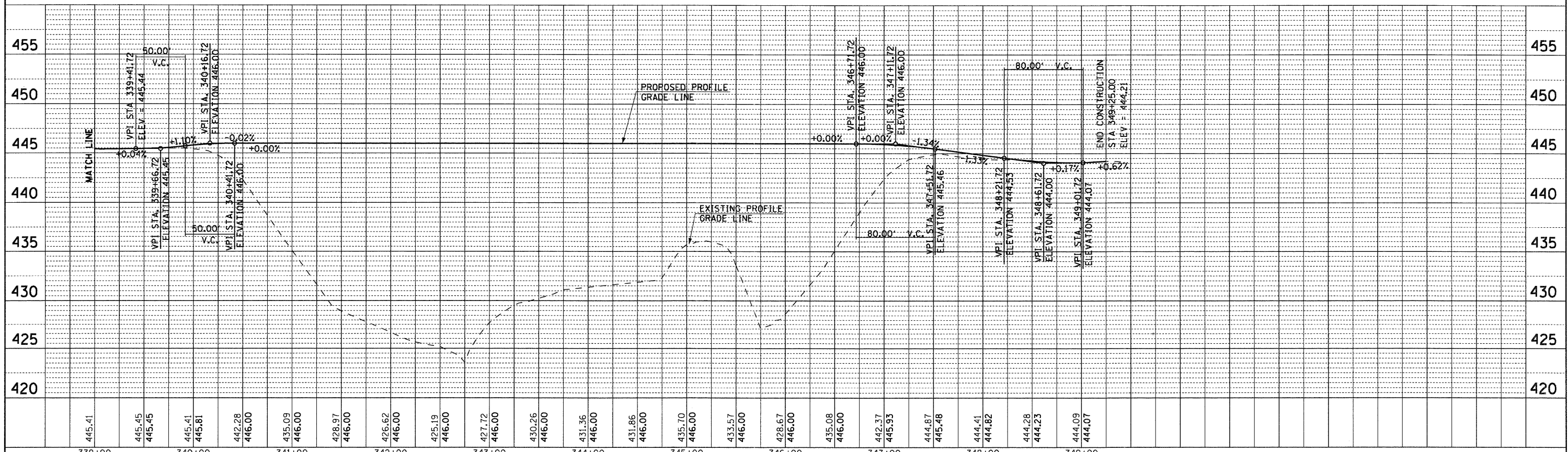
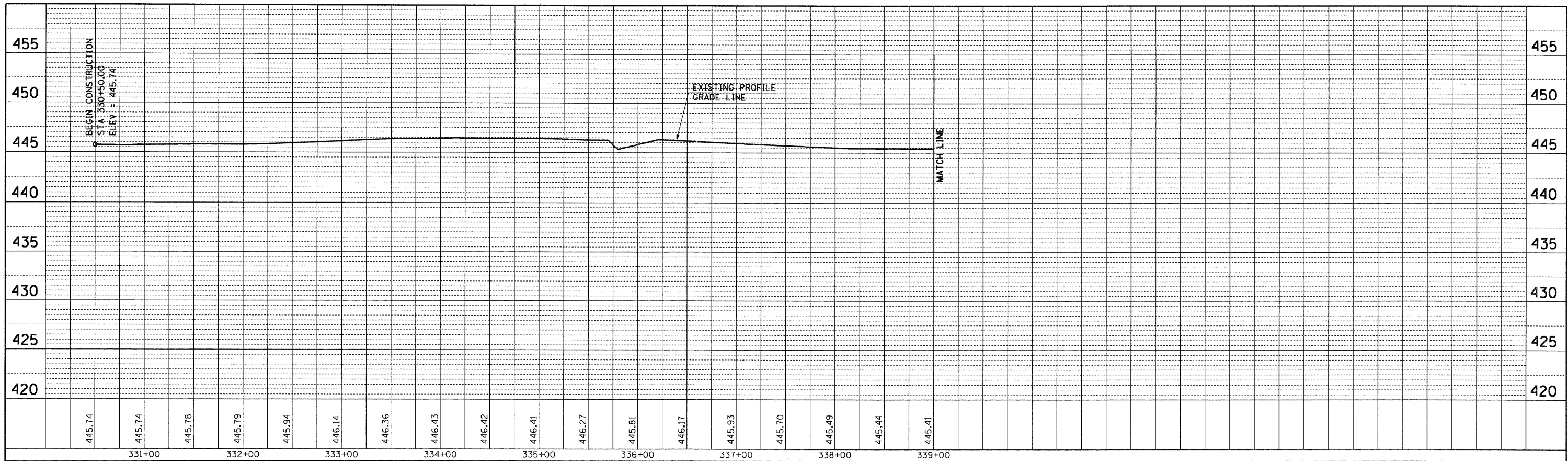


PLAN	SURVEYED	BY	DATE
	PLOTTED		
	CHECKED		
	DATE		
	FILE NAME		

PROFILE	SURVEYED	BY	DATE
	PLOTTED		
	CHECKED		
	DATE		
	FILE NAME		



FILE NAME = D876A91-Sht-Profile21.DGN	USER NAME = mmconeche	DESIGNED - CLS	REVISED -	STATE OF ILLINOIS DEPARTMENT OF TRANSPORTATION	PROFILE RELOCATED LEVEE ROAD (EAST)	F.A.I. RTE. = 270	SECTION = 60-1B-1	COUNTY = MADISON	TOTAL SHEETS = 712	SHEET NO. = 85		
VOLKERT	PLOT SCALE = 50.0000' / IN.	DRAWN - MAM	REVISED -			SCALE: 1"=(H)50'(V)5'	SHEET NO. 21 OF 24 SHEETS	STA. 330+50.00 TO STA. 349+25.00	CONTRACT NO. 76A91			
	PLOT DATE = 3/16/2011	CHECKED - CLS	REVISED -			[ILLINOIS] FED. AID PROJECT						
		DATE = 3/18/2011	REVISED -									