

MOT PAVEMENT MARKING LEGEND

- | | |
|---------------------------------------------------------------|----------------------------------------------------------------|
| (A) TEMP PVT MK LINE 4 (SOLID YELLOW) | (I) EPOXY PVT MK LINE 4 (SKIP-DASH, WHITE, 10' DASH, 30' SKIP) |
| (B) TEMP PVT MK LINE 4 (SOLID WHITE) | (J) NOT USED |
| (C) TEMP PVT MK LINE 4 (SKIP-DASH, WHITE, 10' DASH, 30' SKIP) | (K) WET PAVT TAPE T3 4 (SOLID YELLOW) |
| (D) NOT USED | (L) WET PAVT TAPE T3 4 (SOLID WHITE) |
| (E) TEMP PVT MK LINE 24 (SOLID WHITE) | (M) WET PAVT TAPE T3 4 (SKIP-DASH, WHITE, 10' DASH, 30' SKIP) |
| (F) TEMP PVT MK LTR & SYM (SOLID WHITE) | (N) WET PAVT TAPE T3 6 (SOLID WHITE) |
| (G) EPOXY PVT MK LINE 4 (SOLID YELLOW) | (O) WET PAVT TAPE T3 24 (SOLID WHITE) |
| (H) EPOXY PVT MK LINE 4 (SOLID WHITE) | |

MOT LEGEND

- WORK ZONE AREA
 - WORK ZONE FOR TEMPORARY PAVEMENT CONSTRUCTION
 - COMPLETED TEMPORARY PAVEMENT IN PREVIOUS STAGES
 - IMPACT ATTENUATOR
 - DIRECTION OF TRAFFIC
 - TEMPORARY CONCRETE BARRIER
 - SIGN ON PORTABLE OR PERMANENT SUPPORT
 - TYPE III BARRICADES
 - TYPE II WITH STEADY BURNING MONODIRECTIONAL LIGHT *
 - MESSAGE BOARD
- * DRUM OR BARRICADE SPACING:
 50' C-C ON TANGENTS
 25' C-C ON TAPERS OR LANE SHIFTS
 12' C-C ON RADII'S OR RAMP
 5' C-C FOR RAMP OR ROAD CLOSURES

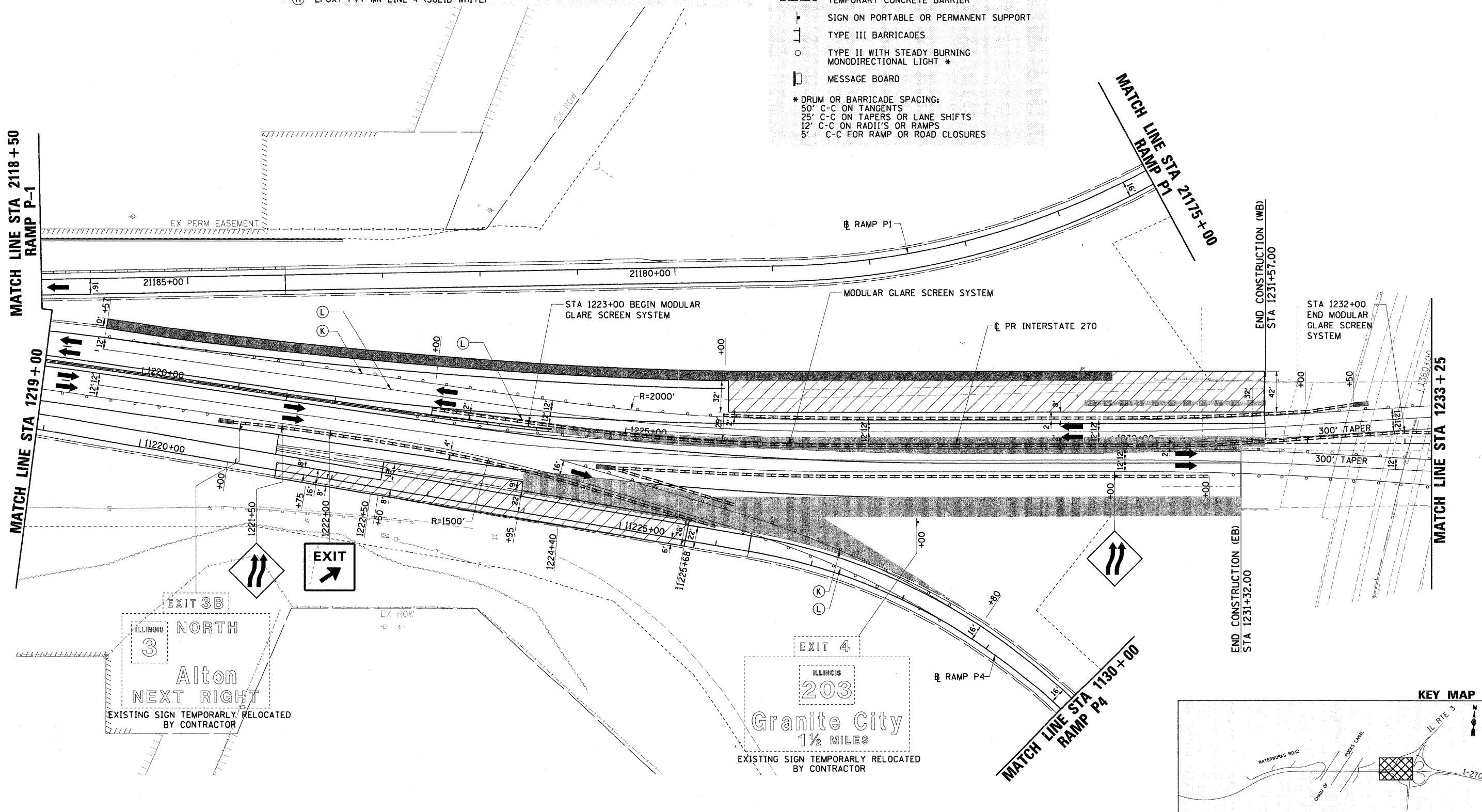


MATCH LINE STA 2118+50
RAMP P-1

MATCH LINE STA 1219+00

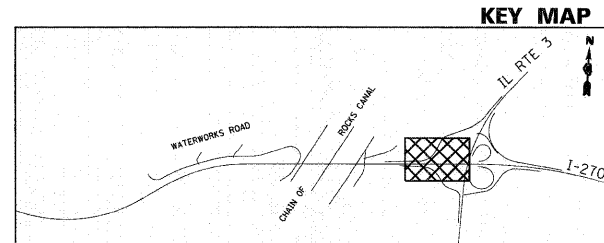
MATCH LINE STA 21175+00
RAMP P1

MATCH LINE STA 1233+25



ILLINOIS NORTH
 3
 Aiton
 NEXT RIGHT
 EXISTING SIGN TEMPORARILY RELOCATED BY CONTRACTOR

ILLINOIS
 203
 Granite City
 1 1/2 MILES
 EXISTING SIGN TEMPORARILY RELOCATED BY CONTRACTOR



FILE NAME = 0876A91-Sht-MOT05-07.dgn	USER NAME = molopez	DESIGNED - JC	REVISED - 1-01-11
		DRAWN - BH	REVISED -
		CHECKED -	REVISED -
		DATE -	REVISED -

STATE OF ILLINOIS
 DEPARTMENT OF TRANSPORTATION

SUGGESTED MAINTENANCE OF TRAFFIC STAGE 5
 INTERSTATE 270

F.A.I. RTE.	SECTION	COUNTY	TOTAL SHEETS	SHEET NO.
270	60-1B-1	MADISON	712	187
				CONTRACT NO. 76A91
ILLINOIS FED. AID PROJECT				

SCALE: 1" = 50' SHEET NO. 7 OF 11 SHEETS STA. TO STA.