



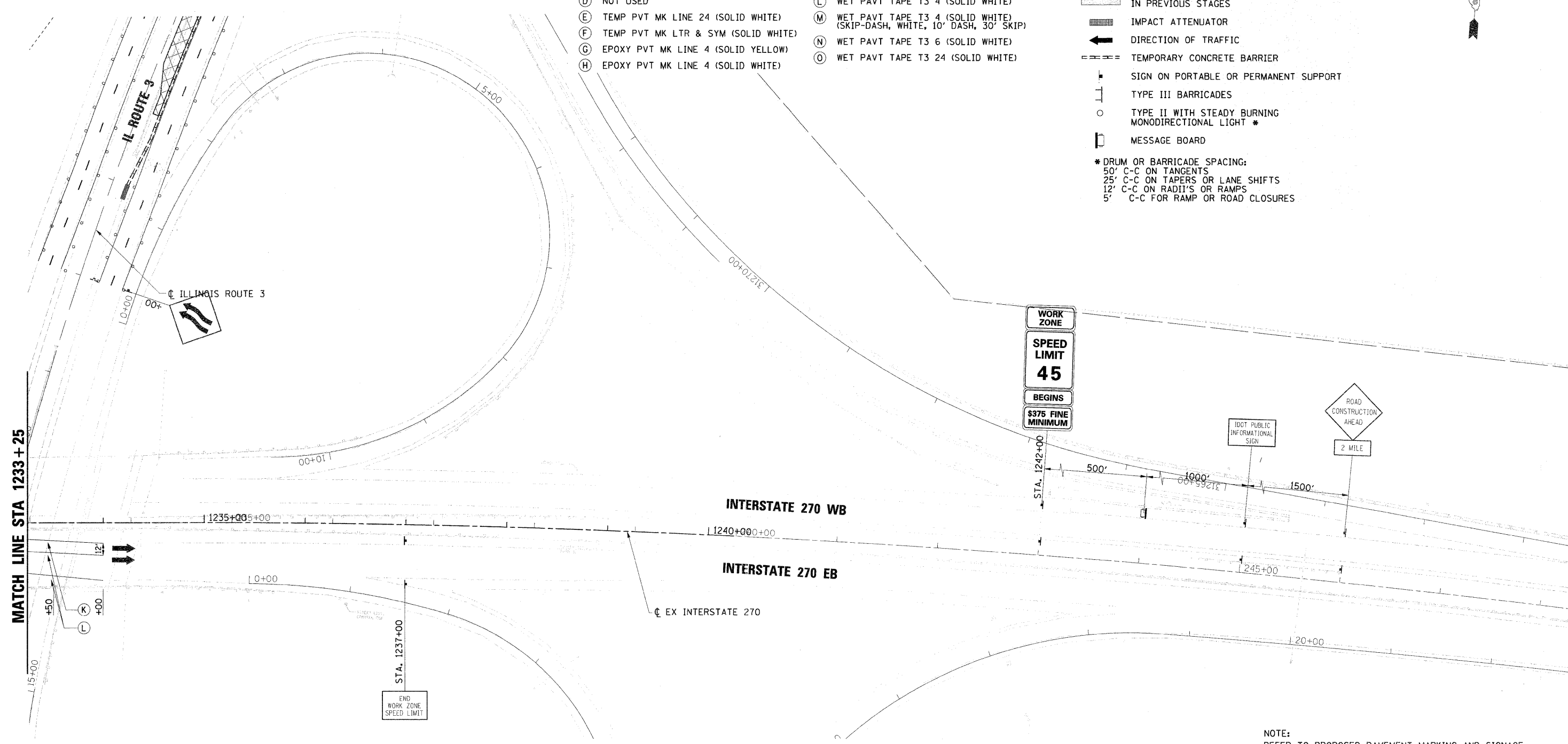
MOT PAVEMENT MARKING LEGEND

- (A) TEMP PVT MK LINE 4 (SOLID YELLOW)
- (B) TEMP PVT MK LINE 4 (SOLID WHITE)
- (C) TEMP PVT MK LINE 4 (SKIP-DASH, WHITE, 10' DASH, 30' SKIP)
- (D) NOT USED
- (E) TEMP PVT MK LINE 24 (SOLID WHITE)
- (F) TEMP PVT MK LTR & SYM (SOLID WHITE)
- (G) EPOXY PVT MK LINE 4 (SOLID YELLOW)
- (H) EPOXY PVT MK LINE 4 (SOLID WHITE)
- (I) EPOXY PVT MK LINE 4 (SKIP-DASH, WHITE, 10' DASH, 30' SKIP)
- (J) NOT USED
- (K) WET PAVT TAPE T3 4 (SOLID YELLOW)
- (L) WET PAVT TAPE T3 4 (SOLID WHITE)
- (M) WET PAVT TAPE T3 4 (SOLID WHITE) (SKIP-DASH, WHITE, 10' DASH, 30' SKIP)
- (N) WET PAVT TAPE T3 6 (SOLID WHITE)
- (O) WET PAVT TAPE T3 24 (SOLID WHITE)

MOT LEGEND

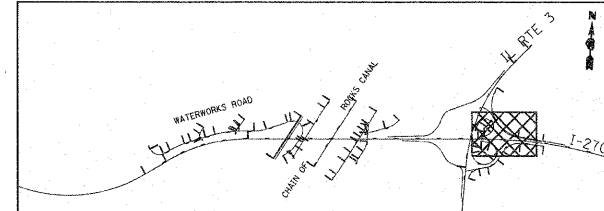
- WORK ZONE AREA
- WORK ZONE FOR TEMPORARY PAVEMENT CONSTRUCTION
- COMPLETED TEMPORARY PAVEMENT IN PREVIOUS STAGES
- IMPACT ATTENUATOR
- DIRECTION OF TRAFFIC
- TEMPORARY CONCRETE BARRIER
- SIGN ON PORTABLE OR PERMANENT SUPPORT
- TYPE III BARRICADES
- TYPE II WITH STEADY BURNING MONODIRECTIONAL LIGHT *
- MESSAGE BOARD

* DRUM OR BARRICADE SPACING:
 50' C-C ON TANGENTS
 25' C-C ON TAPERS OR LANE SHIFTS
 12' C-C ON RADII'S OR RAMP
 5' C-C FOR RAMP OR ROAD CLOSURES



NOTE:
 REFER TO PROPOSED PAVEMENT MARKING AND SIGNAGE PLANS FOR PROPOSED PAVEMENT MARKINGS AND SIGNAGE LOCATIONS THAT WILL BE PLACED IN STAGE 6.

KEY MAP



| | | | | | | | | | | | |
|---|--------------------|---------------|-------------------|---|--|-------------------------|-----------------|----------------|--------------------|---------------|--|
| FILE NAME = DB76A91-Shr-MOT06-06.dgn | USER NAME = sblven | DESIGNED - JC | REVISED - 1-01-11 | STATE OF ILLINOIS DEPARTMENT OF TRANSPORTATION | SUGGESTED MAINTENANCE OF TRAFFIC STAGE 6 INTERSTATE 270 | F.A.I. RTE. 270 | SECTION 60-1B-1 | COUNTY MADISON | TOTAL SHEETS 712 | SHEET NO. 199 | |
| PLOT SCALE = #SCALE# | | CHECKED - | REVISED - | | SCALE: 1" = 50' | SHEET NO. 8 OF 9 SHEETS | STA. | TO STA. | CONTRACT NO. 76A91 | | |
| PLOT DATE = 4/20/2011 | | DATE - | REVISED - | | ILLINOIS FED. AID PROJECT | | | | | | |
| | | | | | | | | | | | |