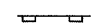

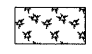
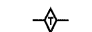
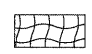
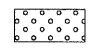
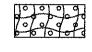


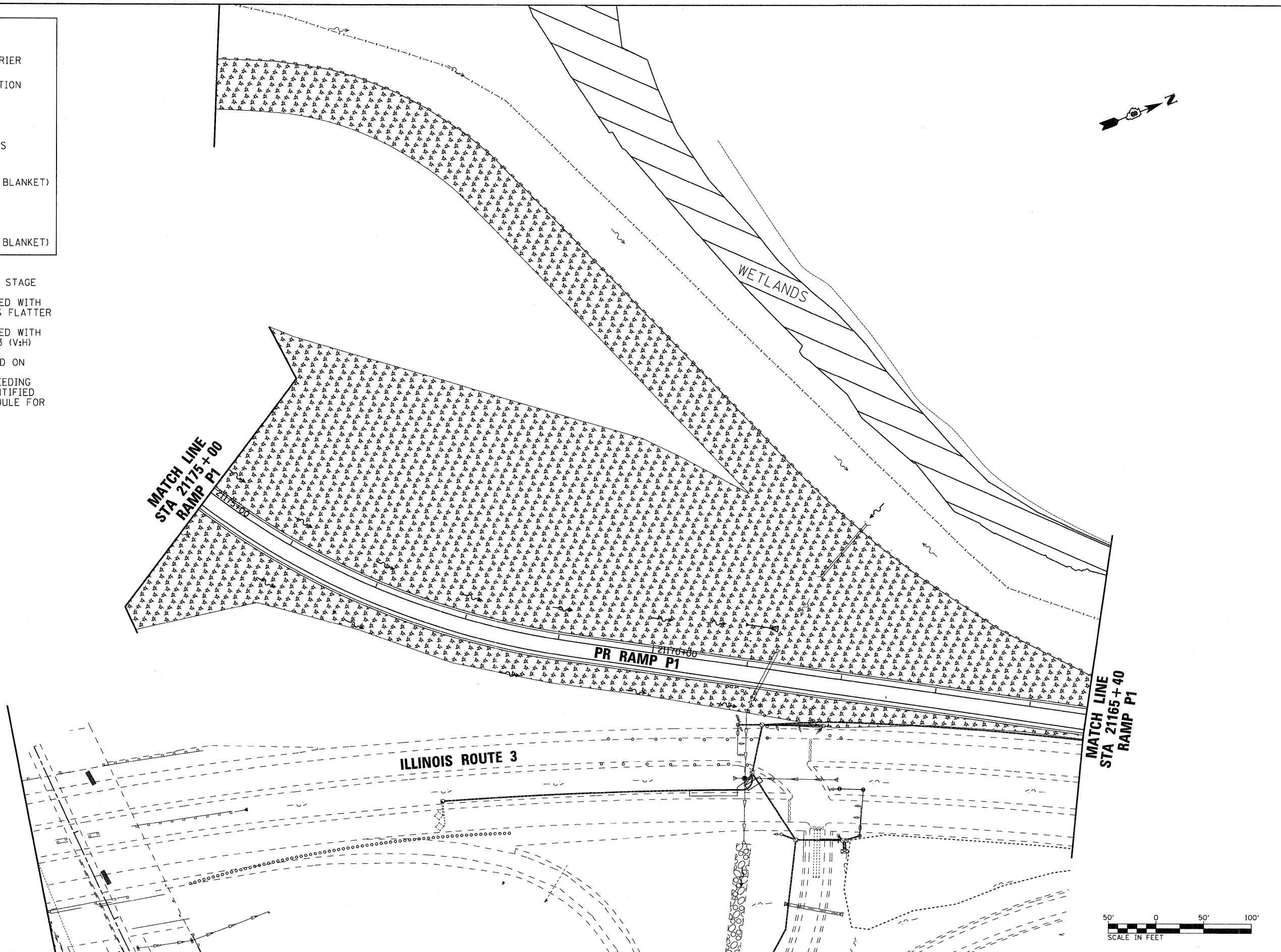
LEGEND

-  PERIMETER EROSION BARRIER
-  INLET AND PIPE PROTECTION
-  CLASS 2A SEEDING
(WITH MULCH METHOD 2)
-  TEMPORARY DITCH CHECKS
-  CLASS 3A SEEDING
(WITH EROSION CONTROL BLANKET)
-  SEEDING, SPECIAL
-  SEEDING, SPECIAL
(WITH EROSION CONTROL BLANKET)

NOTE:
FINAL SEEDING AREAS ARE SHOWN BY STAGE AND TYPE.

- SEEDING CLASS 2A SHALL BE USED WITH MULCH METHOD 2 ON SIDE SLOPES FLATTER THAN 1:3 (V:H).
- SEEDING CLASS 3A SHALL BE USED WITH EROSION CONTROL BLANKET ON 1:3 (V:H) OR STEEPER SLOPES.
- SEEDING, SPECIAL SHALL BE USED ON LEVEE AREAS AS SHOWN.

TWO APPLICATIONS OF TEMPORARY SEEDING WITH MULCH METHOD 2 IS ALSO QUANTIFIED AND INCLUDED IN THE SEEDING SCHEDULE FOR ALL AREAS.



FILE NAME =
D676A91-Sht-E-05-07.dgn
VOLKERT

USER NAME = untitled
DESIGNED -
DRAWN -
PLOT SCALE = 50,0000' / IN.
CHECKED -
PLOT DATE = 3/15/2011
DATE -

DESIGNED -
DRAWN -
CHECKED -
DATE -

REVISED -
REVISED -
REVISED -
REVISED -

**STATE OF ILLINOIS
DEPARTMENT OF TRANSPORTATION**

EROSION CONTROL PLAN - STAGE 5

SCALE: 1" = 50' SHEET NO. 34 OF 38 SHEETS STA. N/A TO STA. N/A

F.A.I. RTE.	SECTION	COUNTY	TOTAL SHEETS	SHEET NO.
270	60-1B-1	MADISON	712	245
				CONTRACT NO. 76A91
ILLINOIS FED. AID PROJECT				