





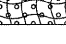
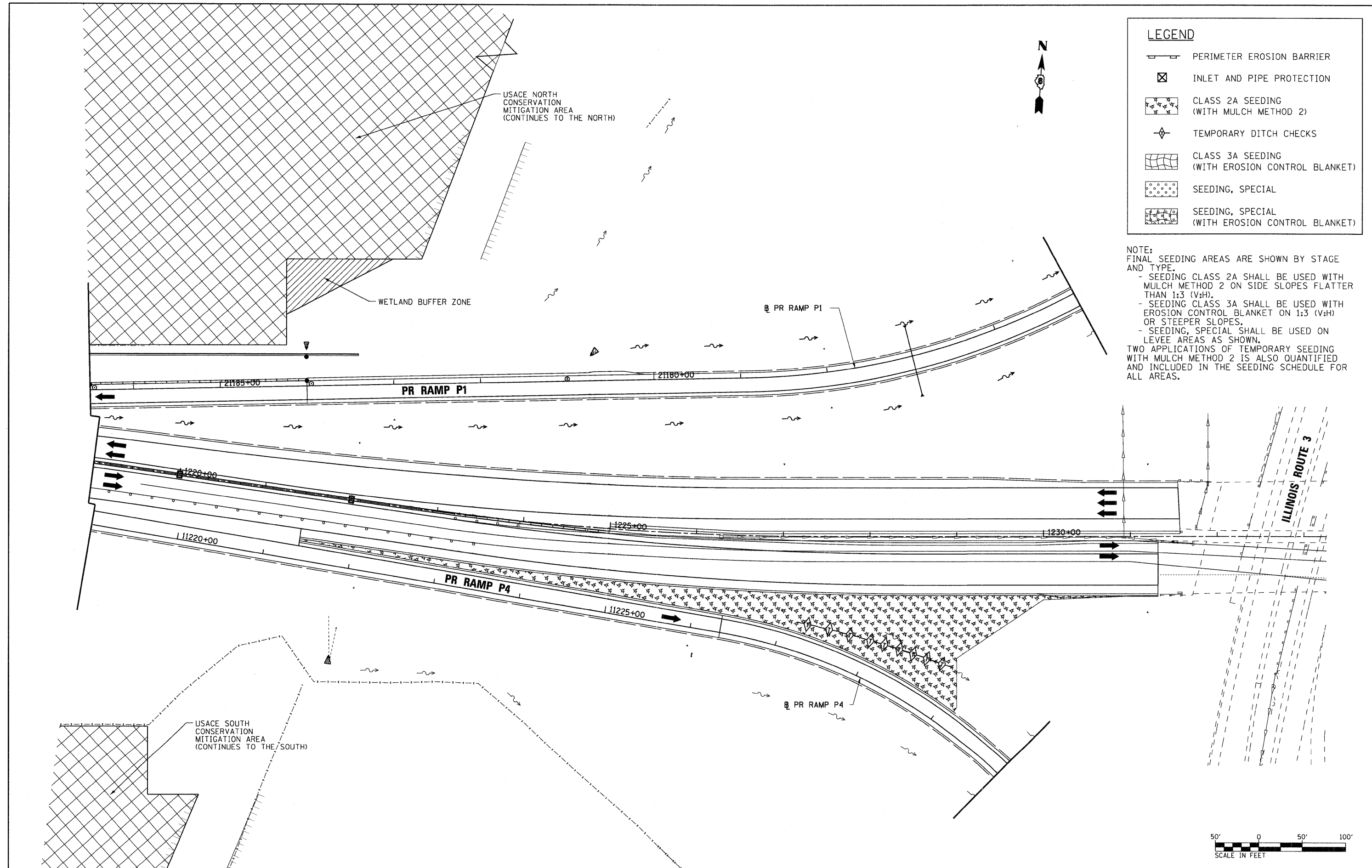


LEGEND

-  PERIMETER EROSION BARRIER
-  INLET AND PIPE PROTECTION
-  CLASS 2A SEEDING (WITH MULCH METHOD 2)
-  TEMPORARY DITCH CHECKS
-  CLASS 3A SEEDING (WITH EROSION CONTROL BLANKET)
-  SEEDING, SPECIAL
-  SEEDING, SPECIAL (WITH EROSION CONTROL BLANKET)

NOTE:
 FINAL SEEDING AREAS ARE SHOWN BY STAGE AND TYPE.
 - SEEDING CLASS 2A SHALL BE USED WITH MULCH METHOD 2 ON SIDE SLOPES FLATTER THAN 1:3 (V:H).
 - SEEDING CLASS 3A SHALL BE USED WITH EROSION CONTROL BLANKET ON 1:3 (V:H) OR STEEPER SLOPES.
 - SEEDING, SPECIAL SHALL BE USED ON LEVEE AREAS AS SHOWN.
 TWO APPLICATIONS OF TEMPORARY SEEDING WITH MULCH METHOD 2 IS ALSO QUANTIFIED AND INCLUDED IN THE SEEDING SCHEDULE FOR ALL AREAS.



FILE NAME = D876A91-Sht-Eros-06-06.dgn
VOLKERT

USER NAME = untitled
 DESIGNED - MPW
 DRAWN - CJS
 CHECKED - PMK
 PLOT SCALE = 50.0000' / IN.
 PLOT DATE = 3/15/2011
 DATE - 3/18/2011

REVISED -
 REVISED -
 REVISED -
 REVISED -

**STATE OF ILLINOIS
 DEPARTMENT OF TRANSPORTATION**

EROSION CONTROL PLAN - STAGE 6

SCALE: 1" = 50' SHEET NO. 37 OF 38 SHEETS STA. 1219+00 TO STA. 1233+00

| F.A.I. RTE. | SECTION | COUNTY | TOTAL SHEETS | SHEET NO. |
|---------------------------|---------|---------|--------------|--------------------|
| 270 | 60-1B-1 | MADISON | 712 | 248 |
| | | | | CONTRACT NO. 76A91 |
| ILLINOIS FED. AID PROJECT | | | | |