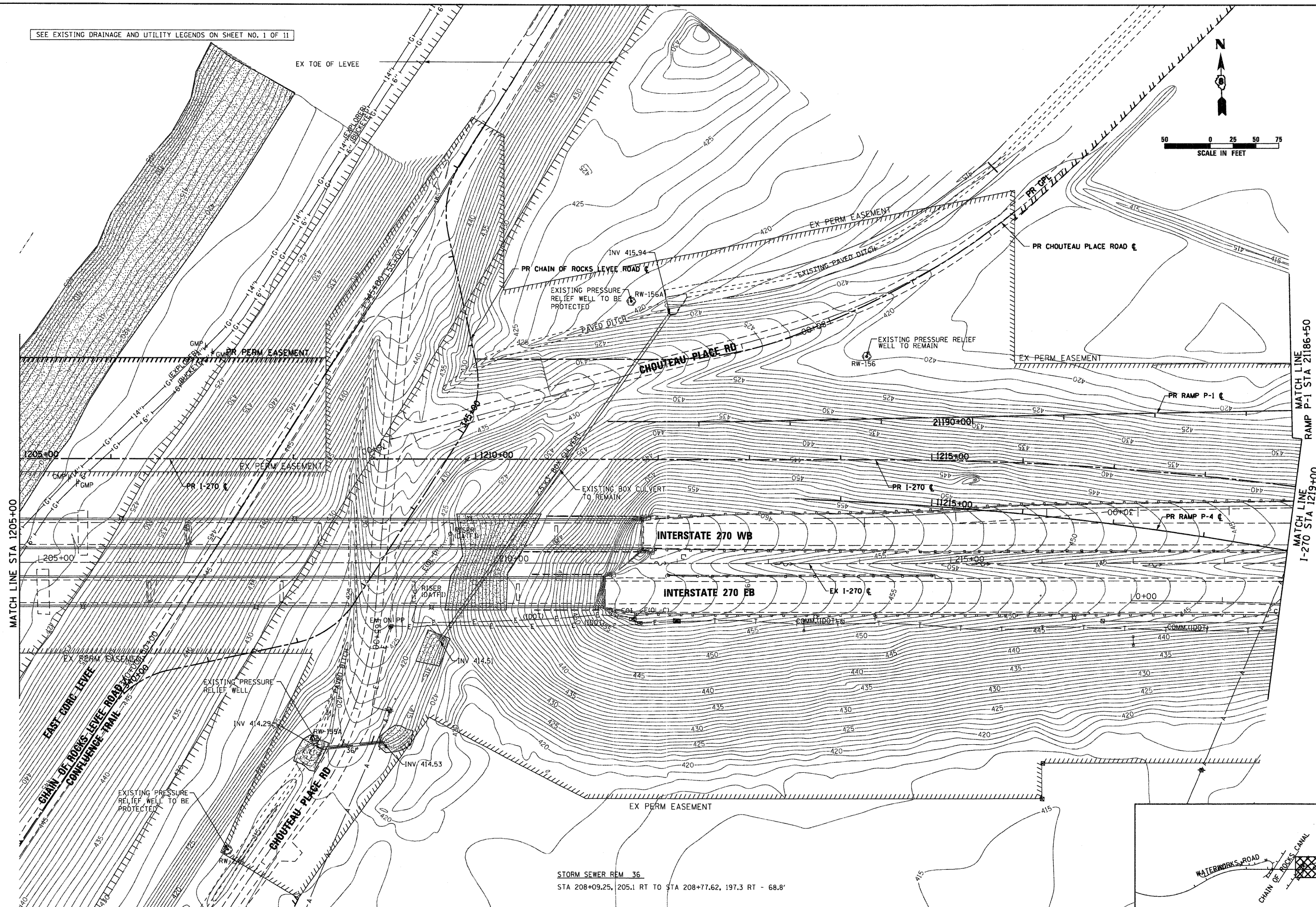
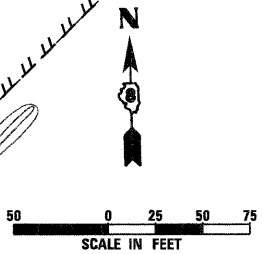
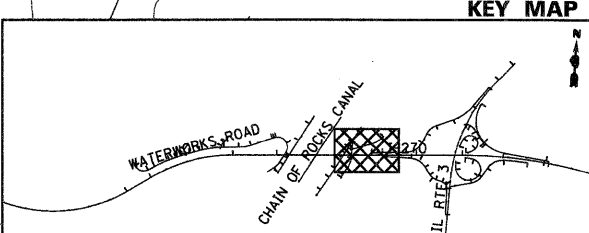


SEE EXISTING DRAINAGE AND UTILITY LEGENDS ON SHEET NO. 1 OF 11



STORM SEWER REM 36  
 STA 208+09.25, 205.1 RT TO STA 208+77.62, 197.3 RT - 68.8'



FILE NAME = D876A91-Sht-ExD-air05.dgn	USER NAME = EDean	DESIGNED - JWM	REVISED -	<b>STATE OF ILLINOIS</b> <b>DEPARTMENT OF TRANSPORTATION</b>	<b>EXISTING DRAINAGE &amp; UTILITIES</b> <b>INTERSTATE 270</b>			F.A.I. RTE. 270	SECTION 60-1B-1	COUNTY MADISON	TOTAL SHEETS 712	SHEET NO. 254
	PLOT SCALE = 1:50	DRAWN - JWM	REVISED -		SCALE: 1" = 50'	SHEET NO. 5 OF 11 SHEETS	STA. 1205+00 TO STA. 1219+00	CONTRACT NO. 76A91		ILLINOIS FED. AID PROJECT		
	PLOT DATE = 3/18/11	CHECKED - MBL	REVISED -									
		DATE - 3/18/11	REVISED -									