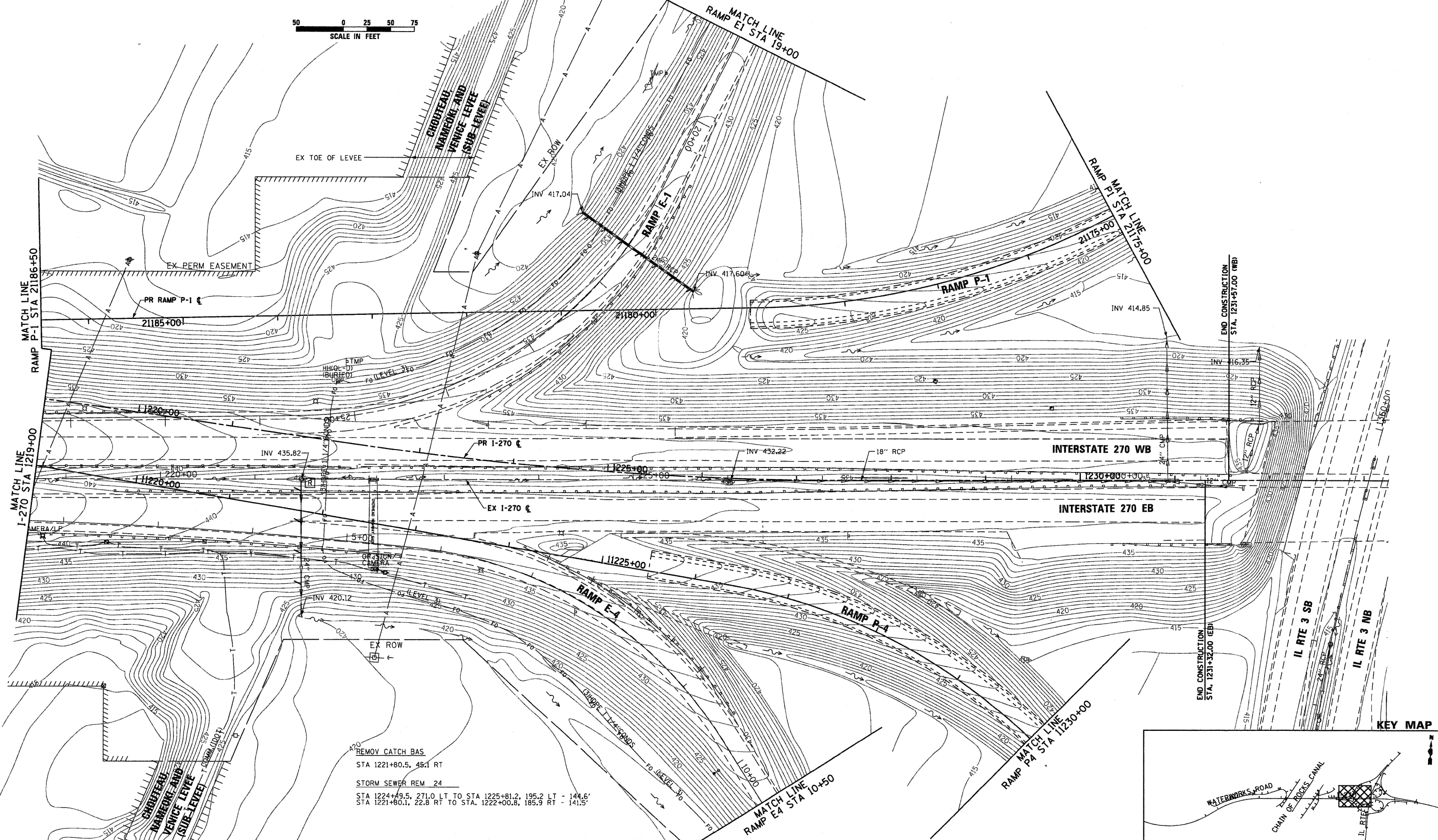


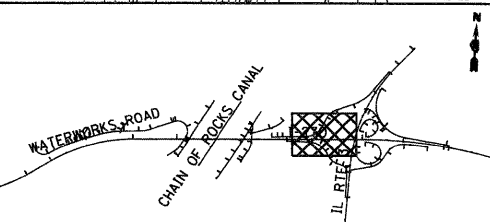
SEE EXISTING DRAINAGE AND UTILITY LEGENDS ON SHEET NO. 1 OF 11



0 25 50 75
SCALE IN FEET



REMOV CATCH BAS
STA 1221+80.5, 45.1 RT
STORM SEWER REM 24
STA 1224+49.5, 271.0 LT TO STA 1225+81.2, 195.2 LT - 144.6'
STA 1221+80.1, 22.8 RT TO STA. 1222+00.8, 185.9 RT - 141.5'



FILE NAME =
D876A91-Sht-ExD-rain06.dgn

USER NAME = EDeon
PLOT SCALE = 1:50
PLOT DATE = 3/18/11

DESIGNED - JWM
DRAWN - JWM
CHECKED - MBL
DATE - 3/18/11

REVISED -
REVISED -
REVISED -
REVISED -

**STATE OF ILLINOIS
DEPARTMENT OF TRANSPORTATION**

**EXISTING DRAINAGE & UTILITIES
INTERSTATE 270**

SCALE: 1" = 50' SHEET NO. 6 OF 11 SHEETS STA. 1219+00 TO STA.

F.A.I. RTE.	SECTION	COUNTY	TOTAL SHEETS	SHEET NO.
270	60-1B-1	MADISON	712	255
				CONTRACT NO. 76A91
ILLINOIS FED. AID PROJECT				