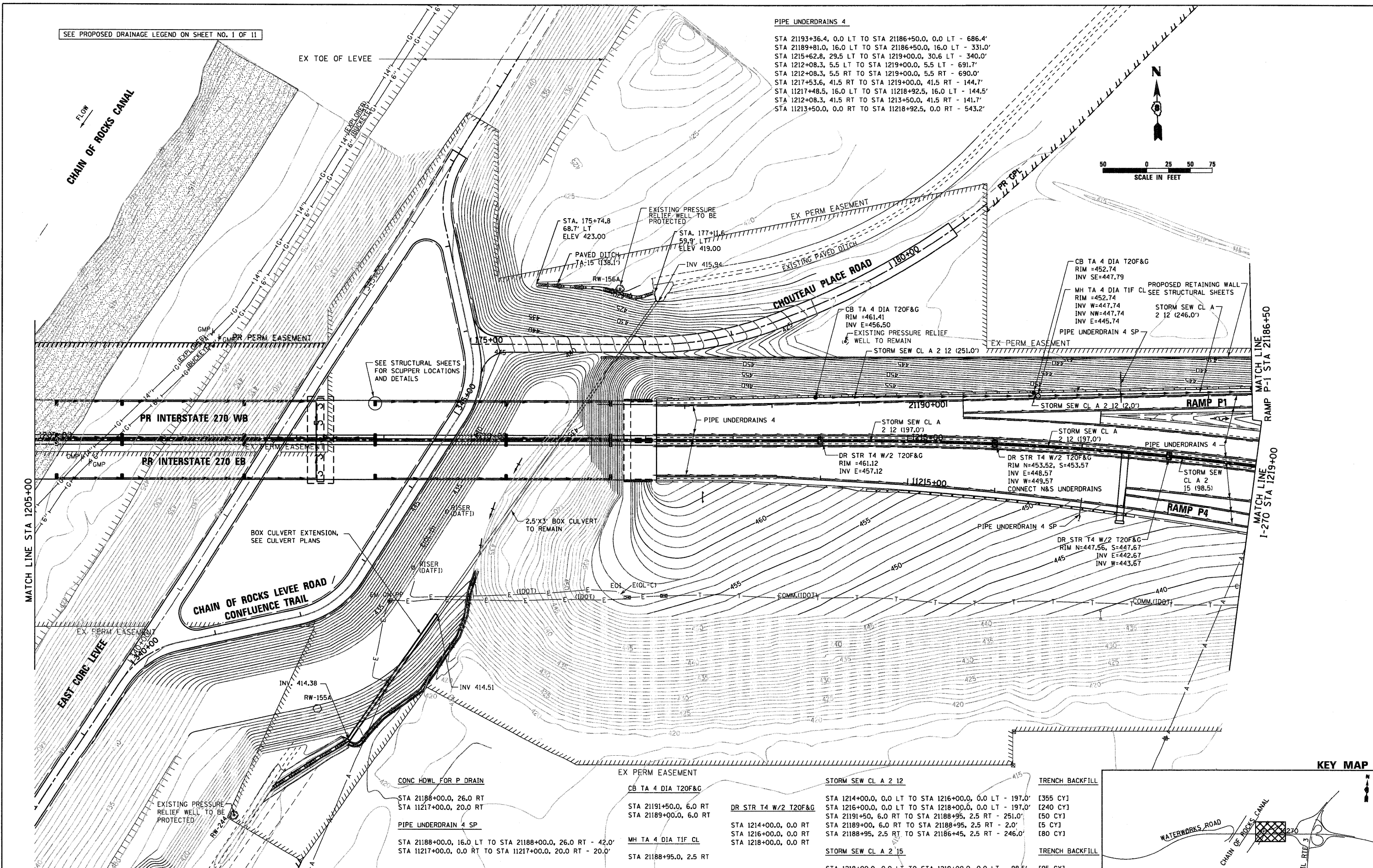
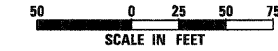


SEE PROPOSED DRAINAGE LEGEND ON SHEET NO. 1 OF 11

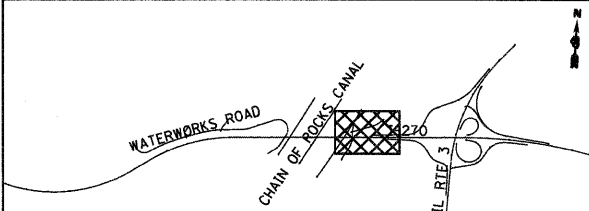
PIPE UNDERDRAINS 4

STA 21193+36.4, 0.0 LT TO STA 21186+50.0, 0.0 LT - 686.4'
 STA 21189+81.0, 16.0 LT TO STA 21186+50.0, 16.0 LT - 331.0'
 STA 1215+62.8, 29.5 LT TO STA 1219+00.0, 30.6 LT - 340.0'
 STA 1212+08.3, 5.5 LT TO STA 1219+00.0, 5.5 LT - 691.7'
 STA 1212+08.3, 5.5 RT TO STA 1219+00.0, 5.5 RT - 690.0'
 STA 1217+53.6, 41.5 RT TO STA 1219+00.0, 41.5 RT - 144.7'
 STA 11217+48.5, 16.0 LT TO STA 11218+92.5, 16.0 LT - 144.5'
 STA 1212+08.3, 41.5 RT TO STA 1213+50.0, 41.5 RT - 141.7'
 STA 11213+50.0, 0.0 RT TO STA 11218+92.5, 0.0 RT - 543.2'



MATCH LINE
 RAMP P-1 STA 21186+50
 MATCH LINE
 I-270 STA 1219+00

KEY MAP



FILE NAME = DB76A91-Sht-Pr-D-ain85.dgn	USER NAME = EDean	DESIGNED - JWM	REVISED -	STATE OF ILLINOIS DEPARTMENT OF TRANSPORTATION	PROPOSED DRAINAGE PLAN INTERSTATE 270			F.A.I. RTE. 270	SECTION 60-1B-1	COUNTY MADISON	TOTAL SHEETS 712	SHEET NO. 265
	PLLOT SCALE = 1:500	DRAWN - JWM	REVISED -		SCALE: 1" = 50'			SHEET NO. 5 OF 11 SHEETS			CONTRACT NO. 76A91	
	PLLOT DATE = 3/18/11	CHECKED - MBL	REVISED -		STA. 1205+00 TO STA. 1219+00			ILLINOIS FED. AID PROJECT				
		DATE - 3/18/11	REVISED -									