

CONC HDWL FOR P DRAIN

STA 21183+00.0, 40.0 LT
STA 21178+00.0, 26.0 RT
STA 21178+00.0, 40.0 LT
STA 1222+00.0, 64.9 LT
STA 1227+00.0, 81.9 LT
STA 1227+00.0, 83.4 RT
STA 1231+20.0, 81.9 LT
STA 1231+20.0, 83.4 RT
STA 1222+00.0, 20.0 RT
STA 1226+00.0, 20.0 RT

PIPE UNDERDRAIN 4 SP

STA 21183+00.0, 0.0 LT TO STA 21183+00.0, 40.0 LT - 40.0'
STA 21178+00.0, 0.0 LT TO STA 21178+00.0, 26.0 RT - 26.0'
STA 21178+00.0, 16.0 LT TO STA 21178+00.0, 40.0 LT - 24.0'
STA 1222+00.0, 38.9 LT TO STA 1222+00.0, 64.9 LT - 26.0'
STA 1222+18.9, 41.5 RT TO STA 1222+18.9, 99.2 RT - 57.7'
STA 1225+99.2, 93.9 RT TO STA 1225+95.0, 128.2 RT - 34.5'
STA 1227+00.0, 19.9 LT TO STA 1227+00.0, 81.9 LT - 62.0'
STA 1227+00.0, 17.4 RT TO STA 1227+00.0, 83.4 RT - 66.0'
STA 1231+20.0, 19.9 LT TO STA 1231+20.0, 81.9 LT - 62.0'
STA 1231+20.0, 17.4 RT TO STA 1231+20.0, 83.4 RT - 66.0'

PIPE UNDERDRAINS 4

STA 21186+50.0, 0.0 LT TO STA 21175+00, 0.0 LT - 1,150.0'
STA 21186+50.0, 16.0 LT TO STA 21175+00, 16.0 LT - 1,157.6'
STA 1219+00.0, 30.6 LT TO STA 1231+20.0, 56.3 LT - 1,213.7'
STA 1219+00.0, 5.5 LT TO STA 1231+20.0, 20.3 LT - 1,218.2'
STA 1219+00.0, 5.5 RT TO STA 1231+20.0, 20.2 RT - 1,221.8'
STA 1219+00.0, 41.1 RT TO STA 1231+20.0, 56.2 RT - 1,226.4'
STA 1218+92.5, 16.0 LT TO STA 11230+00.0, 16.0 LT - 1,117.3'
STA 1218+92.5, 0.0 LT TO STA 11230+00.0, 0.0 LT - 1,107.5'

CB TA 4 DIA T20F&G

STA 21186+50.0, 6.0 RT
STA 21184+00.0, 6.0 RT

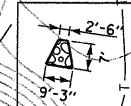
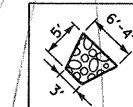
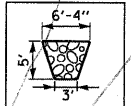
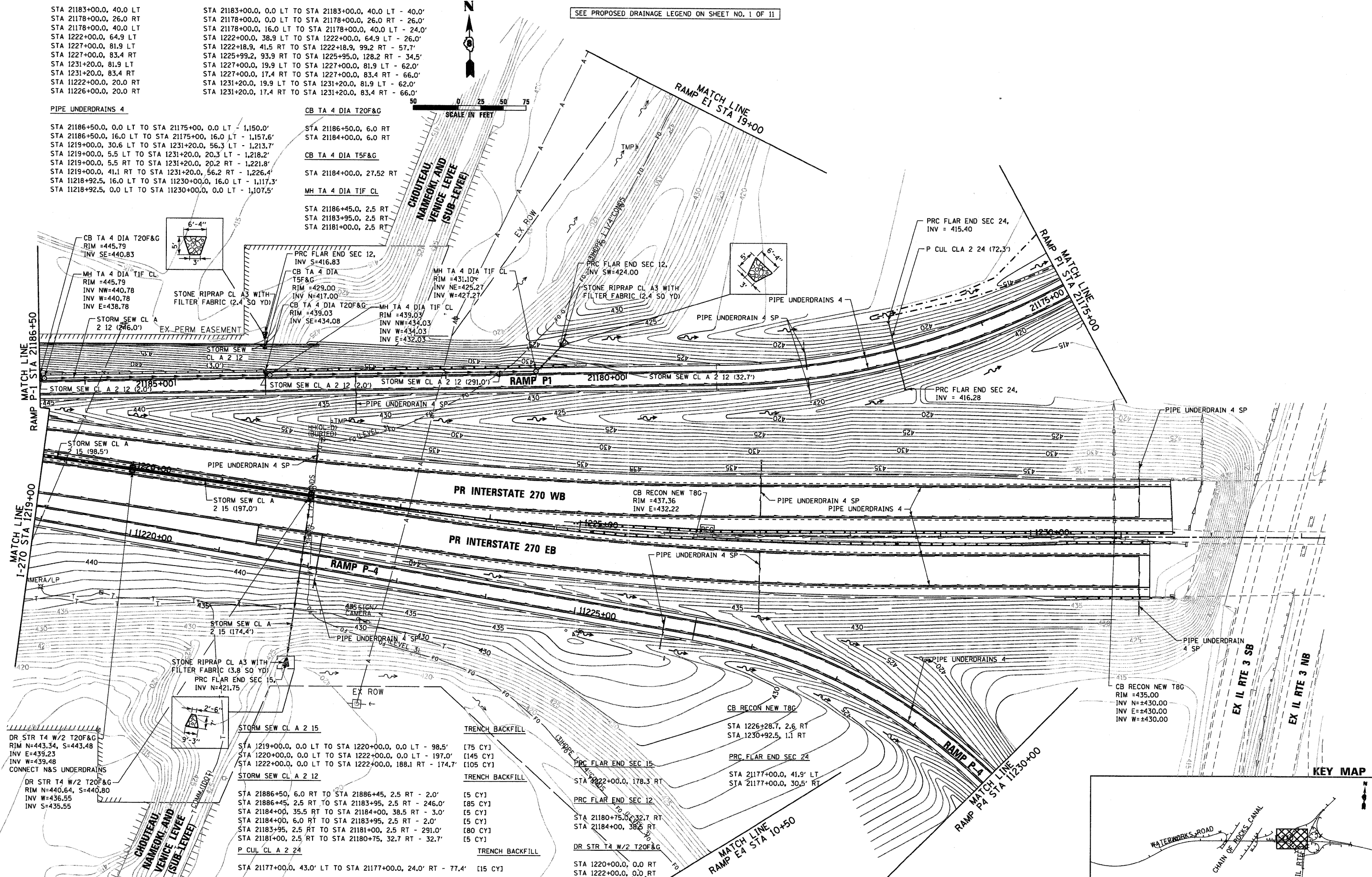
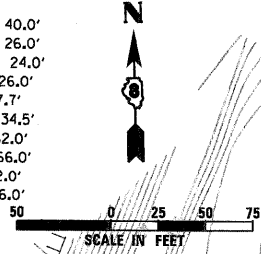
CB TA 4 DIA T5F&G

STA 21184+00.0, 27.52 RT

MH TA 4 DIA TIF CL

STA 21186+45.0, 2.5 RT
STA 21183+95.0, 2.5 RT
STA 21181+00.0, 2.5 RT

SEE PROPOSED DRAINAGE LEGEND ON SHEET NO. 1 OF 11



DR STR T4 W/2 T20F&G
RIM N=443.34, S=443.48
INV E=439.23
INV W=439.48
CONNECT N&S UNDERDRAINS

TRENCH BACKFILL
[75 CY]
[145 CY]
[105 CY]

TRENCH BACKFILL
[5 CY]
[85 CY]
[5 CY]
[180 CY]
[5 CY]

TRENCH BACKFILL
[15 CY]
[145 CY]
[105 CY]

TRENCH BACKFILL
[5 CY]
[85 CY]
[5 CY]
[180 CY]
[5 CY]

DR STR T4 W/2 T20F&G
RIM N=440.64, S=440.80
INV W=436.55
INV S=435.55

TRENCH BACKFILL
[5 CY]
[85 CY]
[5 CY]
[180 CY]
[5 CY]

TRENCH BACKFILL
[5 CY]
[85 CY]
[5 CY]
[180 CY]
[5 CY]

TRENCH BACKFILL
[5 CY]
[85 CY]
[5 CY]
[180 CY]
[5 CY]

TRENCH BACKFILL
[5 CY]
[85 CY]
[5 CY]
[180 CY]
[5 CY]

DR STR T4 W/2 T20F&G
RIM N=440.64, S=440.80
INV W=436.55
INV S=435.55

TRENCH BACKFILL
[5 CY]
[85 CY]
[5 CY]
[180 CY]
[5 CY]

TRENCH BACKFILL
[5 CY]
[85 CY]
[5 CY]
[180 CY]
[5 CY]

TRENCH BACKFILL
[5 CY]
[85 CY]
[5 CY]
[180 CY]
[5 CY]

TRENCH BACKFILL
[5 CY]
[85 CY]
[5 CY]
[180 CY]
[5 CY]

FILE NAME = DB76491-Sht-PrDrain86.dgn

USER NAME = EDean

DESIGNED - JWM

REVISED -

PLOT SCALE = 1:50

DRAWN - JWM

REVISED -

PLOT DATE = 3/18/11

CHECKED - MBL

REVISED -

DATE - 3/18/11

REVISED -

STATE OF ILLINOIS
DEPARTMENT OF TRANSPORTATION

PROPOSED DRAINAGE PLAN
INTERSTATE 270

SCALE: 1" = 50' SHEET NO. 6 OF 11 SHEETS STA. 1219+00 TO STA.

F.A.I. RTE. 270	SECTION 60-1B-1	COUNTY MADISON	TOTAL SHEETS 712	SHEET NO. 266
				CONTRACT NO. 76A91
ILLINOIS FED. AID PROJECT				

KEY MAP

