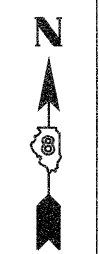


PART OF THE S 1/2 OF SEC. 30, T. 4 N., R. 9 W., OF THE 3RD PM, MADISON COUNTY, ILLINOIS



SPACE RESERVED FOR RECORDING OFFICER

SEE BASIS OF COORDINATES AND BEARINGS STATEMENT ON SHEET 2

PROP. CURVE PR-270-1
 PI STA. = 1173+56.70
 $\Delta = 30^\circ 01' 30''$ (RT)
 $D = 1^\circ 14' 44''$
 $R = 4,600.00'$
 $T = 1,233.64'$
 $L = 2,410.56'$
 $E = 162.55'$
 P.C. STA = 1161+23.06
 P.T. STA = 1185+33.62

8903012CPL-A

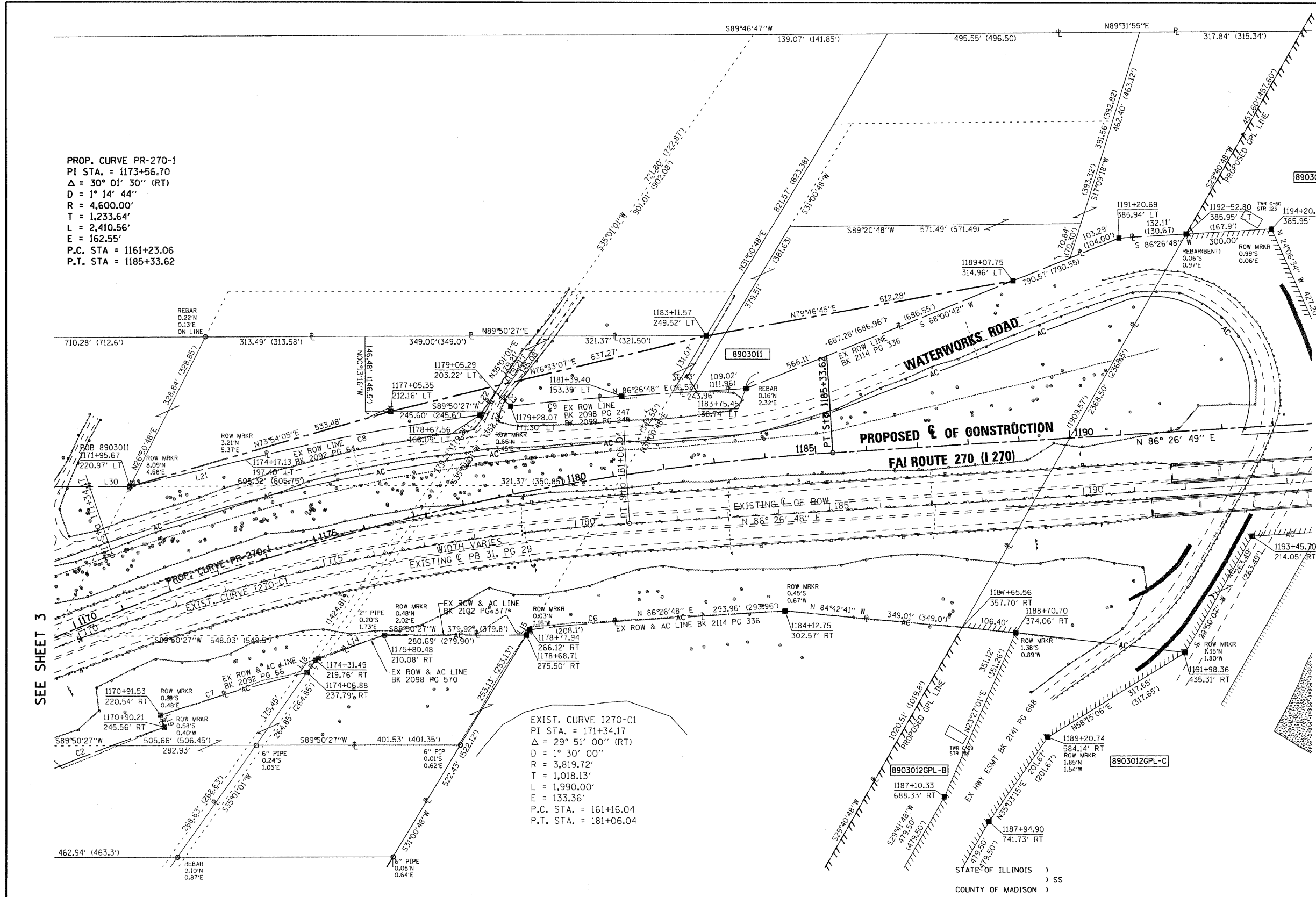
STATION	OFFSET	NORTH	EAST
1171+95.67	220.97' LT	764263.8824	302752.7584
1174+17.13	197.40' LT	764316.3382	302979.4703
1177+05.35	212.16' LT	764411.8117	303265.3170
1179+05.29	203.22' LT	764448.7629	303471.1623
1178+67.56	166.09' LT	764404.4922	303440.1978
1179+28.07	171.30' LT	764422.0773	303500.6361
1183+11.57	249.52' LT	764560.0185	303885.1174
1181+39.40	153.39' LT	764441.5840	303719.2663
1183+75.45	138.74' LT	764456.7038	303962.7573
1189+07.75	314.96' LT	764668.6632	304481.6862
1191+20.69	385.94' LT	764752.7055	304695.8214
1192+52.80	385.95' LT	764760.8930	304827.6739
1194+20.69	385.95' LT	764771.2984	304995.2447
1193+45.70	214.05' RT	764167.8036	304957.5747
1191+98.36	435.31' RT	763939.2399	304826.4882
1189+20.74	584.14' RT	763772.0963	304556.3688
1187+94.90	741.73' RT	763607.0074	304440.5394
1187+10.33	688.33' RT	763656.5483	304353.6735
1188+70.70	374.06' RT	763978.6724	304493.4040
1187+65.56	357.70' RT	763988.4798	304387.4532
1170+90.21	245.56' RT	763814.1967	302812.7253
1170+91.53	220.54' RT	763790.5086	302820.7174
1174+06.88	237.79' RT	763898.2728	303100.7728
1174+31.49	219.76' RT	763922.4759	303117.6833
1175+80.48	210.08' RT	763971.7520	303251.2429
1178+68.71	275.50' RT	763972.5322	303531.9330
1178+77.94	266.12' RT	763983.4916	303538.5215
1184+12.75	302.57' RT	764020.6485	304039.9308

LINE	LENGTH	BEARING
L14	142.36' (142.36')	N69°44'55"E
L15	12.79'	S31°00'48"W
L18	29.53' (29.93')	N34°56'30"E
L19	25.00' (25')	S18°38'38"E
L21	232.70'	S76°58'21"W
L22	54.02' (54.02')	S34°58'13"W
L23	39.76'	N47°50'33"W
L30	159.78'	N89°50'27"E

CURVE	LENGTH	RADIUS	CHORD BEARING	CHORD
C2	417.01'	3599.72'	S68°02'15"W	416.78'
C6	208.90' (208.1')	3629.72'	S84°47'53"W	208.87'
C7	300.15' (300.15')	3624.72'	S73°43'42"W	300.07'
C8	469.35' (469.35')	4059.72'	S79°10'05"W	469.09'
C9	219.53'	4069.72'	S84°54'05"W	219.50'

SEE SHEET 3

SEE SHEET 5



EXIST. CURVE I270-C1
 PI STA. = 171+34.17
 $\Delta = 29^\circ 51' 00''$ (RT)
 $D = 1^\circ 30' 00''$
 $R = 3,819.72'$
 $T = 1,018.13'$
 $L = 1,990.00'$
 $E = 133.36'$
 P.C. STA. = 161+16.04
 P.T. STA. = 181+06.04

STATE OF ILLINOIS)
) SS
 COUNTY OF MADISON)

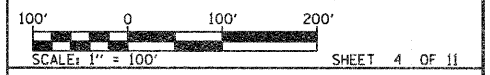
I, GREGORY S. McVICAR, AN ILLINOIS PROFESSIONAL LAND SURVEYOR, STATE THAT I HAVE SURVEYED THE PLAT OF HIGHWAY SHOWN HEREON AND THAT THIS PROFESSIONAL SERVICE CONFORMS TO THE CURRENT ILLINOIS MINIMUM STANDARDS FOR A BOUNDARY SURVEY FOR THE PROPOSED PARCEL(S) TO BE ACQUIRED BY THE STATE OF ILLINOIS, DEPARTMENT OF TRANSPORTATION, SHOWN HEREON.

DATED _____
 GREGORY S. McVICAR, PLS NO. 3512
 LICENSE EXPIRATION DATE: 11/30/2012



SHERRILL ASSOCIATES, INC.
 Engineers - Surveyors - Planners
 Professional Design Firm Number 184-001238
 316 North Main Street, 2727 Lemay Ferry Road
 Edwardsville, IL 62025 St. Louis, MO 63125

ILLINOIS DEPARTMENT OF TRANSPORTATION
PLAT OF HIGHWAYS
 FAI ROUTE 270 (I 270)
 SECTION 60-1B-1
 MADISON COUNTY
 JOB NO. R-98-003-09
 STATION 1170+00 TO STATION 1194+00



ILLINOIS DEPARTMENT OF TRANSPORTATION
 DIVISION OF HIGHWAYS/REGION 5/DISTRICT B
 1102 EASTPORT PLAZA DRIVE
 COLLINGSVILLE, ILLINOIS 62234-6198

F.A.I. RTE.	SECTION	COUNTY	TOTAL SHEETS	SHEET NO.
270	60-1B-1	MADISON	712	290

CONTRACT NO. 76A91
 FED. ROAD DIST. NO. ILLINOIS FED. AID PROJECT

SEE TOTAL HOLDING AREA SOURCE TABLE ON SHEET 2

PARCEL NO.	OWNER	TOTAL HOLDING	FEE SIMPLE ACQUISITION		REMAINDER	PERMANENT TAX NUMBER	PROPERTY ACQUIRED BY
		ACRES	ACRES	SQ. FT.			
8903011	CITY OF MADISON, A MUNICIPAL CORPORATION 251950, 252465	17.7687	1.9553	85,171	15,8134	18-1-14-30-00-000-005 18-1-14-30-00-000-005,001 18-1-14-30-00-000-005,002 18-1-14-30-03-301-012 18-1-14-30-03-301-013 18-1-14-30-03-301-014	

COMPLETION DATE OF FIELD WORK PERFORMED	
LAND SURVEY: 4/2/09	ROW STAKING: