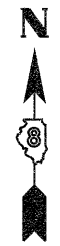
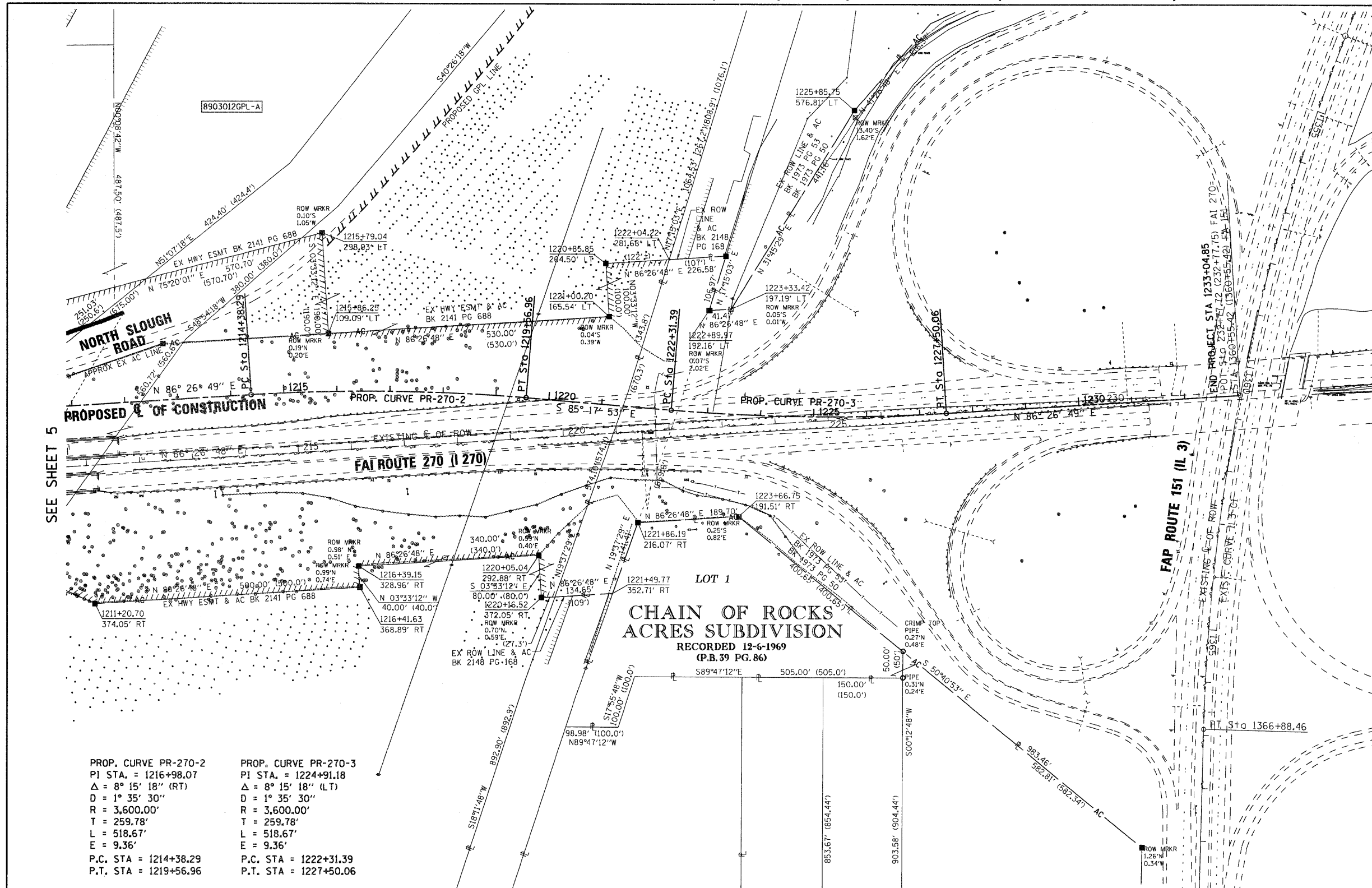


PART OF THE SE 1/4 OF SEC. 29, T. 4 N., R. 9 W., OF THE 3RD PM, MADISON COUNTY, ILLINOIS



SPACE RESERVED FOR RECORDING OFFICER

EXIST. CURVE IL3-C1
 PI STA. = 1353+94.79
 $\Delta = 40^\circ 35' 54''$ (LT)
 $D = 1^\circ 30' 00''$
 $R = 3,819.72'$
 $T = 1,412.89'$
 $L = 2,706.56'$
 $E = 252.94'$
 P.C. STA. = 1339+81.90
 P.T. STA. = 1366+88.46



SEE SHEET 5

PROP. CURVE PR-270-2
 PI STA. = 1216+98.07
 $\Delta = 8^\circ 15' 18''$ (RT)
 $D = 1^\circ 35' 30''$
 $R = 3,600.00'$
 $T = 259.78'$
 $L = 518.67'$
 $E = 9.36'$
 P.C. STA. = 1214+38.29
 P.T. STA. = 1219+56.96

PROP. CURVE PR-270-3
 PI STA. = 1224+91.18
 $\Delta = 8^\circ 15' 18''$ (LT)
 $D = 1^\circ 35' 30''$
 $R = 3,600.00'$
 $T = 259.78'$
 $L = 518.67'$
 $E = 9.36'$
 P.C. STA. = 1222+31.39
 P.T. STA. = 1227+50.06

LOT 1
**CHAIN OF ROCKS
 ACRES SUBDIVISION**
 RECORDED 12-6-1969
 (P.B. 39 PG. 86)

SEE BASIS OF COORDINATES AND BEARINGS STATEMENT ON SHEET 2

COORDINATE TABLE			
STATION	OFFSET	NORTH	EAST
1211+20.70	374.05' RT	764118.1192	306739.0787
1216+41.63	368.89' RT	764149.1074	307238.1175
1216+39.15	328.96' RT	764189.0305	307235.6384
1220+05.04	292.88' RT	764210.1025	307574.9848
1220+16.52	372.05' RT	764130.2563	307579.9429
1221+49.77	352.71' RT	764138.6011	307714.3294
1221+86.19	216.07' RT	764271.8007	307761.8241
1223+66.75	191.51' RT	764283.5574	307951.1555
1225+85.75	576.81' LT	765048.5393	308169.1638
1222+89.97	192.16' LT	764670.8609	307895.6336
1220+85.85	264.50' LT	764758.9806	307701.2100
1221+00.20	165.54' LT	764659.1729	307707.4076
1215+86.25	109.09' LT	764626.3254	307178.4265
1215+79.04	298.93' LT	764815.9601	307166.6510
1222+04.22	281.68' LT	764766.3935	307820.5886
1223+33.42	197.19' LT	764673.4274	307936.9655

STATE OF ILLINOIS)
) SS
 COUNTY OF MADISON)

I, GREGORY S. McVICAR, AN ILLINOIS PROFESSIONAL LAND SURVEYOR,
 STATE THAT I HAVE SURVEYED THE PLAT OF HIGHWAY SHOWN HEREON AND THAT THIS
 PROFESSIONAL SERVICE CONFORMS TO THE CURRENT ILLINOIS MINIMUM STANDARDS FOR
 A BOUNDARY SURVEY FOR THE PROPOSED PARCEL(S) TO BE ACQUIRED BY THE STATE OF
 ILLINOIS, DEPARTMENT OF TRANSPORTATION, SHOWN HEREON.

DATED _____
 GREGORY S. McVICAR, PLS NO. 3512
 LICENSE EXPIRATION DATE: 11/30/2012



SHERRILL ASSOCIATES, INC.
 Engineers - Surveyors - Planners
 Professional Design Firm Number 184-001238
 816 North Main Street 2727 Lemay Ferry Road
 Edwardsville, IL 62025 St. Louis, MO 63125

ILLINOIS DEPARTMENT OF TRANSPORTATION
PLAT OF HIGHWAYS
 FAI ROUTE 270 (I 270)
 SECTION 60-1B-1
 MADISON COUNTY
 JOB NO. R-98-003-09
 STATION 1211+00 TO STATION 1233+04.85

100' 0 100' 200'
 SCALE: 1" = 100' SHEET 6 OF 11

F.A.I. RTE.	SECTION	COUNTY	TOTAL SHEETS	SHEET NO.
270	60-1B-1	MADISON	712	292

ILLINOIS DEPARTMENT OF TRANSPORTATION
 DIVISION OF HIGHWAYS/REGION 5/DISTRICT 8
 1102 EASTPORT PLAZA DRIVE
 COLLINSVILLE, ILLINOIS 62234-6198

COMPLETION DATE OF FIELD WORK PERFORMED
 LAND SURVEY: 4/2/09 ROW STAKING:

FED. ROAD DIST. NO. - ILLINOIS FED. AID PROJECT
 CONTRACT NO. 76A91