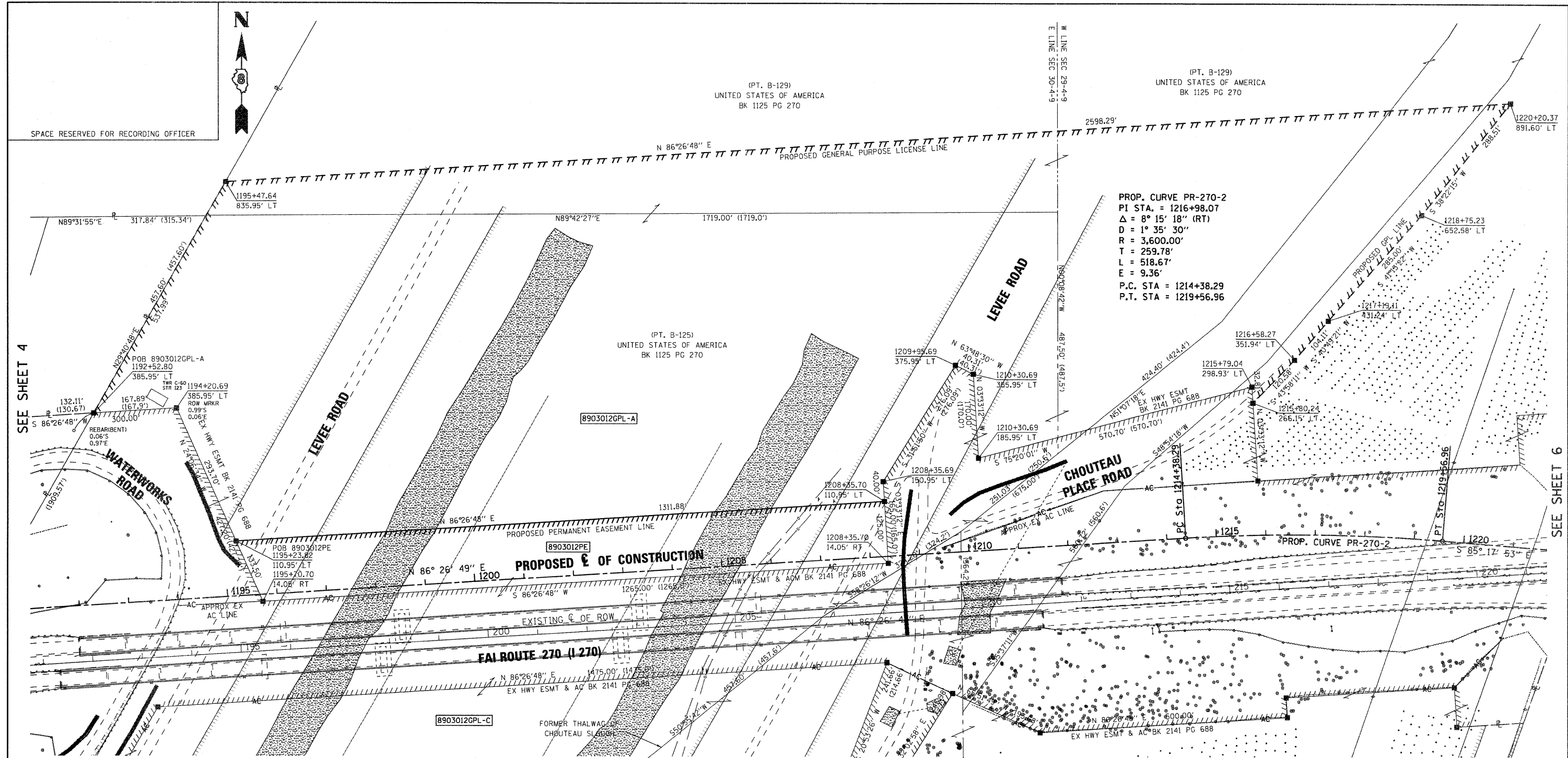


PART OF THE SE 1/4 OF SEC. 30, T. 4 N., R. 9 W., OF THE 3RD PM, MADISON COUNTY, ILLINOIS



PROP. CURVE PR-270-2  
 PI STA. = 1216+98.07  
 Δ = 8° 15' 18" (RT)  
 D = 1° 35' 30"  
 R = 3,600.00'  
 T = 259.78'  
 L = 518.67'  
 E = 9.36'  
 P.C. STA = 1214+38.29  
 P.T. STA = 1219+56.96

SEE SHEET 4

SEE SHEET 6

SEE BASIS OF COORDINATES AND BEARINGS STATEMENT ON SHEET 2

SEE SHEET 8

COORDINATE TABLE			
STATION	OFFSET	NORTH	EAST
1192+52.80	385.95' LT	764760.8930	304827.6739
1194+20.69	385.95' LT	764771.2984	304995.2447
1195+47.64	835.95' LT	765228.3014	305094.0635
1195+23.82	110.95' LT	764503.2184	305115.2149
1195+70.70	14.05' RT	764381.3638	305169.7469
1208+35.70	14.05' RT	764459.7639	306432.3151
1208+35.70	110.95' LT	764584.5236	306424.5680
1209+95.69	375.95' LT	764858.9304	306567.8367
1208+35.69	150.95' LT	764624.4467	306422.0890
1210+30.69	185.95' LT	764671.4648	306614.5449
1210+30.69	355.95' LT	764841.1380	306604.0089
1215+79.04	298.93' LT	764815.9601	307166.6510
1216+58.27	351.94' LT	764869.9926	307252.3995
1215+80.24	266.15' LT	764783.2111	307168.6846
1217+19.11	431.24' LT	764948.7769	307320.4582
1218+75.23	652.58' LT	765163.1377	307508.2677
1220+20.37	891.60' LT	765389.3341	307687.3607

SEE SHEET 8 FOR GPL-B & C

PARCEL NO.	OWNER	TOTAL HOLDING ACRES	GENERAL PURPOSE LICENSE		LICENSE PURPOSE	EASEMENTS		PERMANENT TAX NUMBER	PROPERTY ACQUIRED BY
			ACRES	SO. FT.		PE = PERMANENT TE = TEMPORARY ACRES	EASEMENT PURPOSE SO. FT.		
8903012	UNITED STATES OF AMERICA FILE NUMBERS 252646 & 251945	N/A	GPL-A = 37.3423	GPL-A = 1,626,632	CONSTRUCTION	PE = 3.6973	PE = 161,055	18-1-14-29-00-000-001 18-1-14-30-00-000-007 18-1-14-30-00-000-007.001	

STATE OF ILLINOIS )  
 ) SS  
 COUNTY OF MADISON )

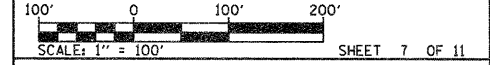
I, GREGORY S. McVICAR, AN ILLINOIS PROFESSIONAL LAND SURVEYOR, STATE THAT I HAVE SURVEYED THE PLAT OF HIGHWAY SHOWN HEREON AND THAT THIS PROFESSIONAL SERVICE CONFORMS TO THE CURRENT ILLINOIS MINIMUM STANDARDS FOR A BOUNDARY SURVEY FOR THE PROPOSED PARCEL(S) TO BE ACQUIRED BY THE STATE OF ILLINOIS, DEPARTMENT OF TRANSPORTATION, SHOWN HEREON.

DATED \_\_\_\_\_  
 GREGORY S. McVICAR, PLS NO. 3512  
 LICENSE EXPIRATION DATE: 11/30/2012



**SHERRILL ASSOCIATES, INC.**  
 Engineers - Surveyors - Planners  
 Professional Design Firm Number 184-001288  
 316 North Main Street, Edwardsville, IL 62025  
 2727 Lemay Ferry Road, St. Louis, MO 63125

ILLINOIS DEPARTMENT OF TRANSPORTATION  
**PLAT OF HIGHWAYS**  
 FAI ROUTE 270 (I 270)  
 SECTION 60-1B-1  
 MADISON COUNTY  
 JOB NO. R-98-003-09  
 STATION 1191+00 TO STATION 1221+00



ILLINOIS DEPARTMENT OF TRANSPORTATION  
 DIVISION OF HIGHWAYS/REGION 5/DISTRICT 8  
 1102 EASTPORT PLAZA DRIVE  
 COLLINGSVILLE, ILLINOIS 62234-6198

F.A.I. RTE.	SECTION	COUNTY	TOTAL SHEETS	SHEET NO.
270	60-1B-1	MADISON	712	293

CONTRACT NO. 76A91

COMPLETION DATE OF FIELD WORK PERFORMED	
LAND SURVEY:	4/2/09
ROW STAKING:	