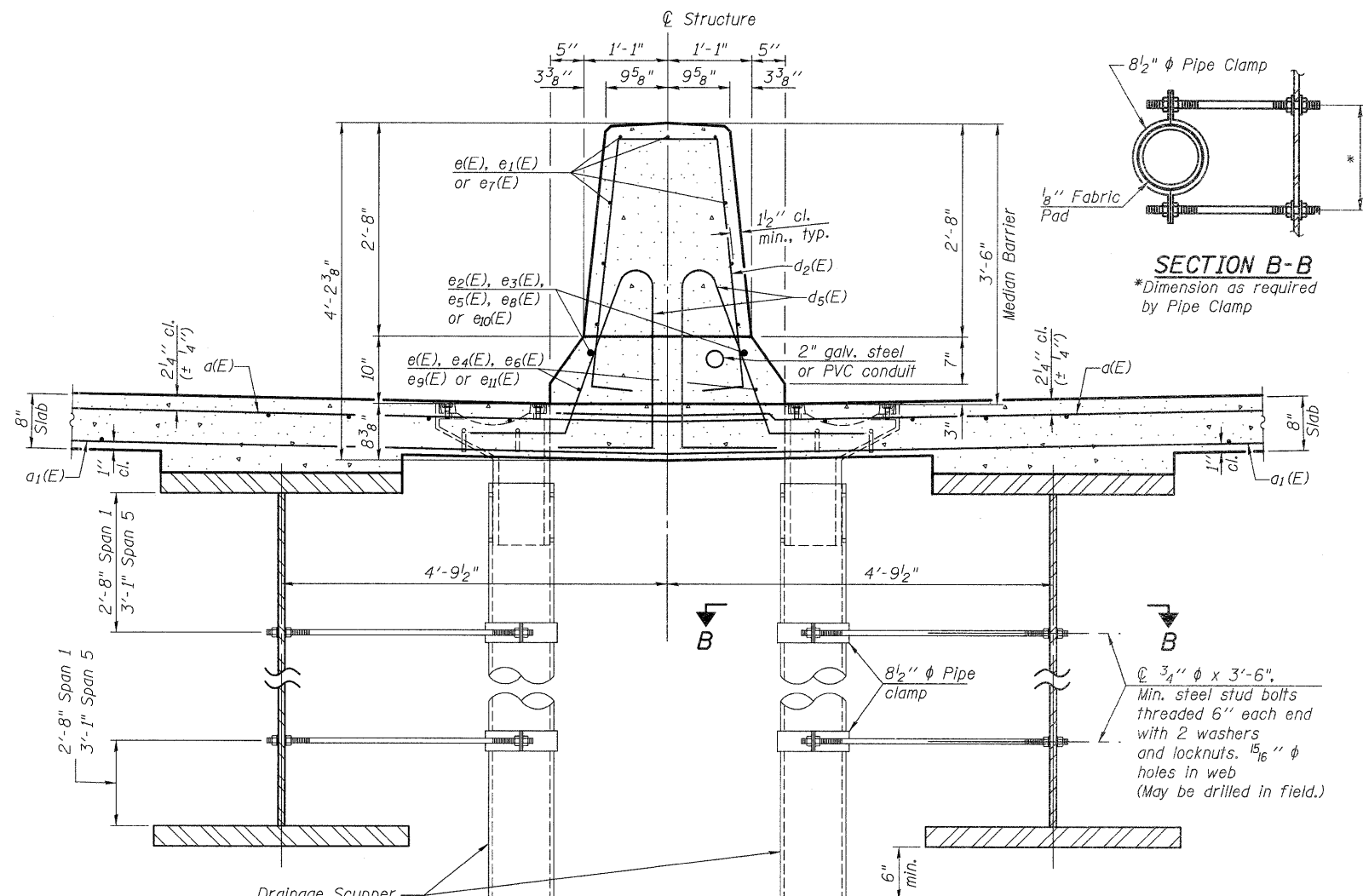
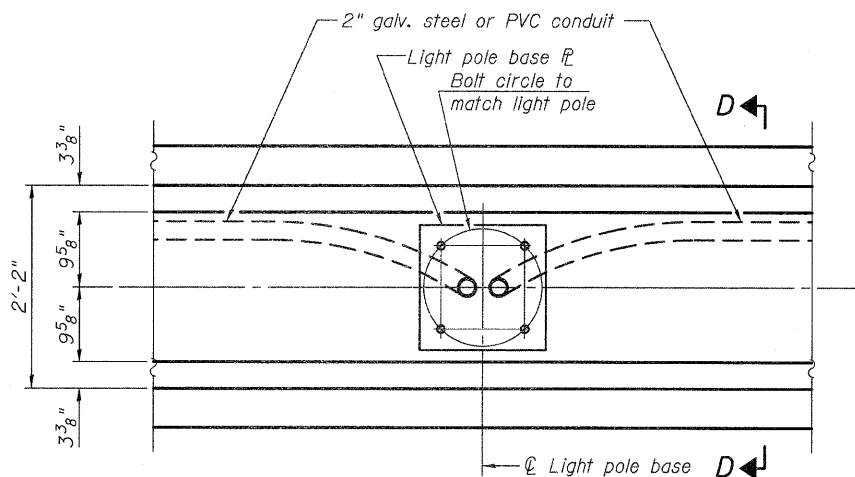


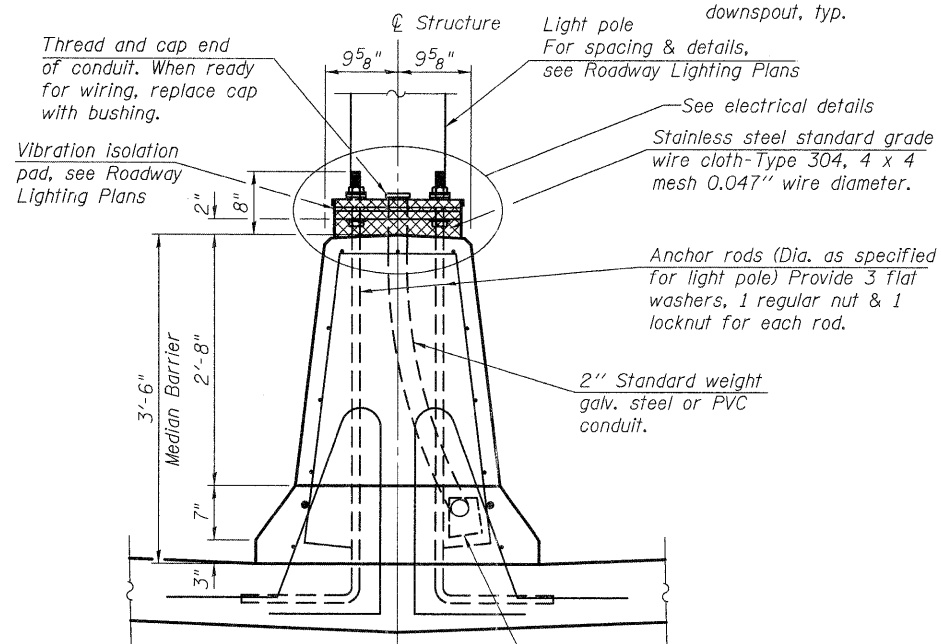
SECTION THRU PARAPET



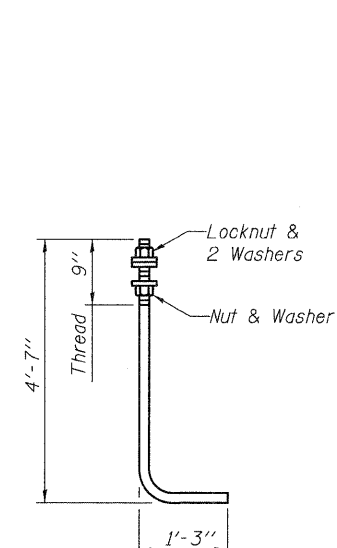
SECTION THRU MEDIAN BARRIER



PLAN

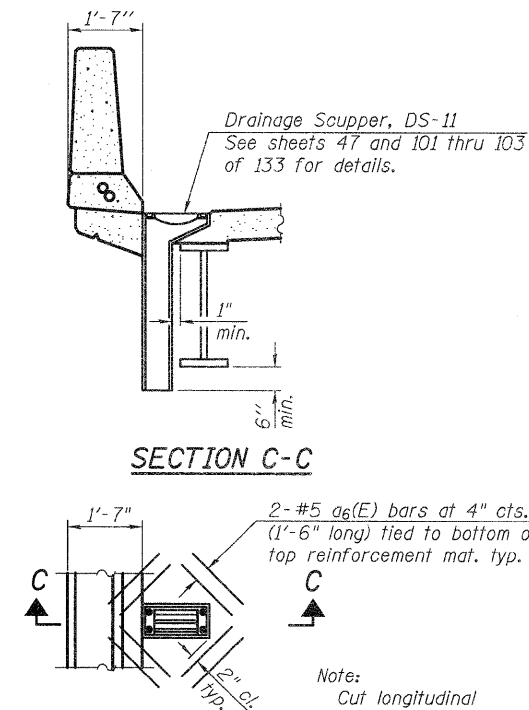


SECTION D-D



ANCHOR ROD

Diameter as specified for light poles. (ASTM F 1554 Grade 105)



SECTION C-C

PLAN

Note: Cut longitudinal reinforcement to clear drainage scuppers.

4/20/2011 4:48:34 PM c:\pwworking\hdm\c0549104\0600345-76A91-039-SDT.dgn jmg



USER NAME = jmg	DESIGNED - BWC	REVISED - LGP 4/20/2011
FILE NAME = 0600345-76A91-039-SDT.DGN	CHECKED - LGP	REVISED -
PLOT SCALE = NONE	DRAWN - JM	REVISED -
PLOT DATE = 3/18/2011	CHECKED - BSK	REVISED -

**STATE OF ILLINOIS
DEPARTMENT OF TRANSPORTATION**

**SUPERSTRUCTURE DETAILS
STRUCTURE NO. 060-0345**

BRIDGE SHEET NO. 39 OF 133 SHEETS

F.A.I. RTE.	SECTION	COUNTY	TOTAL SHEETS	SHEET NO.
270	60-1B-1	MADISON	712	418
CONTRACT NO. 76A91				
ILLINOIS FED. AID PROJECT				