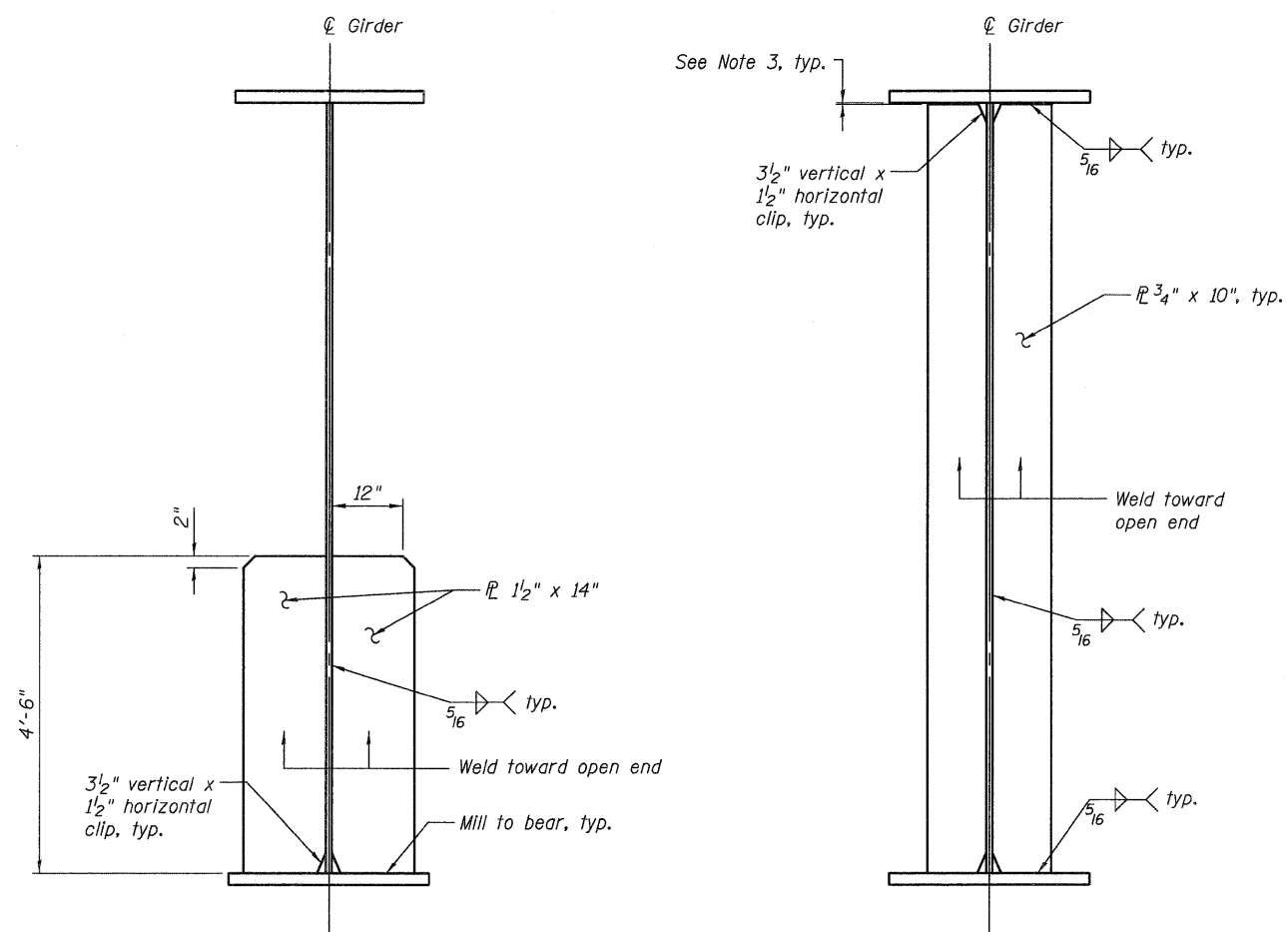


AT ABUTMENTS

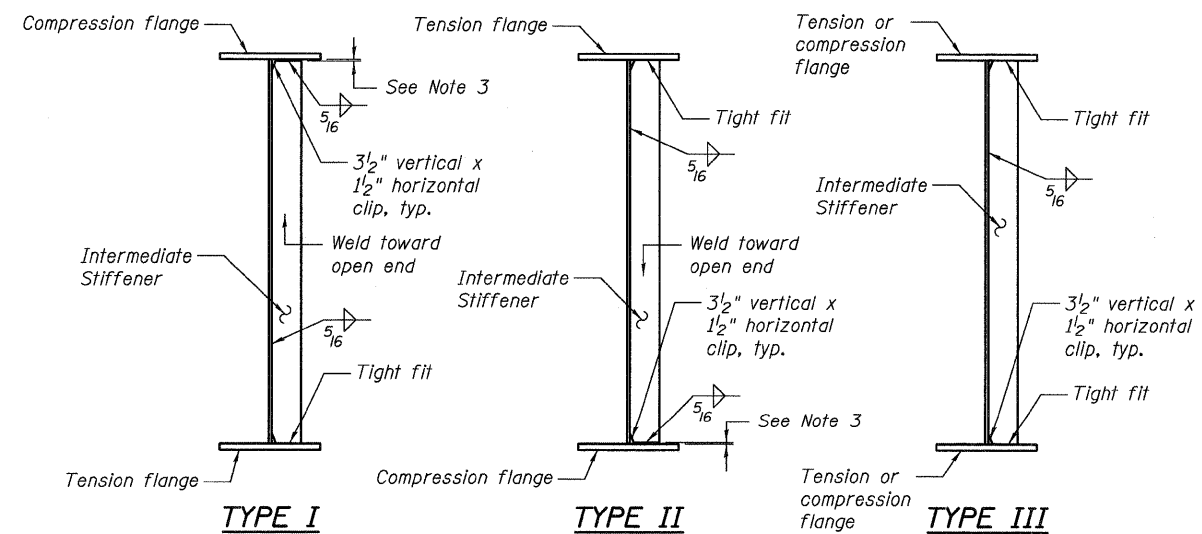
AT PIERS

BEARING AND JACKING STIFFENER DETAILS

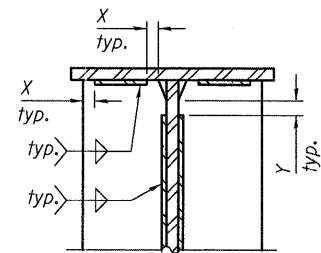


AUXILIARY BEARING STIFFENER DETAIL
(at Piers 1 & 4)

CROSS FRAME AND INSPECTION WALKWAY CONNECTION PLATE DETAIL
(Interior girder shown)



INTERMEDIATE STIFFENER DETAILS
(Exterior girders shown)



"X" = End weld $\frac{1}{4}'' \pm \frac{1}{8}''$ from end of plate or flange
 "Y" = End weld $\frac{1}{2}'' \pm \frac{1}{4}''$ from end of plate

STIFFENER AND CONNECTION PLATE WELD TERMINATION DETAILS

NOTES:

1. Bearing, auxiliary bearing, jacking stiffeners, and inspection walkway connection plate to be vertical under full dead load, unless noted otherwise.
2. Weld at top and bottom when bearing stiffener.
3. $\frac{1}{8}''$ maximum clearance before welding.
4. Connection plates required only on inside face of exterior girder.
5. Type I to be used when bottom flange denoted as NTR.
6. Type II to be used when top flange denoted as NTR.
7. Type III to be used when top and bottom flanges denoted as NTR.

3/15/2011 2:17:04 PM
 c:\pwworking\king.com\d0549104\0600345-76A91-062-FRD.dgn
 jmgus

| | | | | | | | | | | | |
|-----------------------------------|---------------------------------------|----------------|-----------|---|--|--|---------------------------|---------|---------|--------------|-----------|
| | USER NAME = jmgus | DESIGNED - BWC | REVISED - | STATE OF ILLINOIS DEPARTMENT OF TRANSPORTATION | STEEL DETAILS - STIFFENERS & CONNECTION PLATES STRUCTURE NO. 060-0345 | | F.A.I. RTE. | SECTION | COUNTY | TOTAL SHEETS | SHEET NO. |
| | FILE NAME = 0600345-76A91-062-FRD.DGN | CHECKED - LGP | REVISED - | | | | 270 | 60-1B-1 | MADISON | 712 | 441 |
| | PLOT SCALE = NONE | DRAWN - HG | REVISED - | | | | CONTRACT NO. 76A91 | | | | |
| | PLOT DATE = 3/18/2011 | CHECKED - BSK | REVISED - | | | | ILLINOIS FED. AID PROJECT | | | | |
| BRIDGE SHEET NO. 62 OF 133 SHEETS | | | | | | | | | | | |