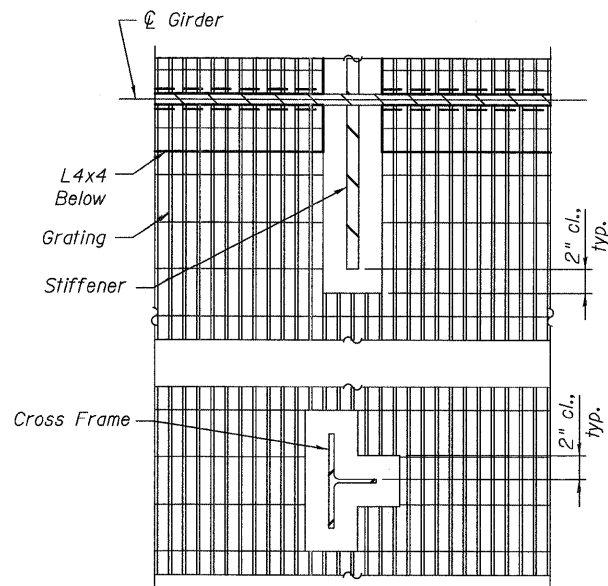
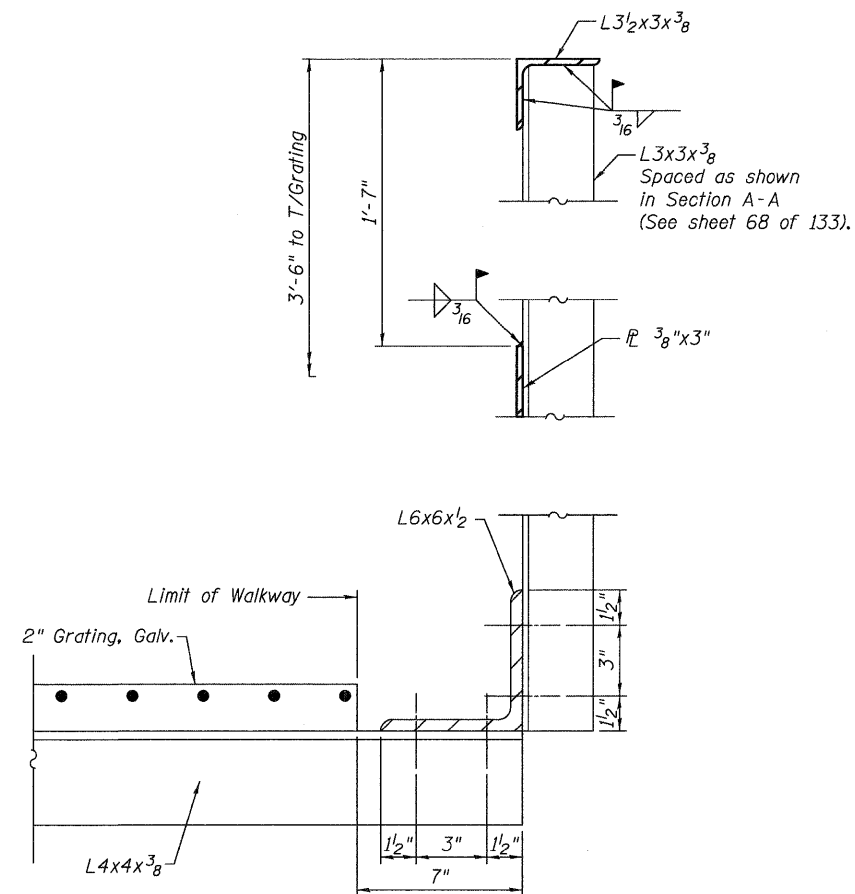


**TYPICAL DETAIL AT
WEB SPLICE PLATE**

* Provide one additional bolt on each side of web splice plate, typ. all splice locations.



**TYPICAL DETAIL AT
STIFFENER AND CROSS BRACE**



SECTION H-H

FILE NAME = ...0600345-76491-071-FRD.dgn

USER NAME = \$USER\$

DESIGNED - RAR

REVISED -

CHECKED - GEK

REVISED -

PLOT SCALE = NONE

DRAWN - PMH

REVISED -

PLOT DATE = 3/18/11

CHECKED - RAR

REVISED -



**STATE OF ILLINOIS
DEPARTMENT OF TRANSPORTATION**

**STEEL DETAILS - INSPECTION WALKWAY
STRUCTURE NO. 060-0345**

BRIDGE SHEET NO. 71 OF 133 SHEETS

F.A.I. RTE.	SECTION	COUNTY	TOTAL SHEETS	SHEET NO.
270	60-1B-1	MADISON	712	450
				CONTRACT NO. 76A91
ILLINOIS FED. AID PROJECT				