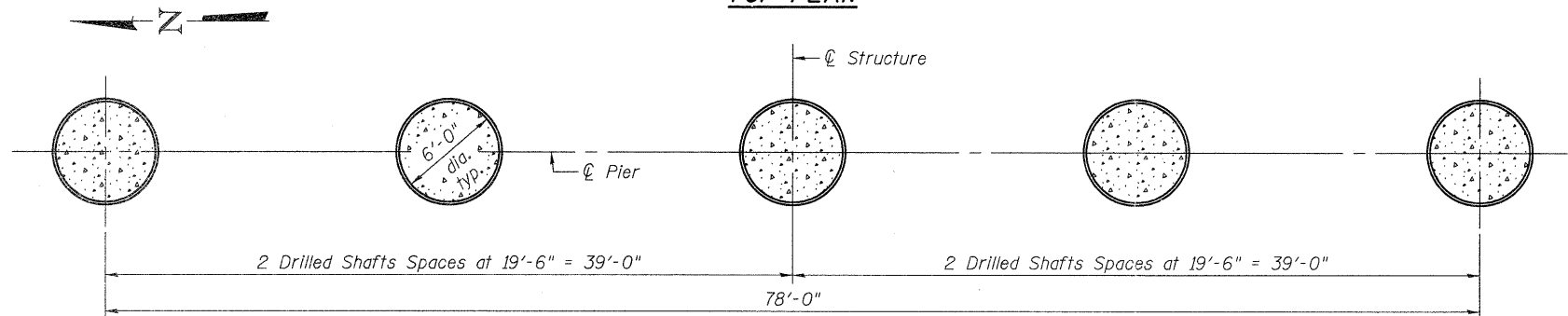
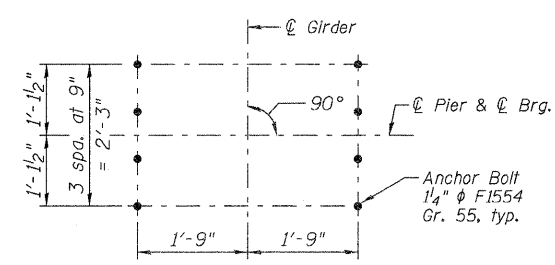


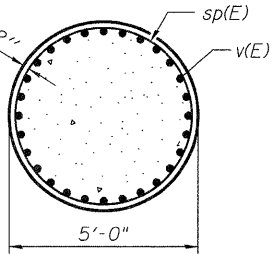
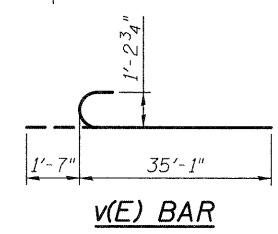
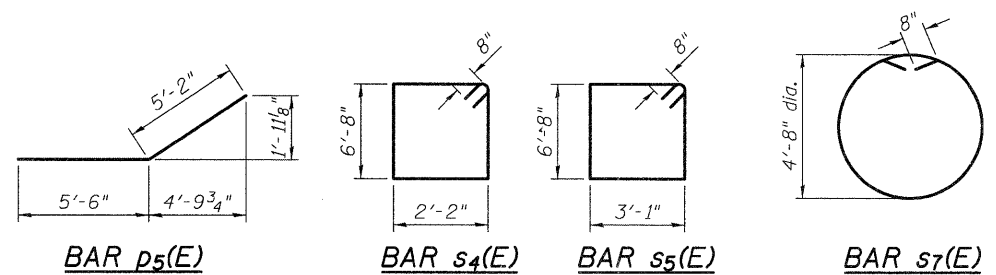
TOP PLAN



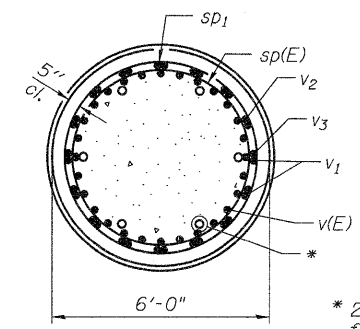
DRILLED SHAFT LAYOUT



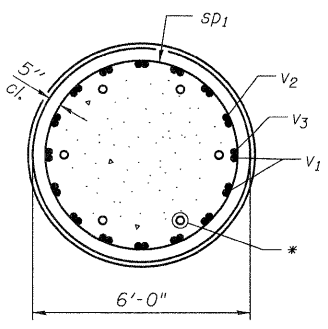
TYPICAL ANCHOR BOLT LAYOUT



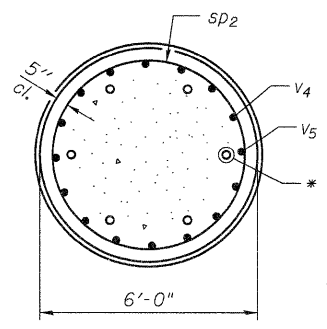
SECTION C-C



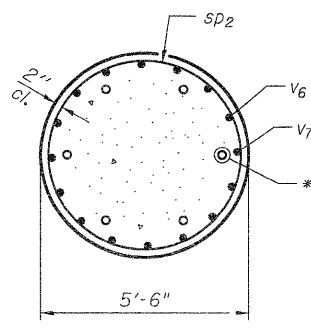
SECTION D-D



SECTION E-E



SECTION F-F



SECTION G-G

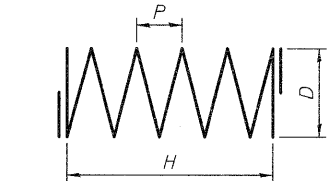
A & B DIMENSIONS

Bar	A	B
s(E)	3'-1"	4'-11"
s1(E)	2'-2"	4'-11"
s2(E)	6'-8"	1'-0"
s3(E)	5'-8"	1'-0"
s6(E)	5'-8"	2'-6"
u(E)	5'-6"	8'-0"

A & B DIMENSIONS

Bar	A	B
p(E)	48'-3"	2'-0"
p1(E)	57'-0"	2'-0"

BARS



SPIRALS

H, D & P DIMENSIONS

Bar	H	D	P	L*
sp(E)	26'-5"	4'-8"	4"	1,206'
sp1	40'-0"	5'-2"	3"	2,646'
sp2	115'-0"	5'-2"	6"	3,782'

* Length calculated as continuous bar (ignoring splices).

PIER 1 BILL OF MATERIAL

Bar	No.	Size	Length	Shape
h(E)	16	#8	50'-8"	—
h1(E)	4	#8	48'-2"	—
p(E)	22	#11	50'-3"	—
p1(E)	22	#11	59'-0"	—
p2(E)	20	#11	36'-8"	—
p3(E)	20	#11	57'-6"	—
p4(E)	22	#11	18'-10"	—
p5(E)	20	#8	10'-8"	—
s(E)	60	#6	12'-11"	□
s1(E)	120	#6	12'-0"	□
s2(E)	80	#6	8'-8"	□
s3(E)	40	#6	7'-8"	□
s4(E)	240	#6	19'-0"	□
s5(E)	120	#6	20'-10"	□
s6(E)	78	#6	10'-8"	□
s7(E)	35	#6	18'-0"	○
sp(E)	5	#6	1206'-0"	~
sp1	5	#6	2646'-0"	~
sp2	5	#6	3782'-0"	~
u(E)	8	#8	21'-6"	□
v(E)	140	#11	36'-8"	—
v1	80	#11	50'-0"	—
v2	40	#11	55'-0"	—
v3	40	#11	57'-6"	—
v4	40	#11	51'-4"	—
v5	40	#11	51'-4"	—
v6	40	#11	48'-8"	—
v7	40	#11	46'-2"	—
Structure Excavation		Cu. Yd.	41.3	
Concrete Structures		Cu. Yd.	235.4	
Reinforcement Bars		Pound	135,410	
Reinforcement Bars, Epoxy Coated		Pound	82,650	
Permanent Casing		Foot	700.0	
Drilled Shaft in Soil		Cu. Yd.	733.1	
Drilled Shaft in Rock		Cu. Yd.	66.0	
Crosshole Sonic Logging		Each	5	
Mechanical Splicers		Each	160	

Bars indicated thus 1 x 4-#8 etc. indicates 1 line of bars with 4 lengths per line.

* 2" I.D. Steel Pipe for Crosshole Sonic Logging, typ. (6 each shaft)

c:\pwworking\oma\0549104\0600345-76A91-091-PRD.dgn 4/20/2011 4:48:46 PM jmliguis



USER NAME = jmliguis	DESIGNED - PJC	REVISED - LGP 4/20/2011
FILE NAME = 0600345-76A91-091-PRD.DGN	CHECKED - CAS	REVISED -
PLOT SCALE = NONE	DRAWN - JM	REVISED -
PLOT DATE = 3/18/2011	CHECKED - BSK	REVISED -

STATE OF ILLINOIS DEPARTMENT OF TRANSPORTATION

PIER 1 - PLANS & BILL OF MATERIAL
STRUCTURE NO. 060-0345

BRIDGE SHEET NO. 91 OF 133 SHEETS

F.A.I. RTE.	SECTION	COUNTY	TOTAL SHEETS	SHEET NO.
270	60-1B-1	MADISON	712	470
				CONTRACT NO. 76A91
ILLINOIS FED. AID PROJECT				