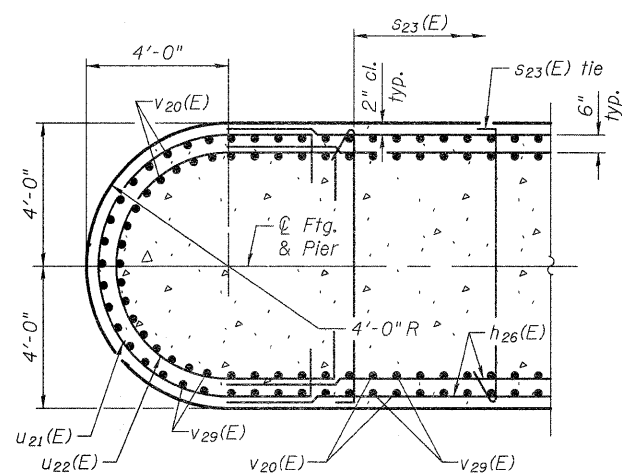
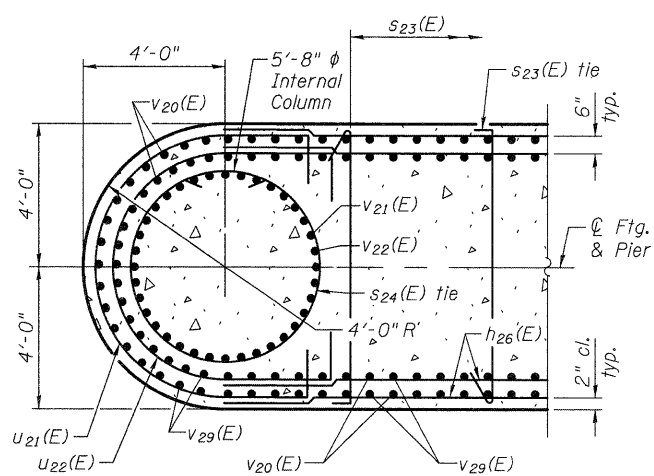


**PIER 3
BILL OF MATERIAL**

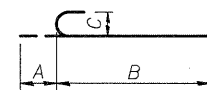
Bar	No.	Size	Length	Shape
h20(E)	2	#8	58'-8"	—
h21(E)	28	#8	50'-2"	—
h22(E)	4	#8	48'-2"	—
h23(E)	4	#8	45'-11"	—
h24(E)	4	#8	43'-6"	—
h25(E)	4	#8	41'-10"	—
h26(E)	528	#8	36'-10"	—
h27(E)	106	#8	60'-0"	—
h28(E)	106	#8	59'-0"	—
n20(E)	220	#11	56'-7"	—
n21(E)	440	#11	51'-4"	—
n22(E)	36	#11	55'-0"	—
n23(E)	36	#11	57'-6"	—
n24(E)	24	#11	55'-0"	—
n25(E)	220	#11	59'-1"	—
p20(E)	16	#6	58'-8"	—
p21(E)	64	#11	23'-10"	—
p22(E)	32	#6	18'-10"	—
p23(E)	18	#8	16'-3"	—
s20(E)	104	#6	41'-0"	□
s21(E)	176	#6	18'-10"	□
s22(E)	88	#6	19'-5"	□
s23(E)	4,128	#4	8'-5"	□
s24(E)	230	#5	21'-0"	□
s25(E)	52	#6	13'-2"	□
sp20	10	#6	2322'-0"	~
sp22	10	#6	1867'-0"	~
t20(E)	144	#11	33'-8"	—
t21(E)	18	#8	32'-4"	—
t22(E)	128	#11	33'-8"	—
u20(E)	18	#6	20'-1"	—
u21(E)	132	#8	24'-0"	—
u22(E)	132	#8	24'-0"	—
u23(E)	106	#8	21'-0"	—
u24(E)	106	#8	20'-6"	—
v20(E)	220	#11	46'-7"	—
v21(E)	36	#11	35'-0"	—
v22(E)	36	#11	32'-6"	—
v23	160	#11	32'-7"	—
v24	160	#11	57'-7"	—
v25	80	#11	57'-7"	—
v26	80	#11	55'-1"	—
v29(E)	220	#11	44'-1"	—
v30	80	#11	38'-0"	—
v31	80	#11	40'-6"	—
w20(E)	36	#8	44'-3"	—
w21(E)	36	#8	46'-2"	—
w22(E)	44	#8	46'-2"	—
w23(E)	44	#8	10'-11"	—
w24(E)	18	#8	13'-7"	—
Cofferdam Excavation	Cu. Yd.		8,560	
Cofferdam (Location-2)	Each		1	
Concrete Structures	Cu. Yd.		3,173.0	
Seal Coat Concrete	Cu. Yd.		3,050.6	
Reinforcement Bars	Pound		220,830	
Reinforcement Bars, Epoxy Coated	Pound		644,100	
Permanent Casing	Foot		760.0	
Drilled Shaft in Soil	Cu. Yd.		795.9	
Drilled Shaft in Rock	Cu. Yd.		105.6	
Crosshole Sonic Logging	Each		10	
Mechanical Splicers	Each		1,096	



SECTION C-C

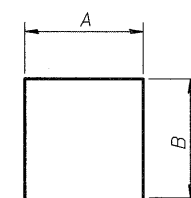


SECTION D-D



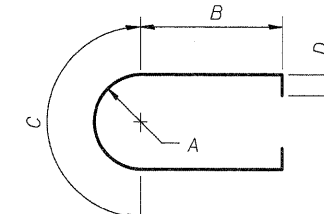
**BARS
A, B & C DIMENSIONS**

Bar	A	B	C
n20(E)	1'-7"	55'-0"	1'-2 3/4"
n21(E)	1'-7"	49'-9"	1'-2 3/4"
n25(E)	1'-7"	57'-6"	1'-2 3/4"
v23	1'-7"	31'-0"	1'-2 3/4"
v24	1'-7"	56'-0"	1'-2 3/4"
v25	1'-7"	56'-0"	1'-2 3/4"
v26	1'-7"	53'-6"	1'-2 3/4"



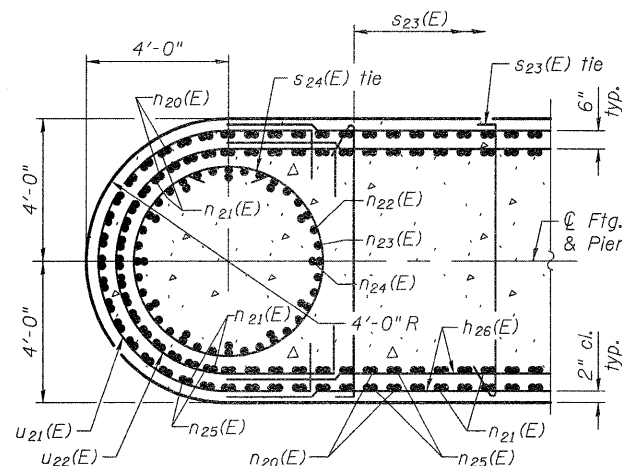
**BARS
A & B DIMENSIONS**

Bar	A	B
s21(E)	3'-6"	7'-8"
s22(E)	4'-1"	7'-8"
s25(E)	8'-2"	2'-6"
t20(E)	29'-8"	2'-0"
t21(E)	29'-8"	1'-4"
t22(E)	29'-8"	2'-0"
u20(E)	8'-1"	6'-0"

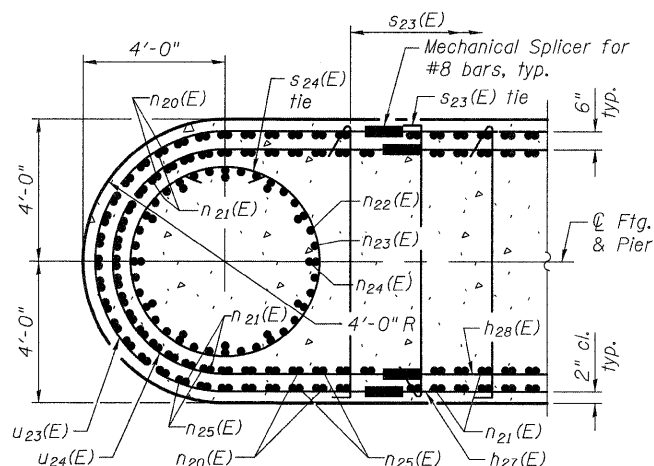


**BARS
A, B, C & D DIMENSIONS**

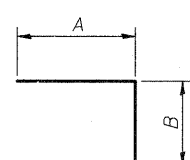
Bar	A	B	C	D
u21(E)	3'-10"	4'-8"	12'-0"	1'-4"
u22(E)	3'-4"	5'-5"	10'-6"	1'-4"
u23(E)	3'-10"	4'-6"	12'-0"	-
u24(E)	3'-4"	5'-0"	10'-6"	-



SECTION E-E

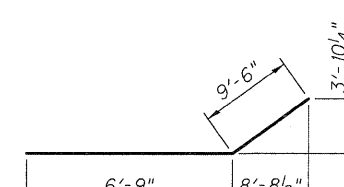


SECTION F-F

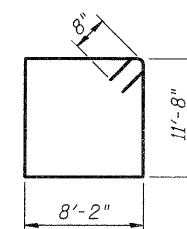


**BARS
A & B DIMENSIONS**

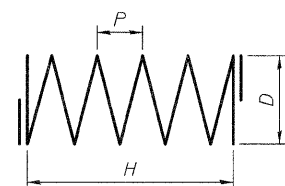
Bar	A	B
p21(E)	21'-10"	2'-0"
w23(E)	1'-4"	9'-7"
w24(E)	4'-0"	9'-7"



BAR p23(E)



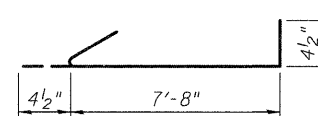
BAR s20(E)



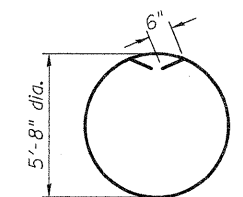
**SPIRALS
H, D & P DIMENSIONS**

Bar	H	D	P	L*
sp20	35'-0"	5'-2"	3"	2,322'
sp22	56'-0"	5'-2"	6"	1,867'

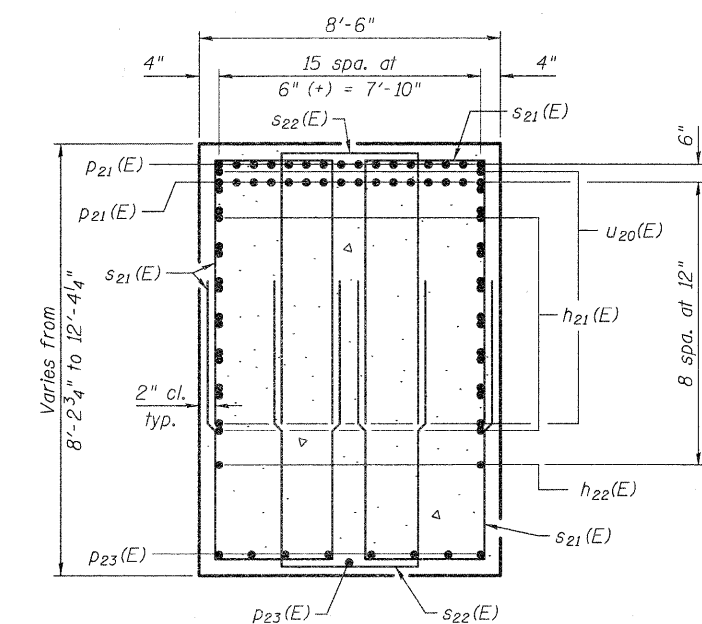
* Length calculated as continuous bar (ignoring splices).



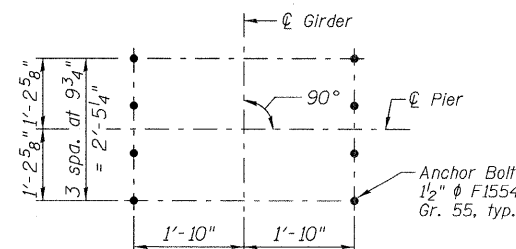
BAR s23(E)



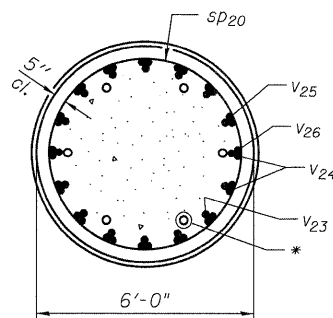
BAR s24(E)



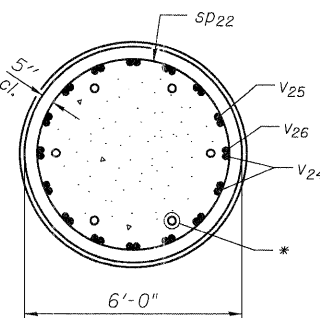
SECTION B-B



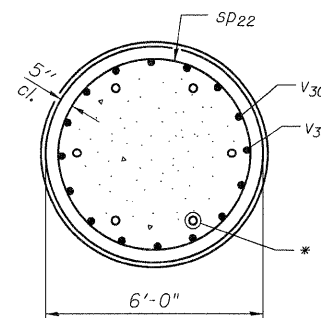
TYPICAL ANCHOR BOLT LAYOUT



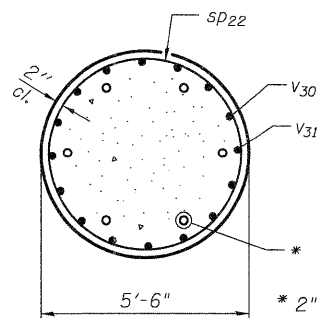
SECTION G-G



SECTION H-H



SECTION I-I



SECTION J-J

* 2" I.D. Steel Pipe for Crosshole Sonic Logging, typ. (6 each shaft)

cs:\pwworking\omg\0549104\0600345-76A91-097-PRD.dgn

4/20/2011 4:49:16 PM



USER NAME = jimgus	DESIGNED - MG	REVISED - LGP 4/20/2011
FILE NAME = 0600345-76A91-097-PRD.DGN	CHECKED - PJC	REVISED -
PLOT SCALE = NONE	DRAWN - JM	REVISED -
PLOT DATE = 3/18/2011	CHECKED - BSK	REVISED -

**STATE OF ILLINOIS
DEPARTMENT OF TRANSPORTATION**

**PIER 3 - SECTIONS & BILL OF MATERIAL
STRUCTURE NO. 060-0345**

BRIDGE SHEET NO. 97 OF 133 SHEETS

F.A.I. RTE.	SECTION	COUNTY	TOTAL SHEETS	SHEET NO.
270	60-1B-1	MADISON	712	476
				CONTRACT NO. 76A91
ILLINOIS FED. AID PROJECT				