

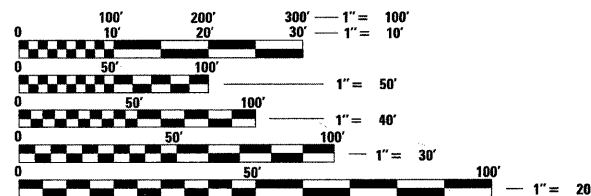
F.A.I. RTE.	SECTION	COUNTY	TOTAL SHEETS	SHEET NO.
270	60B-1-8	MADISON	49	1
		ILLINOIS	CONTRACT NO. 76A92	

### INDEX OF SHEETS

- 1 COVER SHEET
- 2 GENERAL NOTES
- 3 SUMMARY OF QUANTITIES
- 4 GUARDRAIL REPAIR
- 5 TRAFFIC CONTROL PLAN - TYPICAL SECTIONS
- 6 LANE CLOSURES SCHEDULE
- 7 TRAFFIC CONTROL PLAN - STAGE 1-1
- 8 TRAFFIC CONTROL PLAN - STAGE 1-2
- 9 TRAFFIC CONTROL PLAN - STAGE 1-3
- 10 TRAFFIC CONTROL PLAN - STAGE 2-1
- 11 TRAFFIC CONTROL PLAN - STAGE 2-2
- 12 TRAFFIC CONTROL PLAN - STAGE 2-3
- 13 CHANGEABLE MESSAGE SIGN PLAN

14-49 STRUCTURAL PLANS  
**49A-49H EXISTING STRUCTURE PLANS**  
**HIGHWAY STANDARDS**

- 606001-04 CONCRETE CURB TYPE B AND COMBINATION CONCRETE CURB AND GUTTER
- 630001-09 STEEL PLATE BEAM GUARDRAIL
- 631033-04 TRAFFIC BARRIER TERMINAL, TYPE 6B
- 631046-04 TRAFFIC BARRIER TERMINAL, TYPE 10
- 635006-03 REFLECTOR AND TERMINAL MARKER PLACEMENT
- 635011-02 REFLECTOR MARKER AND MOUNTING DETAILS
- 701400-05 APPROACH TO LANE CLOSURE, FREEWAY/EXPRESSWAY
- 701401-06 LANE CLOSURE FREEWAY/EXPRESSWAY
- 701411-07 LANE CLOSURE MULTILANE AT ENTRANCE OR EXIST RAMP FOR SPEEDS > 45 MPH
- 701901-01 TRAFFIC CONTROL DEVICES
- 720011-01 METAL POSTS FOR SIGNS, MARKERS & DELINEATORS
- 728001-01 TELESCOPING STEEL SIGN SUPPORT
- 729001-01 APPLICATIONS OF TYPES A&B METAL POSTS (FOR SIGNS & MARKERS)
- 780001-02 TYPICAL PAVEMENT MARKINGS



FULL SIZE PLANS HAVE BEEN PREPARED USING STANDARD ENGINEERING SCALES. REDUCED SIZED PLANS WILL NOT CONFORM TO STANDARD SCALES. IN MAKING MEASUREMENTS ON REDUCED PLANS, THE ABOVE SCALES MAY BE USED.

J.U.L.I.E.  
 JOINT UTILITY LOCATION INFORMATION FOR EXCAVATION  
 1-800-892-0123  
 OR 811

# STATE OF ILLINOIS

## DEPARTMENT OF TRANSPORTATION

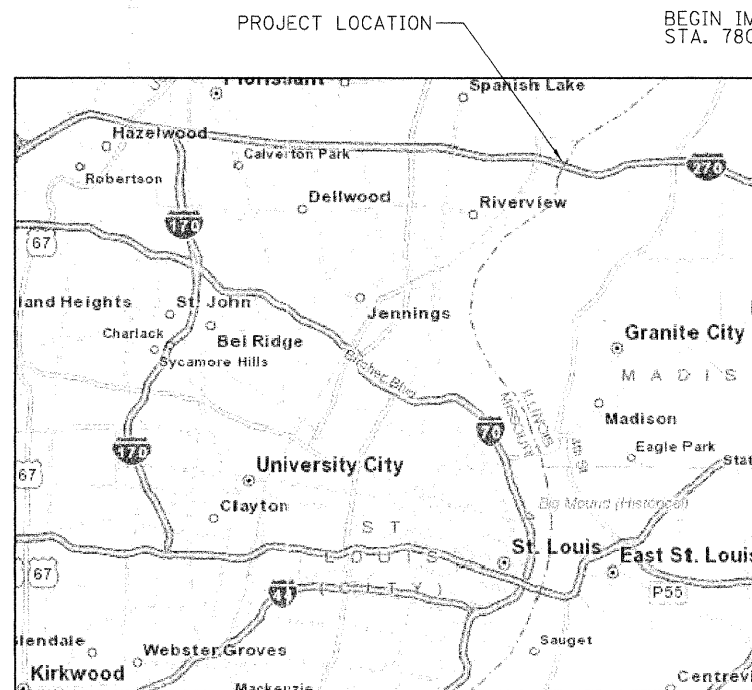
### DIVISION OF HIGHWAYS

# PROPOSED HIGHWAY PLANS

## FAI ROUTE 270 (I-270) SECTION 60 B-1-8

### REHABILITATION OF BRIDGE OVER MISSISSIPPI RIVER MADISON COUNTY

C-98-069-07

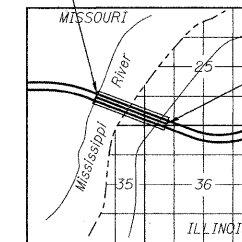


**LOCATION MAP**

(NOT TO SCALE)  
 GROSS LENGTH = 5411 FT. = 1.02 MILES  
 NET LENGTH = 5411 FT. = 1.02 MILES

BEGIN IMPROVEMENTS  
 STA. 780+00.25

END IMPROVEMENTS  
 STA. 834+11.25



**LOCATION SKETCH**



*Ricardo A. Mantay Jr.*  
 SIGNATURE

3/23/2011  
 DATE

LICENSE EXPIRES 11-30-2011

STATE OF ILLINOIS  
 DEPARTMENT OF TRANSPORTATION  
 DIVISION OF HIGHWAYS

SUBMITTED March 24 20 11

*Mary C. Jame*  
 DEPUTY DIRECTOR OF HIGHWAYS, REGION ENGINEER

May 13 20 11

*Scott E. Stitt, P.E.*  
 acting ENGINEER OF DESIGN AND ENVIRONMENT

May 13 20 11

*Christina M. Rosol*  
 DIRECTOR OF HIGHWAYS, CHIEF ENGINEER

PROJECT ENGINEER - PATTI LeBEAU, P.E. (618) 346-3179  
 PROJECT MANAGER - ART MUEHLFELD (618) 346-3209

CONTRACT NO. 76A92

△ REVISED 6-6-11



**PARSONS**  
 400 WOODS MILL RD. SOUTH, SUITE 330  
 CHESTERFIELD, MO. 63017  
 PHONE: 314-434-2900

**PRINTED BY THE AUTHORITY  
 OF THE STATE OF ILLINOIS**