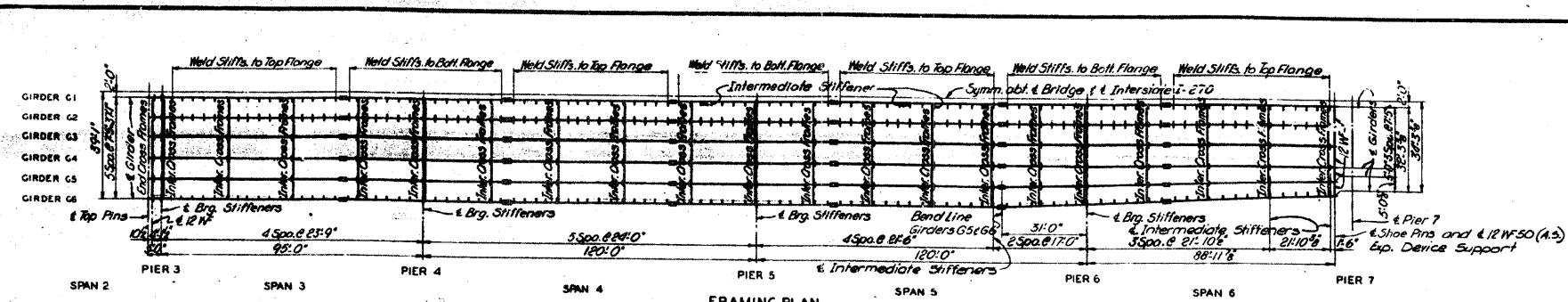
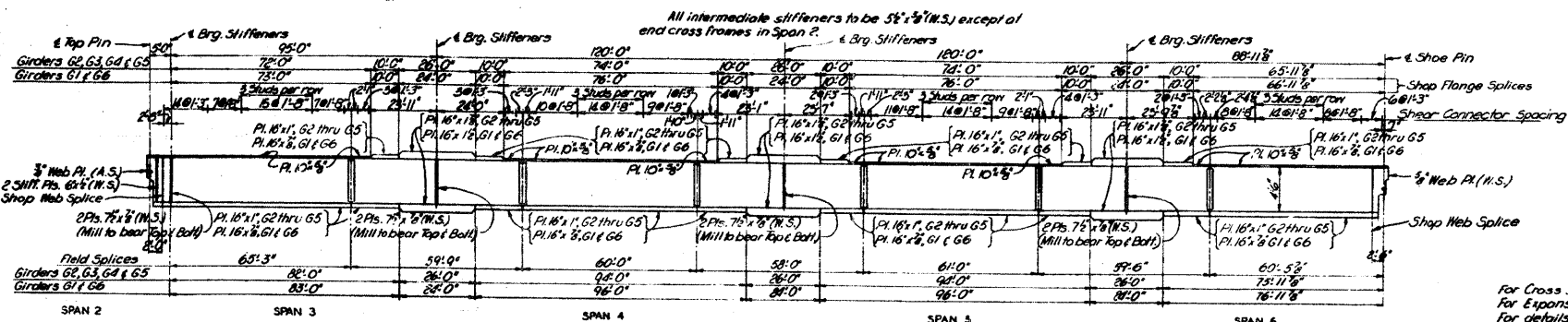


FED. ROAD DIST. NO.	STATE	REL. AID PROJ. NO.	PROJECT TYPE	SHEET NO.	TOTAL SHEETS
7	ILL.	1-270-5	19	34E	



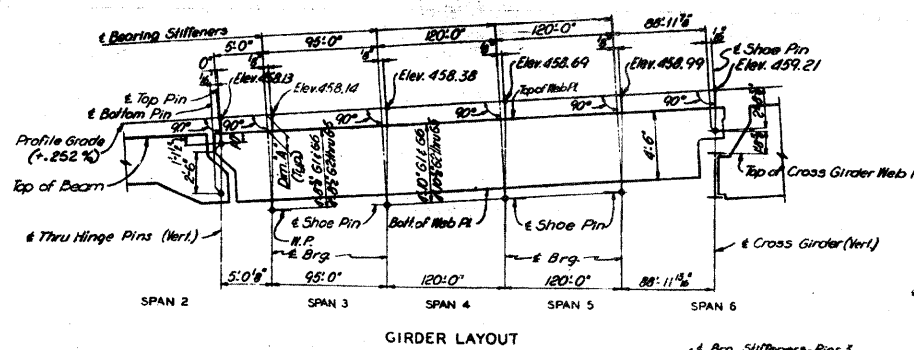
Note: Location of intermediate stiffeners for Girders G3, G4 & G5 same as shown for G2.



Note: Flange field splice pites not shown.

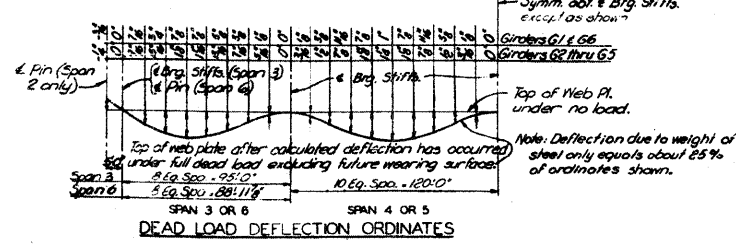
Note: For shear connectors use 4 studs per row unless otherwise noted.

NOTES
For Cross Sections and Girder Details see Sheet 8.
For Expansion Devices, see Sheets 23 & 24.
For details of shoes, see Sheet 9.
For Hinge Details and Wind Transfer Device, see Sheet 22.



GIRDER DIM. #	ELEVATIONS OF SHOE PINS OR W.P.			
	PIER 3	PIER 4	PIER 5	PIER 6
G1	452.70	452.80	453.10	453.21
G2	452.61	452.70	453.00	453.30
G3	452.53	452.61	452.92	453.22
G4	452.46	452.54	452.84	453.15
G5	452.37	452.46	452.76	453.06
G6	452.31	452.42	452.72	453.02

Note: Dimension # is true only at Brg. Stiffeners or Pins. At other points the dead load deflection must be added.



BRIDGE OVER MISSISSIPPI RIVER
AT CHAIN OF ROCKS
PROJECT 1-270-5
ROUTE 1-270
ST. LOUIS, MO.-MADISON CO., ILL.
GIRDER FRAMING PLAN - SPANS 3 TO 6

OVERDRUP & PANCEL AND ASSOCIATES, INC.
ENGINEERS-ARCHITECTS
ST. LOUIS, MO.
65777

NOTE: DO NOT SCALE THIS DRAWING. FOLLOW DIMENSIONS.

SHEET 6 OF 37

MO. A-990

FOR INFORMATION ONLY

FILE NAME =	USER NAME = challandecke	DESIGNED -	REVISED -	STATE OF ILLINOIS DEPARTMENT OF TRANSPORTATION	EXISTING STRUCTURE PLANS	F.A.I. RTE. 270	SECTION 60B-I-8	COUNTY MADISON	TOTAL SHEETS 49	SHEET NO. 49	
PROJECT SCALE = 5/8" = 1'-0"	PLOT SCALE = 5/8" = 1'-0"	DRAWN -	REVISED -			SCALE: NONE	SHEET NO. OF SHEETS	STA. TO STA.	FED. ROAD DIST. NO. ILLINOIS	FED. AID PROJECT	CONTRACT NO. 76A92
PLOT DATE = 5/31/2011	DATE	CHECKED -	REVISED -								
		DATE	REVISED -								

△ SHEET ADDED 6-6-11