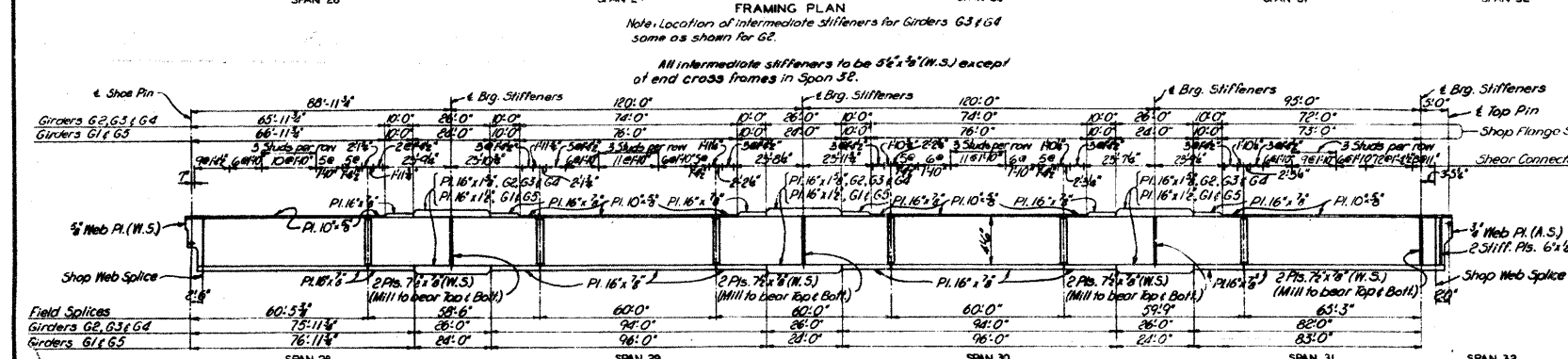
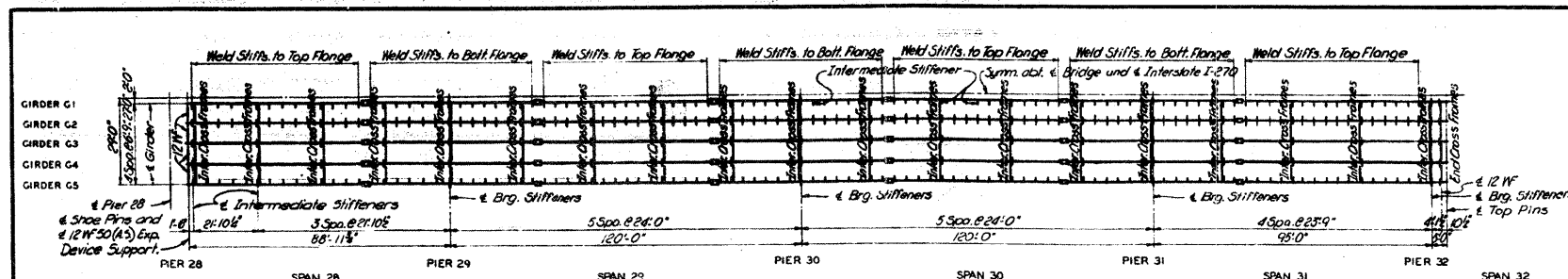


DES. NO.	DATE	BY	CHECKED	TOTAL SHEETS
7	11-27-8	ML		34F



NOTES
 For Cross Sections and Girder Details, see Sheet 8.
 For Expansion Devices, see Sheets 23 & 24.
 For details of shoes, see Sheet 2.
 For Hinge Details and Wind Transfer Device see Sheet 22.

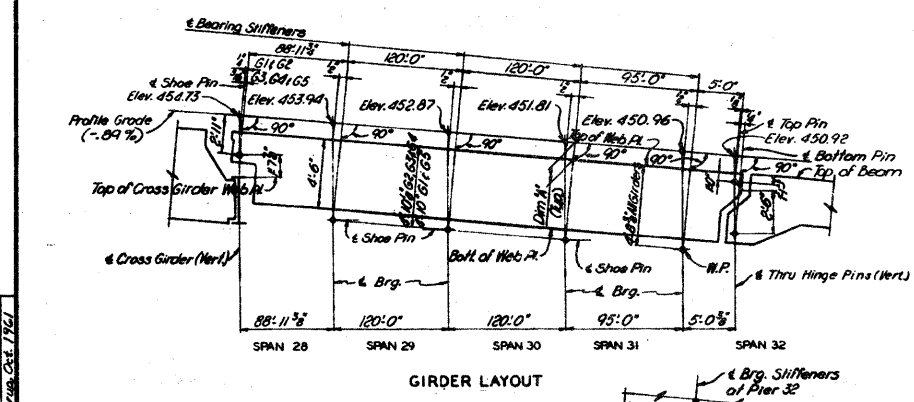
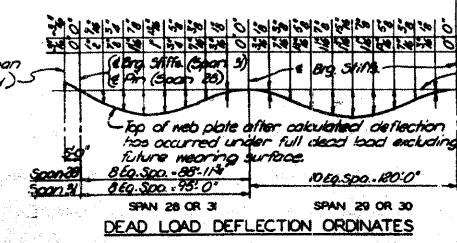


TABLE OF VARIABLES

GIRDER DIM. W.	ELEVATIONS OF SHOE PINS OR W.			
	PIER 29	PIER 30	PIER 31	PIER 32
G1 9"	448.36	447.99	448.22	445.37
G2 9"	448.21	447.84	448.07	445.22
G3 10"	448.20	447.83	448.06	445.21
G4 11"	448.14	447.77	448.00	445.15
G5 10"	448.08	447.71	447.94	445.09

Note: Dimension "a" is true only at Brg. Stiffeners or Pin. At other points the dead load deflection must be added.



BRIDGE OVER MISSISSIPPI RIVER
 AT CHAIN OF ROCKS
 PROJECT 1-270-S
 ROUTE 1-270
 ST. LOUIS, MO.-MADISON CO. ILL.
 GIRDER FRAMING PLAN-
 SPANS 28 TO 31

DRAWN BY: F. P. HARRIS, M.S.C.E. (1961)
 CHECKED BY: C. W. HARRIS, M.S.C.E. (1961)
 1984
 125173

SPENDRUP & PARCEL, AND ASSOCIATES, INC.
 ENGINEERS-ARCHITECTS
 ST. LOUIS, MO.

NOTE: DO NOT SCALE THIS DRAWING. FOLLOW DIMENSIONS.

SHEET 7 OF 37

MO. A-990

FOR INFORMATION ONLY

△ SHEET ADDED 6-6-11

FILE NAME =	USER NAME = chollandeske	DESIGNED -	REVISED -	STATE OF ILLINOIS DEPARTMENT OF TRANSPORTATION	EXISTING STRUCTURE PLANS	F.A.I. RTE.	SECTION	COUNTY	TOTAL SHEETS	SHEET NO.
cr:\pw\work\p\dot\chollandeske\d015\824	microfil\sheet.dgn	DRAWN -	REVISED -			270	608-1-8	MADISON	49	49c
PLOT SCALE = 5/8"=1'-0"		CHECKED -	REVISED -			CONTRACT NO. 76A92				
PLOT DATE = 5/31/2011		DATE -	REVISED -			ILLINOIS FED. AID PROJECT				