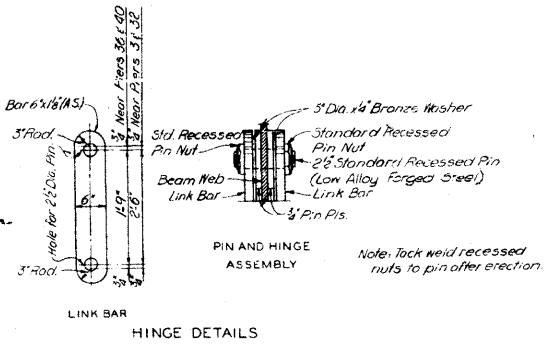
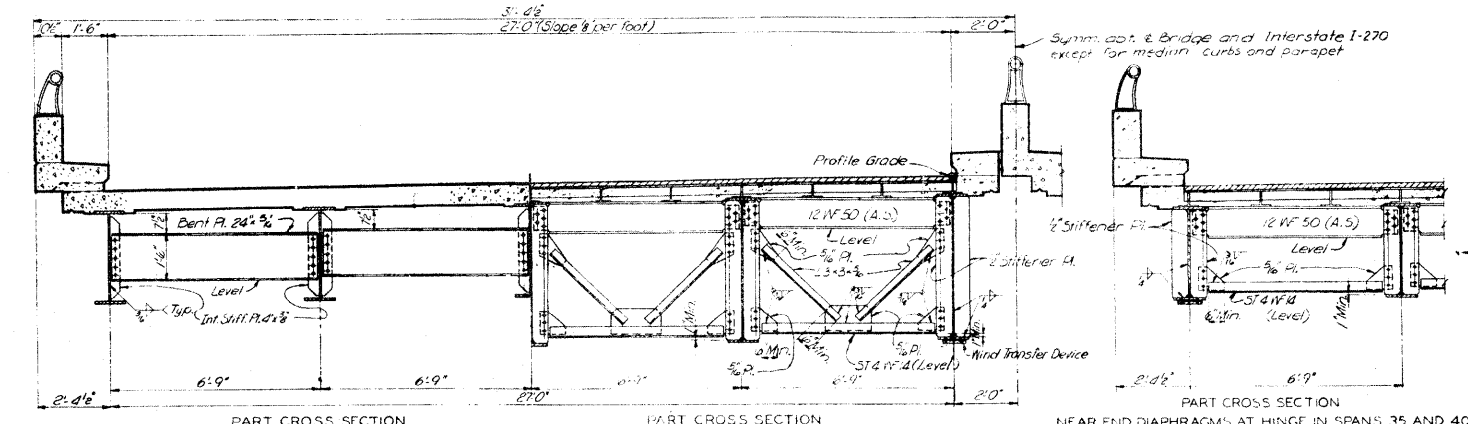
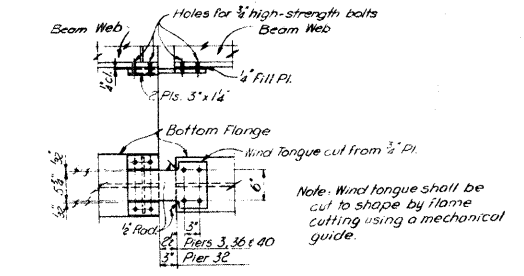
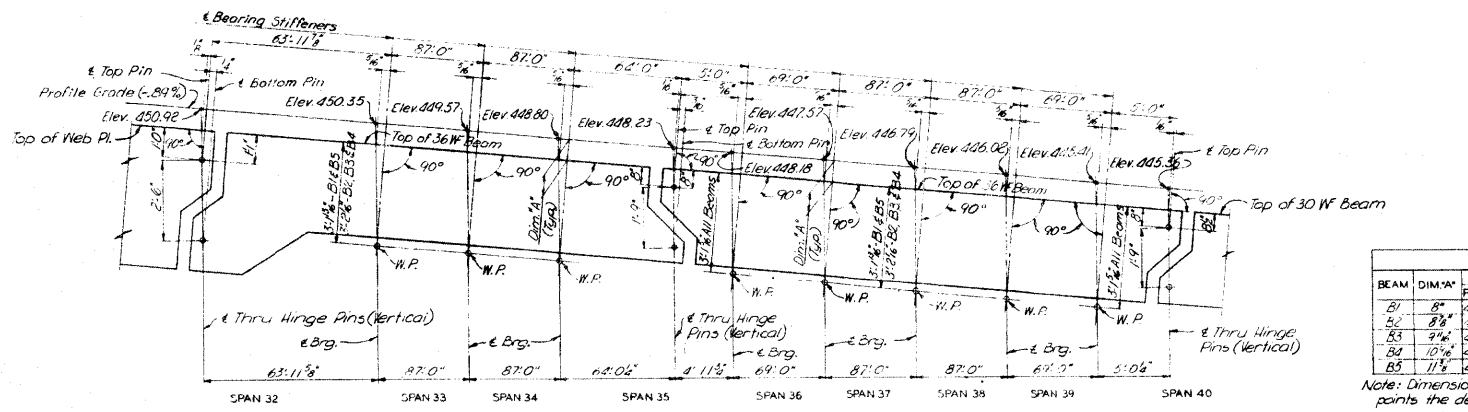


FED. ROAD DIST. NO.	STATE	PROJ. NO.	FISCAL YEAR	SHEET NO.	TOTAL SHEETS
7	IL		19	34	41



PART CROSS SECTION NEAR INTERMEDIATE DIAPHRAGMS NEAR CROSS FRAMES AT HINGE IN SPAN 32
 Intermediate diaphragms of piers same except for bearing stiffeners. See Sheet 21 for detail of bearing stiffener.
 Note: Connect diaphragms with 1/2\"/>

ROADWAY CROSS SECTION SPANS 32 THRU 39



WIND TRANSFER DEVICE
 Note: Wind Transfer Device of Piers 32, 36 and 40 to be on Beams B1 & B5 only. At Pier 3 on Beams B1 & B5 only.
 Wind Transfer Device shown in normal position at 60° F.

TABLE OF VARIABLES		ELEVATIONS OF WORKING POINT							
BEAM	DIM. IN'	PIER 33	PIER 34	PIER 35	PIER 36	PIER 37	PIER 38	PIER 39	PIER 40
B1	8'	446.53	447.75	448.98	449.40	449.75	449.97	449.20	449.63
B2	8'	446.43	447.66	448.88	449.33	449.66	449.88	449.11	449.55
B3	9'	446.56	447.55	448.81	449.26	449.58	449.81	449.03	449.48
B4	10'	446.30	447.52	448.75	449.20	449.52	449.75	448.97	449.42
B5	11'	446.24	447.47	448.70	449.12	449.47	449.69	448.92	449.35

Note: Dimension A is true only at 6\"/>

BRIDGE OVER MISSISSIPPI RIVER AT CHAIN OF ROCKS
 PROJECT 1-270-S(72) 242
 ROUTE 1-270
 ST. LOUIS, MO.—MADISON CO., ILL.
 BEAM DETAILS—SPANS 32 TO 39

NOTE: DO NOT SCALE THIS DRAWING. FOLLOW DIMENSIONS.

SHEET 22 OF 37

MO. A-890

FOR INFORMATION ONLY

▲ SHEET ADDED 6-6-11

FILE NAME =	USER NAME = challandske	DESIGNED -	REVISED -	STATE OF ILLINOIS DEPARTMENT OF TRANSPORTATION	EXISTING STRUCTURE PLANS	F.A.I. RTE.	SECTION	COUNTY	TOTAL SHEETS	SHEET NO.	
os:\p\work\p\dot\challandske\d0159504	microfilm\sheet.dgn	DRAWN -	REVISED -			270	60B-1-8	MADISON	49	49H	
PLOT SCALE = 50.0000 1/16"		CHECKED -	REVISED -			SCALE: NONE		SHEET NO. OF SHEETS STA. TO STA.		CONTRACT NO. 76A92	
PLOT DATE = 5/31/2011		DATE -	REVISED -			SHEET NO. OF SHEETS STA. TO STA.		FED. ROAD DIST. NO. ILLINOIS FED. AID PROJECT			