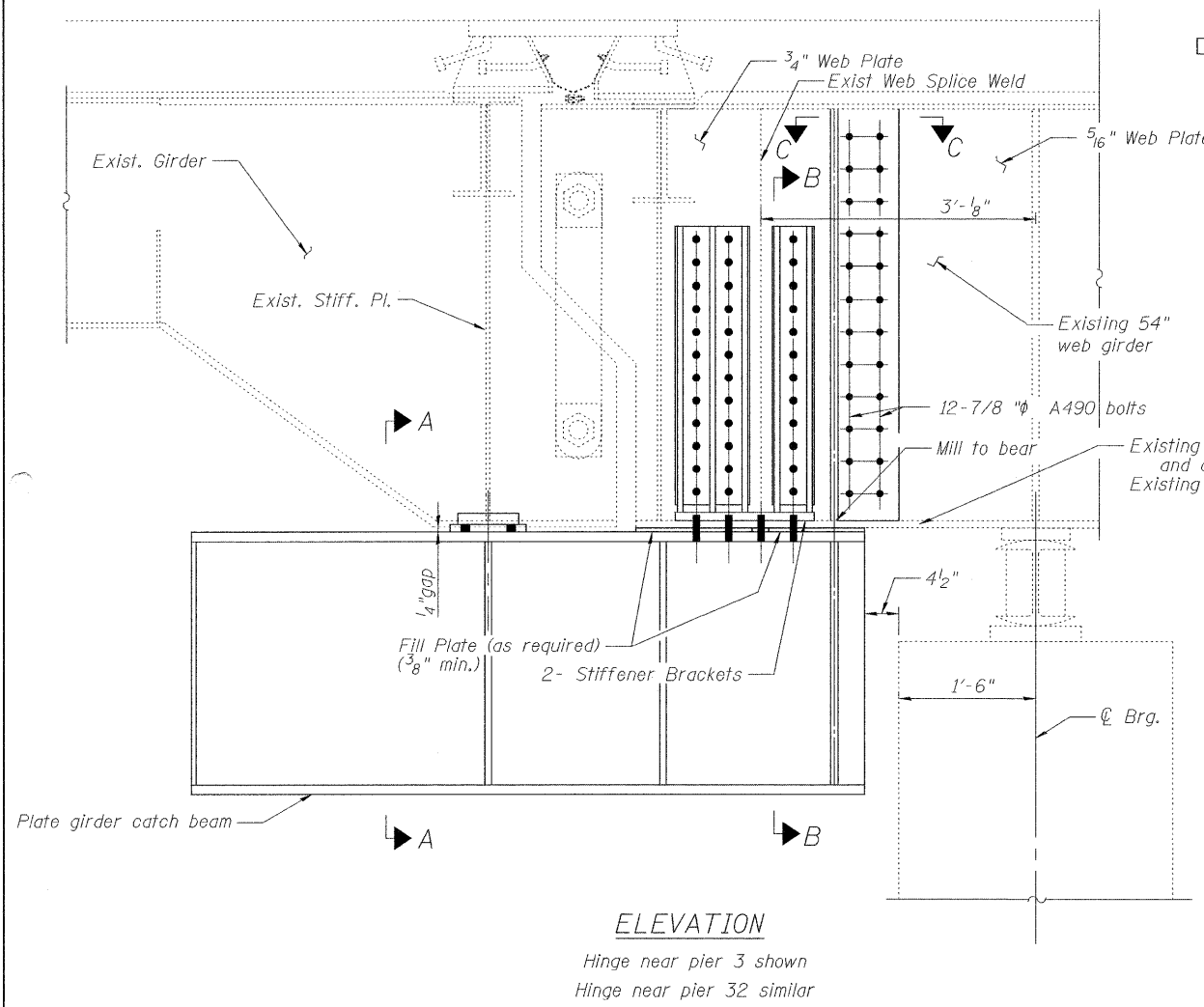


STATE OF ILLINOIS
DEPARTMENT OF TRANSPORTATION

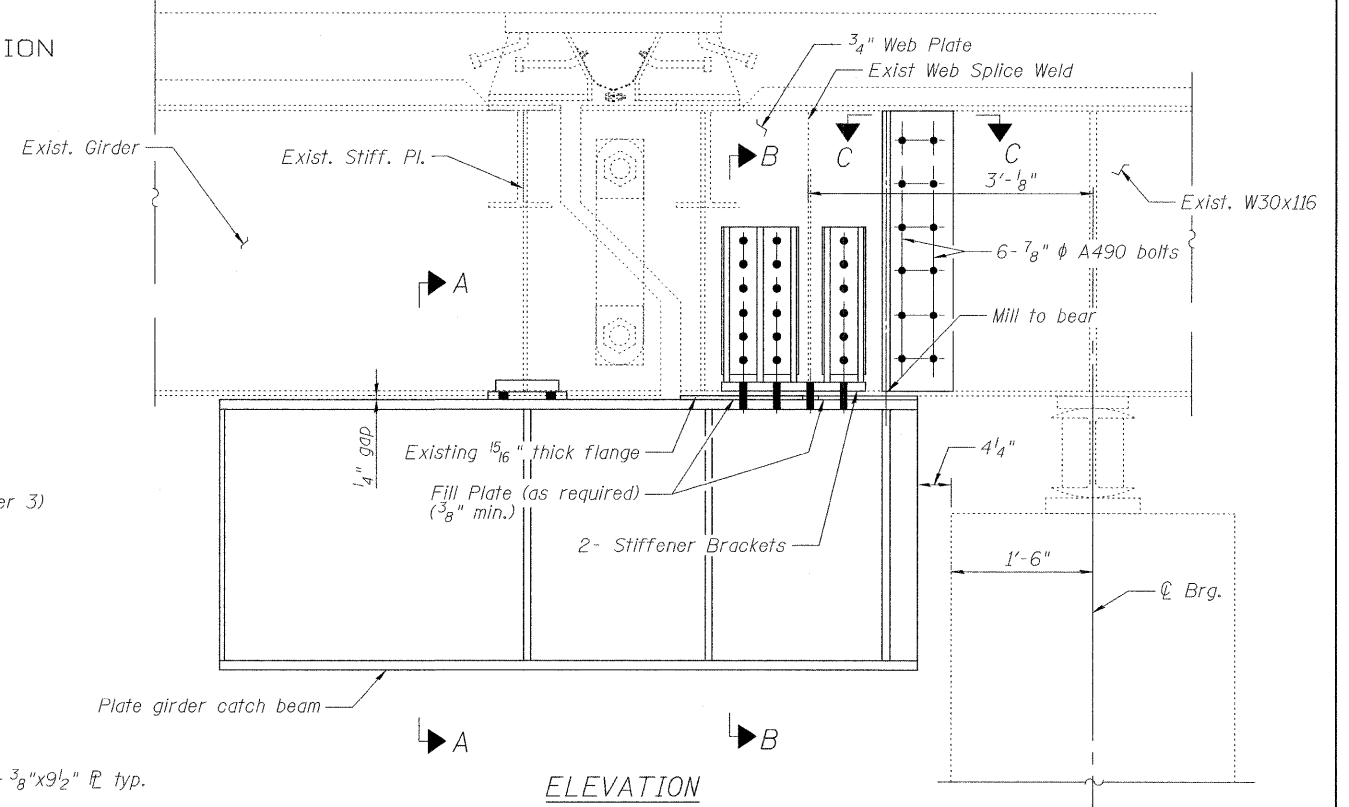
General Notes

Designed for 2007 AASHTO LRFD
Strength I Limit State
Design truck = HL-93
Catch beams and corresponding
connections are not designed for fatigue.



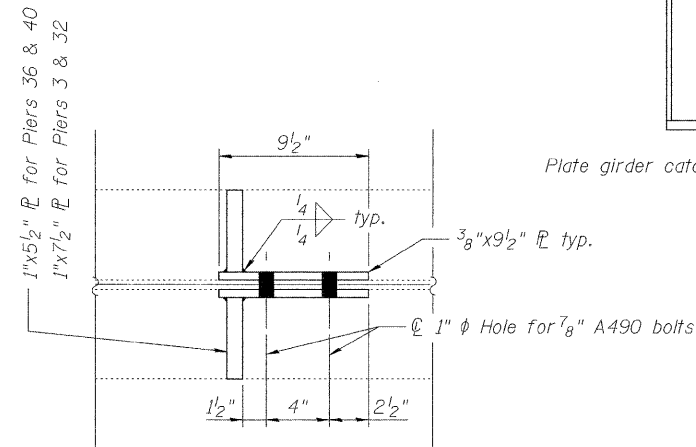
ELEVATION

Hinge near pier 3 shown
Hinge near pier 32 similar

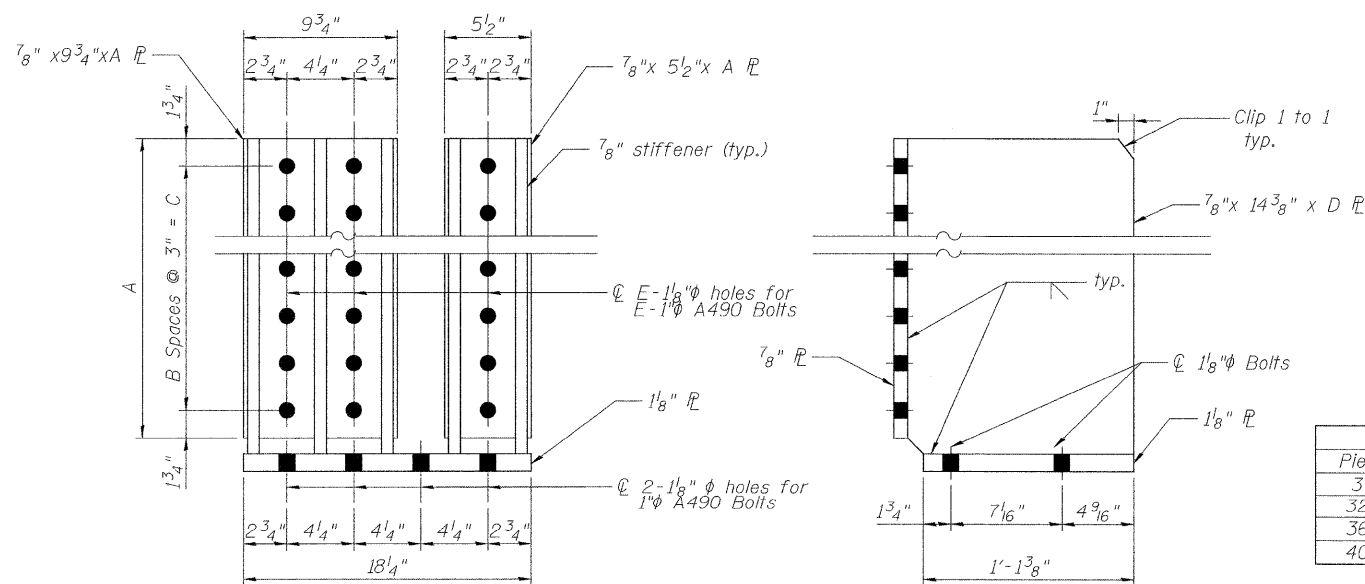


ELEVATION

Hinge near pier 36 shown
Hinge near pier 40 similar



SECTION C-C



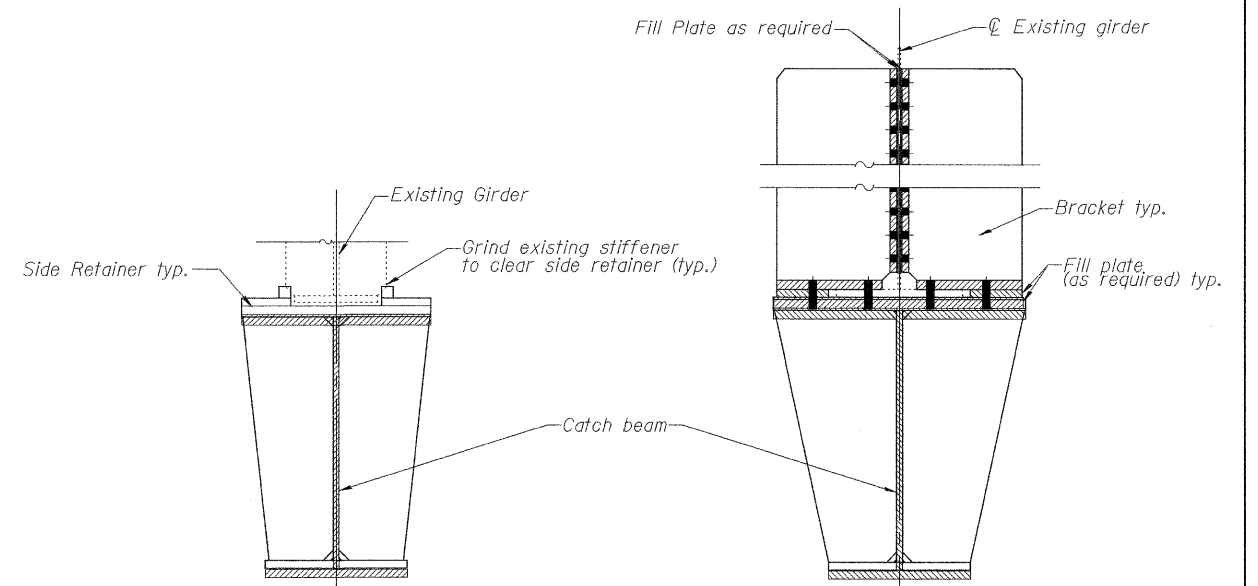
STIFFENER BRACKET

TYPICAL SECTION THRU
BRACKET

| BRACKET DIMENSIONS | | | | | |
|--------------------|---------|----|-----|---------|----|
| Pier | A | B | C | D | E |
| 3 | 36 1/2" | 11 | 33" | 37 1/2" | 12 |
| 32 | 36 1/2" | 11 | 33" | 37 1/2" | 12 |
| 36 | 18 1/2" | 5 | 15" | 19 1/2" | 6 |
| 40 | 18 1/2" | 5 | 15" | 19 1/2" | 6 |

BILL OF MATERIAL

| Item | Unit | Total |
|---|-------|---------|
| Furnishing and Erecting Structural Steel | Pound | 194,200 |



SECTION A-A

All locations

SECTION B-B

Connection near pier 36 and 40 shown
Connection near pier 3 and 32 similar

CATCH BEAM DETAILS - 1
STRUCTURE NO. 060-0035

| | |
|----------|-----------|
| DESIGNED | TMB |
| CHECKED | TSB |
| DRAWN | JGC / TMB |
| CHECKED | TSB |



Note:

1. Remove existing wind transfer device as needed.
2. All bolts, nuts and washer shall be ASTM A490.
3. For catch beam details see sheet 22 of 36.
4. For Side Retainer details see sheet 22 of 36.

| | | | | | |
|---|-------------|---------|---------|--------------|-----------|
| SHEET NO. 21 36 SHEETS | F.A.I. RTE. | SECTION | COUNTY | TOTAL SHEETS | SHEET NO. |
| | 270 | 60B-I-8 | MADISON | 49 | 34 |
| CONTRACT NO. 76A92 | | | | | |
| FED. ROAD DIST. NO. 8 ILLINOIS FED. AID PROJECT | | | | | |